



TIG 200 DC PULSE PFC

Range marks a significant advancement in welding technology by offering MCU control system, large LCD display, superior performance, high duty cycle, efficiency, and versatility in a compact and user-friendly package. This range is suitable for professional welding purpose, highly quality welding job and heavy duty industry.

Power Factor Correction (PFC)/Multi Input Voltage/Precise Settings/2T,4T/Fan on demand/Lift Tig/Pulsed Tig/AC Tig/DC Tig/Foot remote control/Hand remote control make TIG200 DC PULSE PFC popular choices among welders looking for efficiency, portability, and enhanced welding performance in various applications.

Machine Features



Portability

It is 9 kgs, it is typically smaller, lighter, and more compact than traditional welding machines, making them easier to transport and maneuver.



Lift Tig

Allows welders to perform both stick(SMAW) welding and TIG(G-TAW) welding using the same machine.



Pulsed Tig

It allows for controlled cycles of higher peak current and lower background current. This results in less overall heat input into the workpiece compared to continuous current TIG welding. As a result, it helps minimize distortion, improved control, better fusion, reduced spatter and enhanced welding speed.



2T/4T

Both 2T and 4T modes improve welding efficiency by automating aspects of the welding process, reducing the need for manual intervention and streamlining workflow.



Foot remote control

It can improve the comfort and ergonomics of the welding process. Welders can maintain a stable and comfortable position while adjusting welding parameters with their foot, reducing fatigue and enhancing overall welding performance.



Hand remote control

It allows welders to adjust welding parameters (such as amperage) without interrupting the welding process. This hands-free operation improves workflow efficiency and reduces the likelihood of weld defects caused by manual adjustments during welding.



Fan on demand

Provides energy efficiency, reduced noise level and improved reliability.



Machine details:

TIG Single Regulator

Gas Hose

Durable gas hose with gas fittings



TIG 26-Torch

TIG26 torch is larger and more robust. It usually has a larger handle and nozzle, designed for heavier-duty welding tasks.. It is often used in industries like construction and heavy fabrication where larger welds and more robust equipment are required.



Welding cable and electrode holder

Welding cables are flexible, highly quality insulation and heavy-duty cables designed to carry the electric current from the power source to the electrode holder and ultimately to the workpiece. High insulation, jaw mechanism and heat resistance ensure efficient welding operation and electrode performance. Cable section can be selected from 6mm² to 120mm². Color of PVC jacket can be customized. Electrode holder types can be customized.



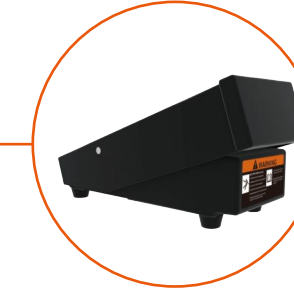
Earth cable and earth clamp

Earth cable and earth clamp play critical roles in electrical safety by providing reliable grounding connections to protect personnel, equipment and facilities from electrical hazards and ensure proper functioning of electrical and welding system. Cable section can be selected from 6mm² to 120mm². Color of PVC jacket can be customized. Earth clamp types can be customized.



Wireless Hand Remote Control

It communicates wirelessly with 2.4G. Rechargeable lithium battery to support extended use during shifts. It enhances operational efficiency, safety and flexibility across various industrial. It can be equipped with all TIG models with LCD display version.



Wireless Foot Control

It communicates wirelessly with 2.4G. Rechargeable lithium battery to support extended use during shifts. Comfortable pedal design makes ease of use. Durable material to ensure longevity and reliability. The max. remote control distance can be up to 20m.



Foot Remote Control

Foot remote control can withstand rugged industrial environments. It is constructed from durable metal, it provides hands-free operation and precision control.

Reliability



275Volts tested in production



Moisture proof
Salt Spray proof
Corrosion proof



Over heat protection



Over voltage protection



Over current protection

Machine function

- 1 Phase** Single phase
- DC** Direct current
- CC** Constant current
- VRD Safe** Voltage Reduction Device
- LCD Display** LCD Display
- GLOBAL VOLTAGE** Global Voltage
- PROTE 275** 275Volts tested in production
- Generator Friendly**
- MCU Control System**
- 3 PROOF** Moisture proof
Salt Spray proof
Corrosion proof



Front view



Side view

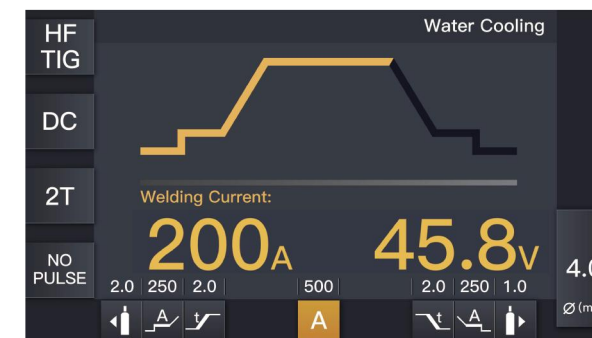


Rear view



Features

- 3.5 " LCD display for all welding settings display.
- Welding mode button for selections of HF TIG, Lift TIG, Stick.
- Exchange button for 2T/4T.
- Exchange button for Pulse and Non Pulse.
- SAVE JOB button for saving or open welding settings.
- ·L: In HF TIG/ Lift TIG, press it to select Pre-gas time, Pre current and Up slope time; In Spot welding mode, press it to select Pre-gas time; In JOB program, press it to load the parameter settings for the select number.
- ·R: In HF TIG/ Lift TIG, press it to select Down slope time, Post current and Post-gas time; In Spot welding mode, press it to select Post-gas time; In JOB program, press it to delete the parameter settings for the select number.
- Setting buttons: Press it to select Languages/ Units/ Information/ Factory reset setting.
- Tungsten diameter: Press it to select tungsten diameter, Press R functional button to confirm.
- Cooling mode selecting button: Press it to select Air cooling or Water cooling.



The control pad for DC TIG Multi Spot mode (constant welding automatically)

Welding data setting includes 2T/4T, welding current, welding voltage, pre gas, post gas, welding time, intermittence time, tungsten diameter (air cooling or water cooling)

Control Panel



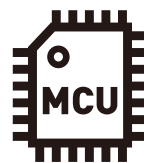
Power Factor Correction (PFC)

Comes with 0.99 Power factor, this allows for improvement of power efficiency, stable voltage input, compliance with power supply standards and optimized use of power supply capacity. It is more energy-efficient, converting more of the input power into usable welding energy, which can result in lower operating costs.



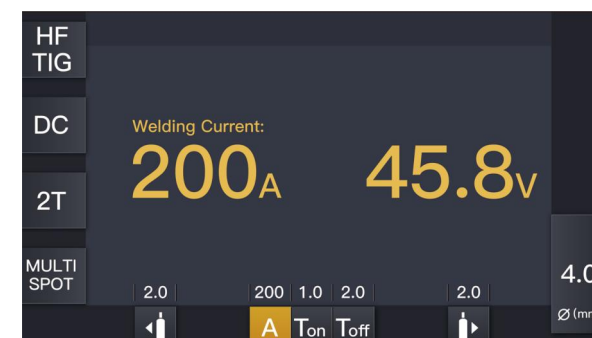
Multi Input Voltage

90-275V wide input voltage operates over a wider range of input voltages, which is beneficial in various working conditions and locations.



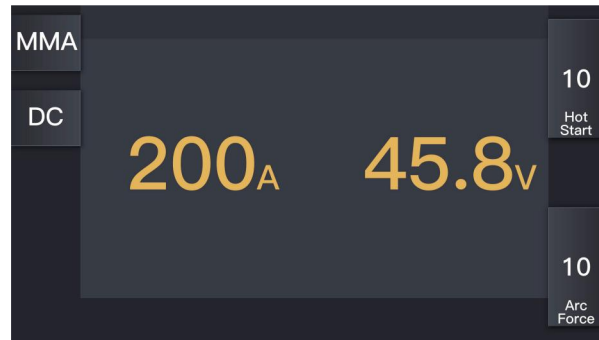
Precise Settings

LCD display offers more precise control over welding parameters such as amperage and arc characteristics, allowing for better adaptation to different materials and thicknesses.



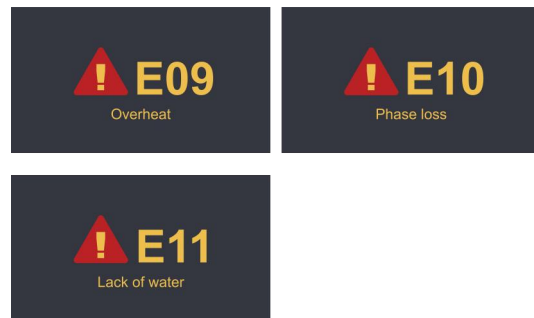
The control pad for DC TIG model

Welding data setting includes 2T/4T, welding current, welding voltage, pre gas, upslope current, upslope time, down slope time, down slope current, tungsten diameter, cooling type (air cooling or water cooling)



The control pad for Stick mode

Welding data setting includes welding current, welding voltage, AC Stick, DC stick, hot start and arc force.

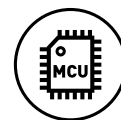


Error codes displayed on LCD screens can vary widely depending on the machine you are referring to. It indicates specific issues or malfunctions that the device has detected.



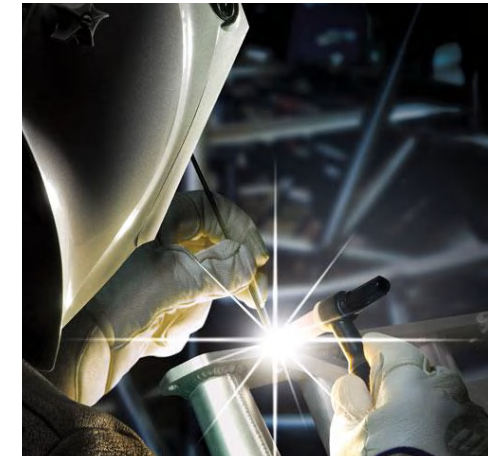
Pulsed Tig

It allows for controlled cycles of higher peak current and lower background current. This results in less overall heat input into the workpiece compared to continuous current TIG welding. As a result, it helps minimize distortion, improved control, better fusion, reduced spatter and enhanced welding speed.



Precise Settings

LCD display offers more precise control over welding parameters such as amperage and arc characteristics, allowing for better adaptation to different materials and thicknesses.



AC Tig

It offers cleaning action, weld penetration, material compatibility, heat control, electrode longevity, weld appearance, and suitability for thin materials. It is suitable for welding a wide range of materials, including aluminum, magnesium, titanium, etc. This makes AC TIG welding versatile in various industries, such as aerospace, automotive, and marine applications.



DC Tig

It offers ease of use, versatility, excellent weld quality, precise penetration control, cost-effectiveness, suitability for thin materials, it can be used to weld a wide range of metals, including stainless steel, carbon steel, nickel alloys, copper, and titanium. It is a preferred choice for a wide range of welding applications in industries such as aerospace, automotive, manufacturing, and construction.



Machine parameters:

Model	TIG200 DC PULSE PFC			
	90-275V 50/60Hz			
Input voltage	1-110V		1-220V	
Process	TIG	MMA	TIG	MMA
Effective current(A)	22.3	23.7	15.1	18.3
Rated input current(A)	23.5	37.5	19.5	29
Rated input power(KW)	2.6	4.1	4.5	6.7
Duty cycle 40°C 10min	60% 150A 100% 125A	60% 110A 100% 85A	60% 200A 100% 155A	60% 165A 100% 130A
Welding current(A)	3-130	10-130	3-200	10-200
No load voltage(V)	70			
Efficiency	85%			
Power factor	0.99			
Insulation class	F			
Protection class	IP21S			
Dimensions(mm)	465*146*278			
Net weight(kg)	9			