

ACCESSORIES / CONSUMABLES / SAFETY CATALOGUE

Welding & Cutting Technology





CONTENTS

ABOUT US

Crepow is welding supplier established in 2009. We are pleased to offer a comprehensive range of MIG welding, TIG welding, MMA welding, Plasma cutting, Welding accessories and Welding consumables. Our objective is to provide the highest quality products, with more features and innovation in global market. In product development, we use the latest technology and service.

Customer first and Quality life are our company principle. We not only have the professional R&D and sales teams, but also are familiar with OEM and ODM cooperation in export business. The products we provide comply with Asian and European quality standards, as well as Rohs standard.

We have CE and CSA certificates, and many products are featuring PFC and EMC, which makes us one step ahead of our competitors.

Constructions, Petrochemical Environments, Shipyards, Heavy and Medium size fabrication are the fields we are proudly serving with our welders, observing the highest standards on terms of local regulations and environmental protection



ACCESSORIES

TIG Torch	4-9
PLASMA Torch	10-17
MIG Torch	18-30
Welding Cable	31
Regulator	32-33
Cable Connector	34-35
Electrode Holder	36-37
Earth Clamp	38
Brass Earth Clamp	39-43
Welding Magnets	44-50
MIG Welding Pliers	51
Hammer/Bursh	52
Chalk Pencil	52
Carry Case	53

CONSUMABLES

Abrasives	54-63
Shear Stud	64-65
Ceramic Ferrules	66-67
Tungsten Electrode	68-71
MIG Wire & TIG Rod	72-73
Solder Product	74-76

SAFETY

PPE Profile	77
Eye and Face Protection Profile	78
Automatic Darkening Helmet	79
Welding Clothing Profile	80
Welding Apron	81
Welding Glove	82-87
Welding Curtains	88-91
Welding Blanket	92-93

OTHERS

Electrode Dryers and Ovens	94-95
----------------------------------	-------

TIG 17

- Type of cooling: Air Cooled
- Rating: 140A DC
100A AC
- Duty cycle: 35%
- Tungsten electrodes: Ø0.5-4.0mm



● TIG 17 & TIG 17V Rigid

Head Style	Cable	Cable Length	Standard
Rigid	1 Piece	4m	TIG 17-4-R RG
		8m	TIG 17-8-R RG
	2 Piece	4m	TIG 17-4-2 RG
		8m	TIG 17-8-2 RG
Rigid + Valve	1 Piece	4m	TIG 17V-4-R RG
		8m	TIG 17V-8-R RG
	2 Piece	4m	TIG 17V-4-2 RG
		8m	TIG 17V-8-2 RG

● TIG 17 & TIG 17V Flex

Head Style	Cable	Cable Length	Standard
Flex	1 Piece	4m	TIG 17-4-R FX
		8m	TIG 17-8-R FX
	2 Piece	4m	TIG 17-4-2 FX
		8m	TIG 17-8-2 FX
Flex + Valve	1 Piece	4m	TIG 17V-4-R FX
		8m	TIG 17V-8-R FX
	2 Piece	4m	TIG 17V-4-2 FX
		8m	TIG 17V-8-2 FX

● TIG 17 Finger Control

Head Style	Cable	Cable Length	Standard
Finger Control	1 Piece	4m	TIG 17-4-R FC
		8m	TIG 17-8-R FC
	2 Piece	4m	TIG 17-4-2 FC
		8m	TIG 17-8-2 FC

TIG 26

- Type of cooling: Air Cooled
- Rating: 180A DC
130A AC
- Duty cycle: 35%
- Tungsten electrodes: Ø0.5-4.0mm

*Technical data based on cable assembly lengths of up to 8.00m.



● TIG 26 & TIG 26V Rigid

Head Style	Cable	Cable Length	Standard
Rigid	1 Piece	4m	TIG 26-4-R RG
		8m	TIG 26-8-R RG
	2 Piece	4m	TIG 26-4-2 RG
		8m	TIG 26-8-2 RG
Rigid + Valve	1 Piece	4m	TIG 26V-4-R RG
		8m	TIG 26V-8-R RG
	2 Piece	4m	TIG 26V-4-2 RG
		8m	TIG 26V-8-2 RG

● TIG 26 & TIG 26V Flex

Head Style	Cable	Cable Length	Standard
Flex	1 Piece	4m	TIG 26-4-R FX
		8m	TIG 26-8-R FX
	2 Piece	4m	TIG 26-4-2 FX
		8m	TIG 26-8-2 FX
Flex + Valve	1 Piece	4m	TIG 26V-4-R FX
		8m	TIG 26V-8-R FX
	2 Piece	4m	TIG 26V-4-2 FX
		8m	TIG 26V-8-2 FX

● TIG 26 Finger Control

Head Style	Cable	Cable Length	Standard
Finger Control	1 Piece	4m	TIG 26-4-R FC
		8m	TIG 26-8-R FC
	2 Piece	4m	TIG 26-4-2 FC
		8m	TIG 26-8-2 FC

TIG 18

- Type of cooling: Water Cooled
- Rating: 320A DC
230A AC
- Duty cycle: 100%
- Tungsten electrodes: Ø0.5-4.0mm



● TIG 18 & TIG 18V Rigid

Head Style	Cable	Cable Length	Standard
Rigid	3 Piece	4m	TIG 18-4
		8m	TIG 18-8
Rigid + Valve	3 Piece	4m	TIG 18V-4
		8m	TIG 18V-8

● TIG 18 & TIG 18V Flex

Head Style	Cable	Cable Length	Standard
Flex	3 Piece	4m	TIG 18-4 FX
		8m	TIG 18-8 FX
Flex + Valve	3 Piece	4m	TIG 18V-4 FX
		8m	TIG 18V-8 FX

● TIG 18 Finger Control

Head Style	Cable	Cable Length	Standard
Finger Control	3 Piece	4m	TIG 18-4 FC
		8m	TIG 18-8 FC

Cable/Hose Connector



Torch Handle



TIG 17/18/26 Torch Parts

CUP	COLLET BODY	COLLET	HEATSHIELD	TORCH	BACKCAP
<p>ALUMINA</p> <p>10N50 10N49 10N48 10N47</p> <p>10N46 10N45 10N44</p> <p>ALUMINA-LONG</p> <p>10N49L 10N48L 10N47L</p>	<p>STANDARD</p> <p>10N29 10N30 10N31 10N32 10N28 406488</p>	<p>STANDARD</p> <p>10N21 10N22 10N23 10N24 10N25 54N20</p> <p>WEDGE</p> <p>3C040GS 3C418GS 3C116GS 3C532GS 3C332GS</p> <p>REVERSE</p> <p>7C20 7C332 7C40 7C418 7C116 7C532</p>	<p>STANDARD</p> <p>300HS</p>	<p>LONG</p> <p>57Y02</p> <p>MEDIUM</p> <p>34015</p> <p>SHORT</p> <p>57Y04</p>	
<p>ALUMINA-GAS LENS</p> <p>54N18 54N17 54N16</p> <p>54N15 54N14 54N19</p> <p>ALUMINA LONG-GAS LENS</p> <p>OVERALL LENGTH 3"(7.6cm)</p> <p>54N17L 54N16L 54N15L 54N14L</p>	<p>GAS LENS</p> <p>45V29 45V24 45V25 45V26 45V27 45V28</p>	<p>STANDARD</p> <p>WEDGE</p> <p>REVERSE</p>	<p>GAS LENS</p> <p>3GHS</p>		
<p>ALUMINA-LARGE DIAMETER</p> <p>57N75 57N74 53N88 53N89 53N87</p> <p>ALUMINA LONG-LARGE DIAMETER</p> <p>OVERALL LENGTH 2.75"(6.9cm)</p> <p>57N75L 57N74L 53N88L 53N87L</p> <p>ALUMINA EXTRA LONG-LARGE DIAMETER</p> <p>OVERALL LENGTH 3.25"(8.3cm)</p> <p>57N75XL 57N74XL 53N88XL 53N87XL</p>	<p>LARGE DIAMETER</p> <p>45V116 45V64 995795 45V63</p>	<p>STANDARD</p> <p>WEDGE</p> <p>REVERSE</p>	<p>LARGE DIAMETER</p> <p>3GHSLD</p>		

Torch Head



Model	Rating		Cooling
	AC	DC	
TIG 17V	100A	140A	Air cooled
TIG 26V	130A	180A	Air cooled
TIG 18V	230A	320A	Water cooled

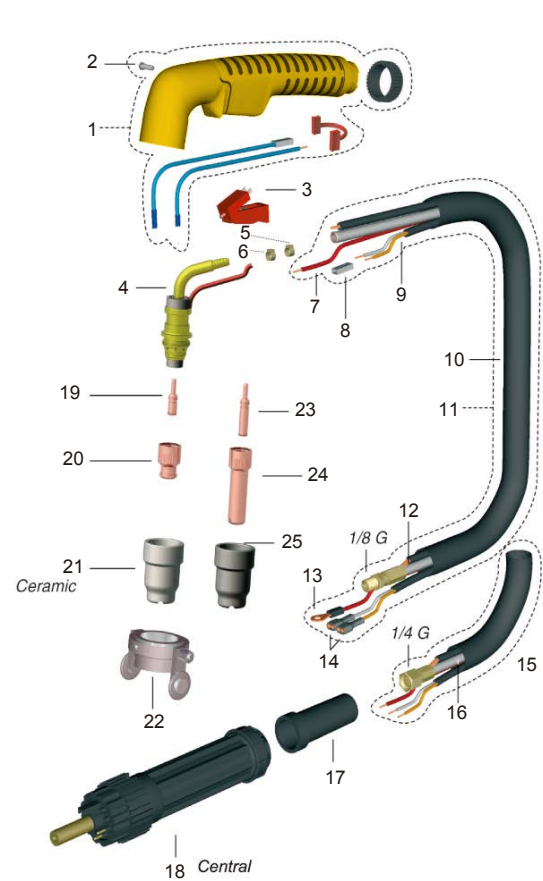
Model	Rating		Cooling
	AC	DC	
TIG 17	100A	140A	Air cooled
TIG 26	130A	180A	Air cooled
TIG 18	230A	320A	Water cooled

Model	Rating		Cooling
	AC	DC	
TIG 17 Flex	100A	140A	Air cooled
TIG 26 Flex	130A	180A	Air cooled
TIG 18 Flex	230A	320A	Water cooled

A51

- Ignition: HF
- Rating: 50A

- Cutting thickness: 10-15mm
- Duty cycle: 60%



Components

No.	Part Number	Description
5	EA0282	Hose Clamp Φ 9.5
6	EA0285	Hose Clamp Φ 10.5
7	BX0130	1.5mmmq-N07V- KD Red
8	BX0200	Female Trigger Wire Connector
9	BX0138	Control Cable
10	QB0096	Rubber Hose
11	PH0335	Cable Assembly
12	PH0340	Air-Power Cable 1/8G
13	BX0211	Nipple
14	BX0185	Female Faston
15	PH0336	Cable Assembly Central Adaptor
16	PH0341	Air-Power Cable 1/4G
17	CY0002	Cable Support
18	FY0023	Male Central Adaptor 7 Pins
19	PR0150	Electrode
20	PD0150-08	Tip 0.8
	PD0150-10	Tip 1.0
21	PC0150	Ceramic Outside Nozzle
22	CV0037	Carriage
23	PR0151	Long Electrode
24	PD0151-09	Tip 0.9
25	PC0151	Long Outside Nozzle

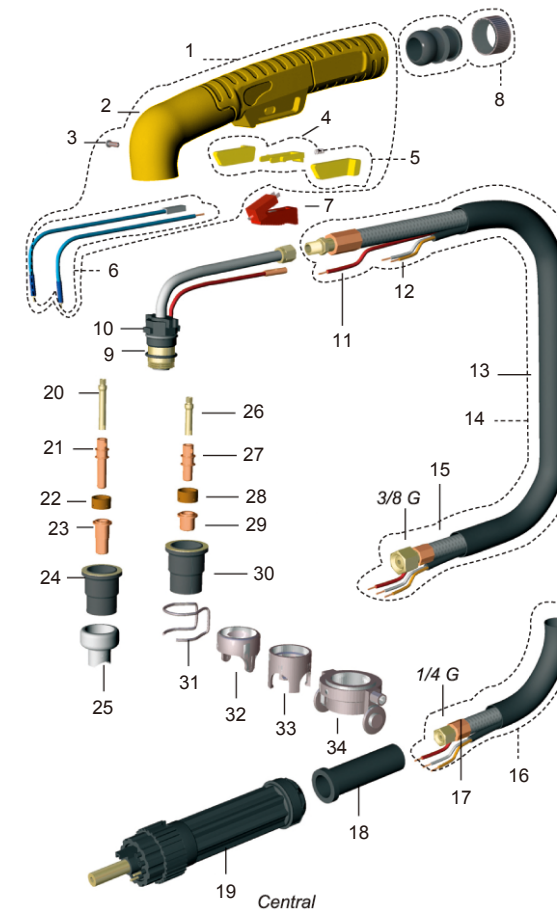
Components

No.	Part Number	Description
1	TP0120	Handle
2	EA0236	Screw
3	BX0020	Trigger
4	PF0150	Torch Head

A81

- Ignition: HF
- Rating: 80A

- Cutting thickness: 20-25mm
- Duty cycle: 60%



Components

No.	Part Number	Description
9	EA0125	O-Ring
10	PF0140	Torch Head A81
11	BX0125	Cable for Pilot Arc Per Meter
12	BX0138	Control Cable Per Meter
13	TQ0106	Outer Cover 20X22
14	PH0130	Cable Assembly 6m 3/8G
15	PH0203	Air-Power Cable 6m 3/8G
16	PH0132	Cable Assembly 6m 1/4G A81
17	PH0207	Air-Power Cable 6m 1/4G
18	CY0002	Cable Support
19	FY0023	Male Central Adaptor
20	FH0561	Long Diffuser
21	PR0115	Long Electrode A81 Long Life
22	PE0107	Air Diffuser A81
23	PD0106	Long Tip Φ 1.2 A81
24	PC0115	Outside Nozzle S54/A81
25	CV0201	Long Contact Cutting Attachment
26	FH0560	Diffuser
27	PR0109	Long Life Electrode A81
28	PE0107	Air Diffuser A81
29	PD0105-10	Long Tip Φ 1.0 A81
	PD0105-12	Long Tip Φ 1.2 A81
30	PC0115	Outside Nozzle S54/A81
31	CV0028	Stand Off Guide
32	CV0026	Two Pin Stand-off Guide S54/A81
33	CV0033	Four Pins Crown Shield
34	CV0051	Carriage S54/S75/A81

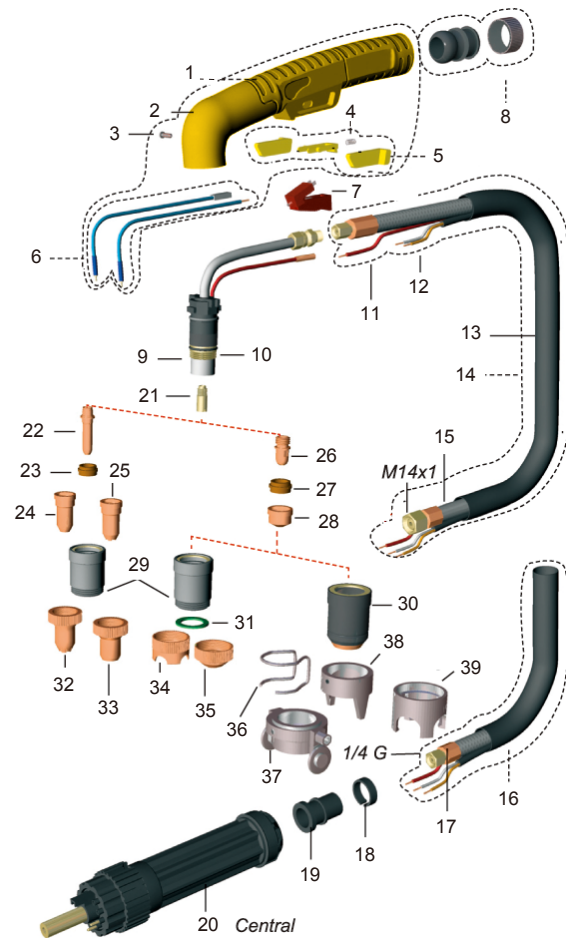
Components

No.	Part Number	Description
1	TP0110	S/A/CB Kit Handle
2	BW0345	Handle
3	EA0236	Screw
4	EA0313	Spring
5	BW0340	Key Safety Trigger
6	PT0201	Handle Spring Pins Kit
7	BX0020	Trigger
8	BW0310	Big Joint with Ring

A101

- Ignition: HF
- Rating: 100A

- Cutting thickness: 25-30mm
- Duty cycle: 60%



Components

No.	Part Number	Description
1	TP0110	S/A/CB Kit Handle
2	BW0345	Handle
3	EA0236	Screw
4	EA0313	Spring
5	BW0340	Key Safety Trigger
6	PT0201	Handle Spring Pins Kit
7	BX0020	Trigger
8	BW0311	Big Joint with Ring
9	PF0145	Torch Head A101
10	EA0131	O-Ring
11	BX0125	Cable for Pilot Arc Per Meter
12	BX0138	Control Cable Per Meter
13	TQ0106	Outer Cover 20x22



Components

No.	Part Number	Description
14	PH0142	Rie-Power Cable 6m M14X1
15	PH0109	Rie-Power Cable 6m
16	PH0143	Rie-Power Cable 6m Central Adaptor
17	PH0108	Air-Power Cable 6m 1/4G
18	CY0036	Cable Support
19	CY0035	Cable Support
20	FY0023	Male Central Adaptor
21	FH0562	Diffuser
22	PR0116	Long Electrode A101
23	PE0103	Air Difuser A151
24	PD0117-14	Long Tip Φ 1.4 A101/A141
	PD0117-17	Long Tip Φ 1.7 A101/A141
	PD0117-19	Long Tip Φ 1.9 A101/A141
25	PD0111-11	Long Tip Φ 1.1 A101/A141
26	PR0101	Electrode A101
27	PE0101	Air Diffuser A101/A141
28	PD0101-11	Tip Φ 1.1 A101/A141
	PD0101-14	Tip Φ 1.4 A101/A141
	PD0101-17	Tip Φ 1.7 A101/A141
29	PC0113	Contact Cutting Nozzle A101
	PC0130	Contact Cutting Nozzle Long Life A101
30	PC0109	Outside Nozzle A101
	PC0111	HeavyDuty Nozzle A101
31	FH0297	Four Pins Crown Shield
32	CV0009	Long Contact Cutting Attachment
33	CV0008	Contact Cutting Attachment
34	CV0039	Four Pins Crown Shield
35	CV0023	Contact Cutting Attachment
36	CV0011	Stand Off Guide
37	CV0021	Carriage
38	CV0012	Two Pins Crown Shield
39	CV0014	Four Pins Crown Shield

S45

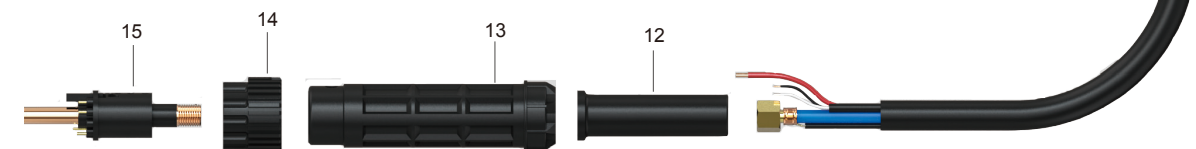
- Ignition: Non HF
- Rating: 40A

- Cutting thickness: 8-12mm
- Duty cycle: 60%



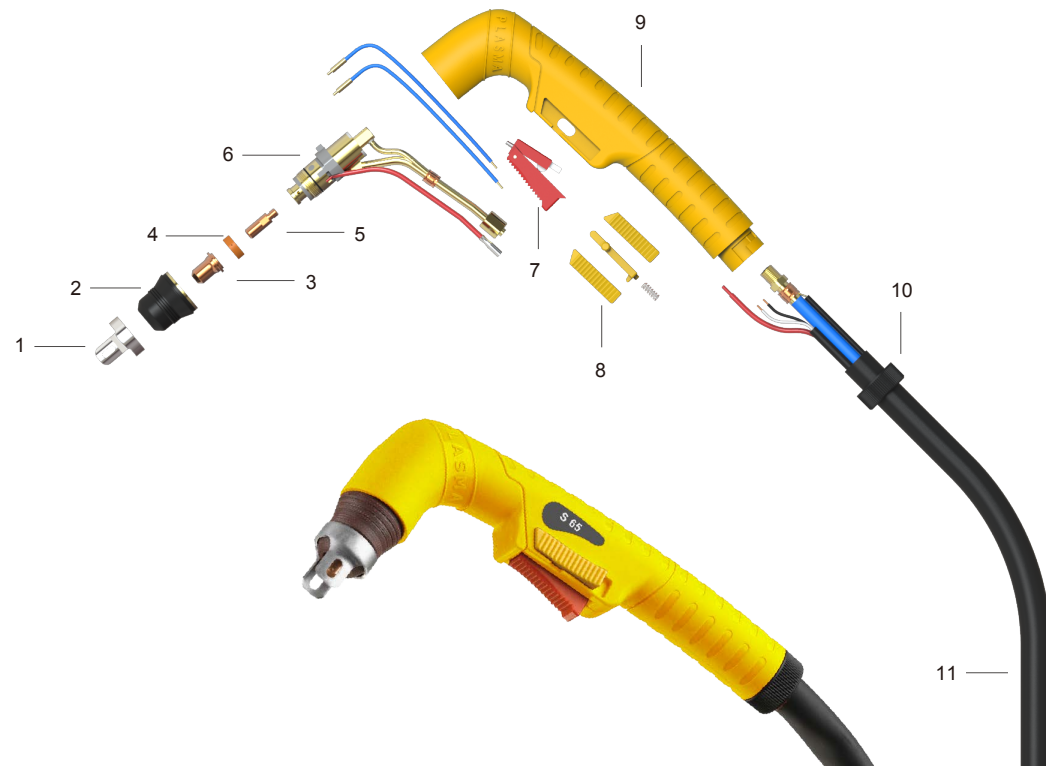
Components

No.	Part Number	Description
1	NCV0010	Stand off Guide
2	NPC0116	Retain Caps
3	NPD0116-06	Cutting Tip 20A
	NPD0116-08	Cutting Tip 30A
	NPD0116-09	Cutting Tip 40A
4	NPE0106	Swirl Ring
5	NPR0110	Electrode
6	PF0125	Torch Head Kit
7	BX0020	Trigger
8	PT0153	Key Safety Trigger
9	BW0440N	Handle
10	NBW0246	Handle Locking Nut
11	NPH0295-4A	Cable Assembly 4m
12	NCY0002	Back Cable Support
13	NBW0195	Back Handle
14	NBW0174	Locking Nut
15	NFY0018G	Central Connector



S65

- Ignition: Non HF
- Rating: 60A
- Cutting thickness: 8-20mm
- Duty cycle: 60%



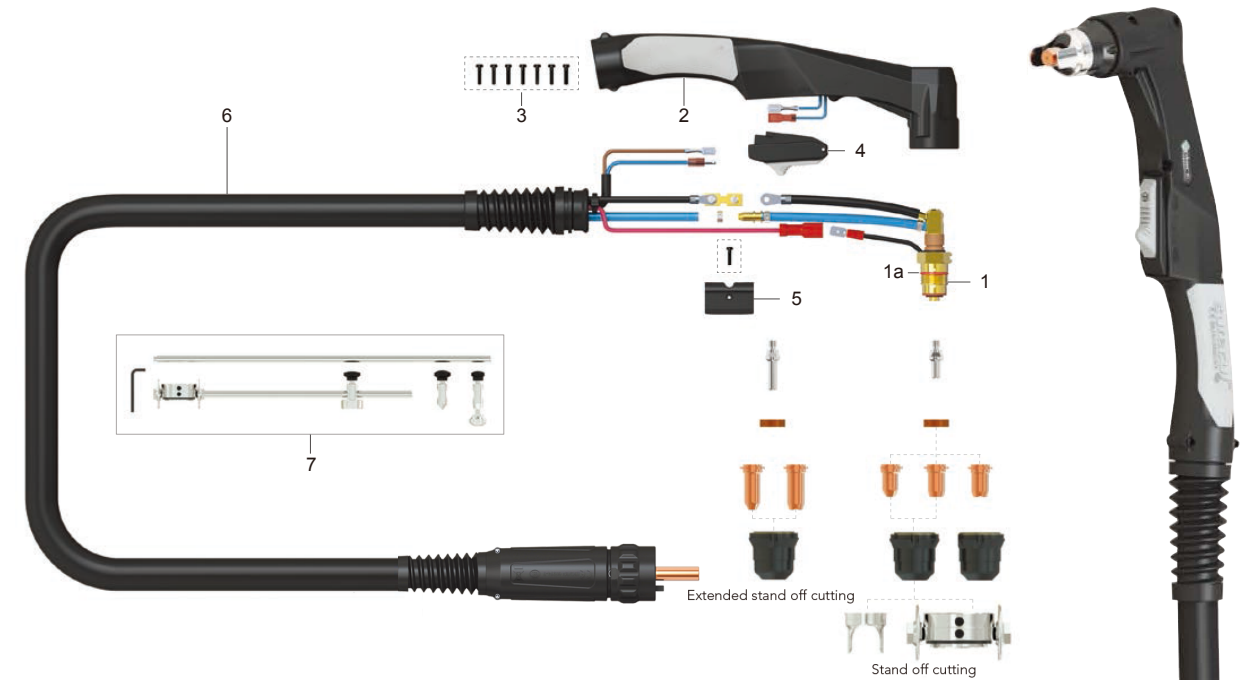
Components

No.	Part Number	Description
1	NCV1118N	Double Pointed Spacer
2	NPC0098	Outside Nozzle
3	NPD0098-08	Cutting Tip 40A
	NPD0098-10	Cutting Tip 60A
4	NPE0106	Swirl Ring
5	NPR0098	Electrode
6	NPF0128	Torch Head Kit
7	BX0020	Trigger
8	PT0153	Key Safety Trigger
9	BW0440N	Handle
10	NBW0246	Handle Locking Nut
11	NPH0307	Cable Assembly 6m
12	NCY0002	Back Cable Support
13	NBW0195	Back Handle
14	NBW0174	Locking Nut
15	NFY0018G	Central Connector



SC60

- Ignition: Non HF
- Rating: 60A
- Cutting thickness: 12-20mm
- Duty cycle: 60%

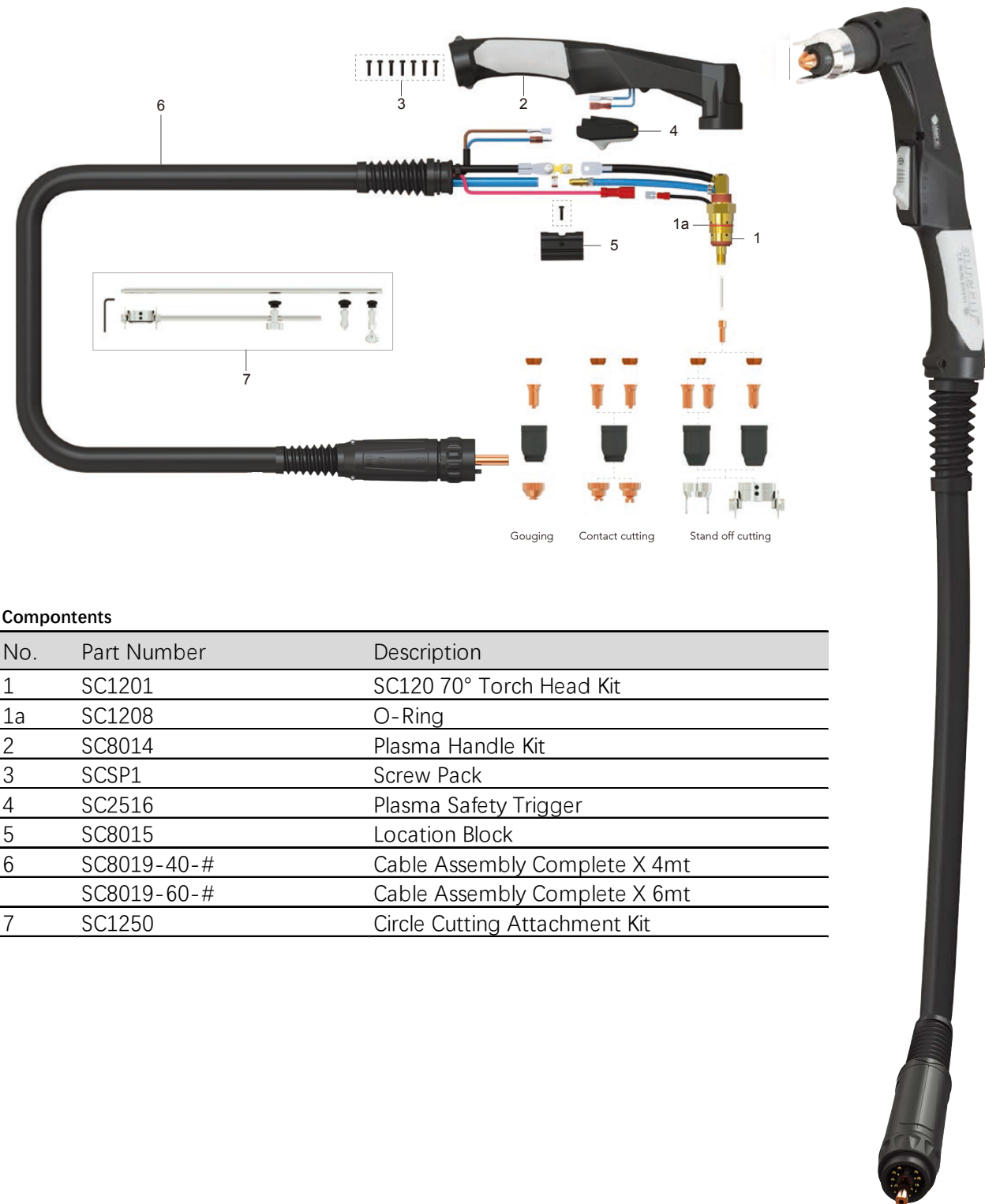


Components

No.	Part Number	Description
1	SC6001	SC60 70° Torch Head Kit
1a	SC2508	O-Ring
2	SC2514	Plasma Handle Kit
3	SCSP1	Screw Pack
4	SC2516	Plasma Safety Trigger
5	SC2515	Location Block
6	SC6019-40 -#	Cable Assembly Complete X 4mt
	SC6019-60 -#	Cable Assembly Complete X 6mt
7	SC2550	Circle Cutting Attachment Kit

SC120

- Ignition: Non HF
- Rating: 120A
- Cutting thickness: 30-35mm
- Duty cycle: 60%

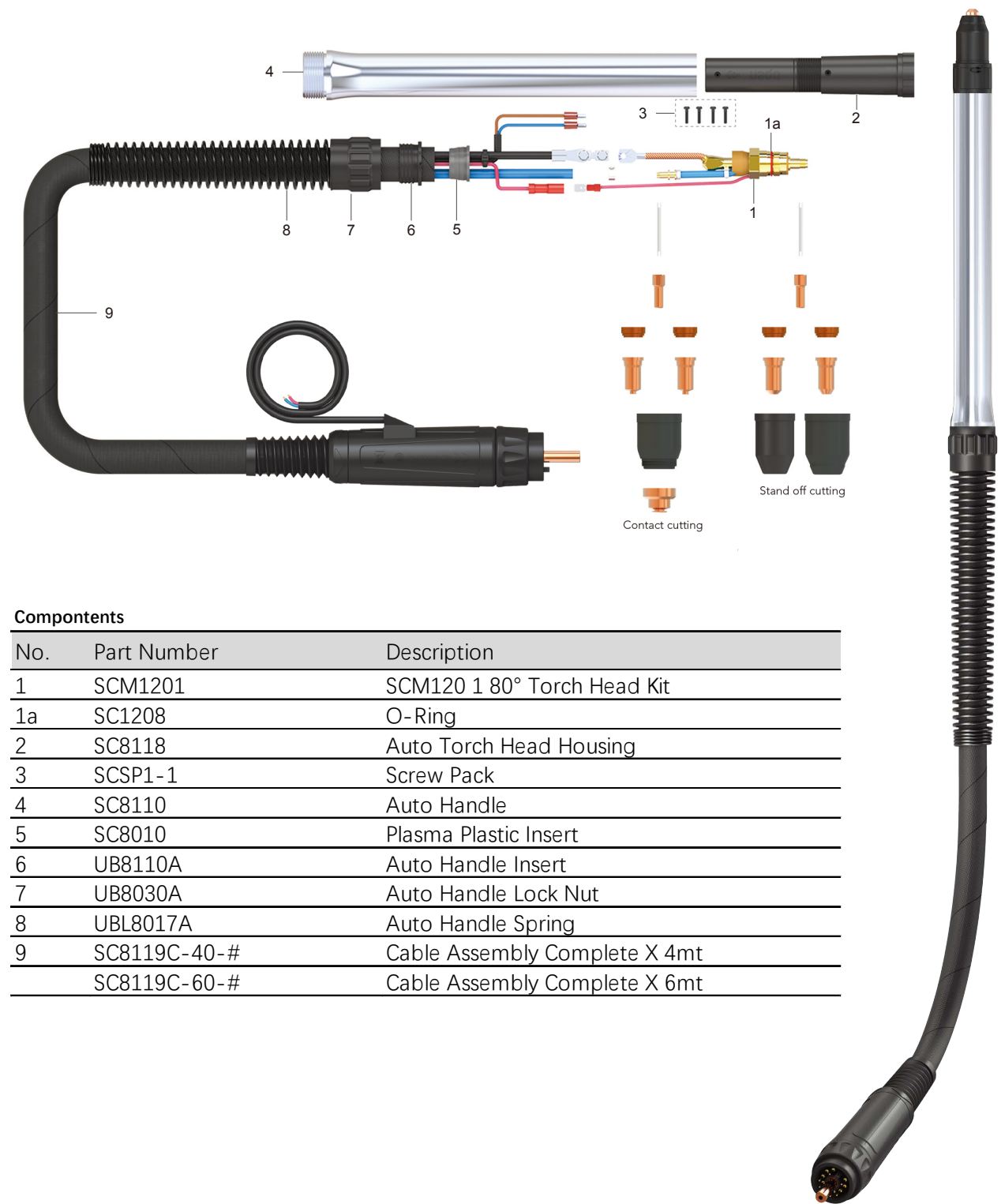


Components

No.	Part Number	Description
1	SC1201	SC120 70° Torch Head Kit
1a	SC1208	O-Ring
2	SC8014	Plasma Handle Kit
3	SCSP1	Screw Pack
4	SC2516	Plasma Safety Trigger
5	SC8015	Location Block
6	SC8019-40-#	Cable Assembly Complete X 4mt
	SC8019-60-#	Cable Assembly Complete X 6mt
7	SC1250	Circle Cutting Attachment Kit

SCM120

- Ignition: Non HF
- Rating: 120A
- Cutting thickness: 30-35mm
- Duty cycle: 60%

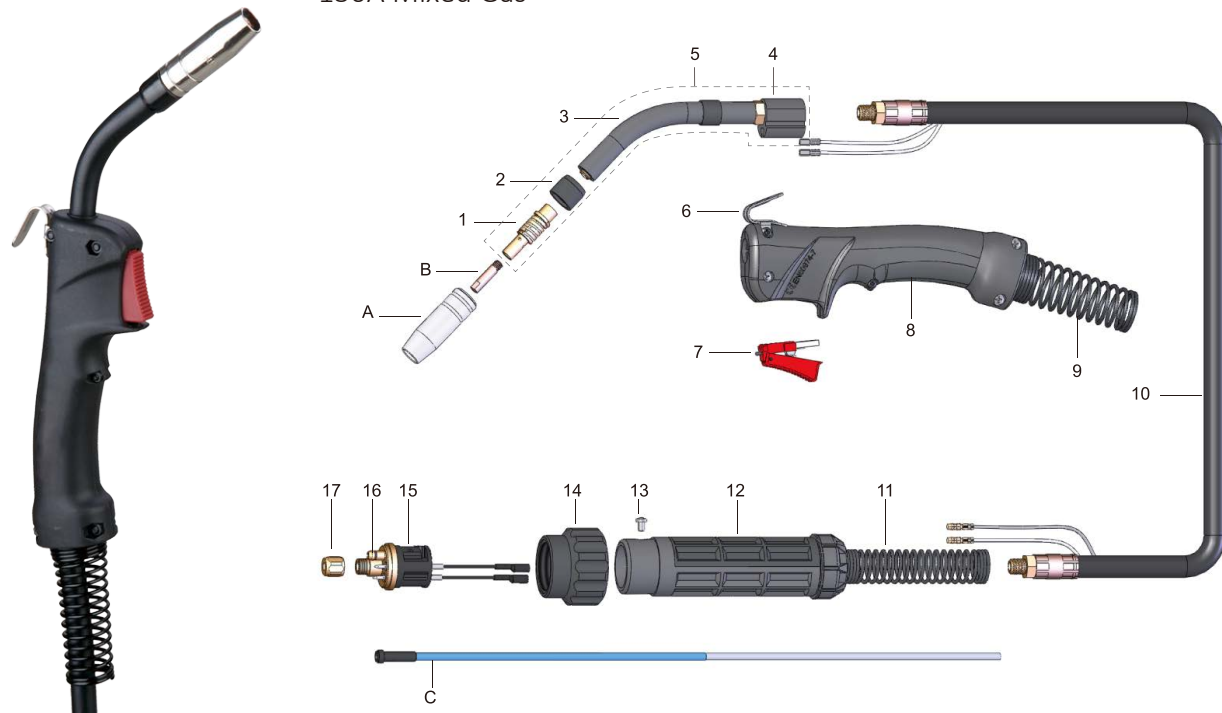


Components

No.	Part Number	Description
1	SCM1201	SCM120 1 80° Torch Head Kit
1a	SC1208	O-Ring
2	SC8118	Auto Torch Head Housing
3	SCSP1-1	Screw Pack
4	SC8110	Auto Handle
5	SC8010	Plasma Plastic Insert
6	UB8110A	Auto Handle Insert
7	UB8030A	Auto Handle Lock Nut
8	UBL8017A	Auto Handle Spring
9	SC8119C-40-#	Cable Assembly Complete X 4mt
	SC8119C-60-#	Cable Assembly Complete X 6mt

15AK

- Type of cooling: Air Cooled
- Rating: 180A CO₂
150A Mixed Gas
- Duty cycle: 60%
- Wire size: Ø0.6-1.0mm



Nozzles

No.	Part Number	Description
A	EA1295	Nozzle 9.5mm
	EA1212*	Nozzle 12mm
	EA1313	Tapered Nozzle 13mm
	EA1116	Nozzle 16mm

Contact Tips

No.	Part Number	Description
B	EB1106	Contact Tip 0.6mm M6x25 Ecu
	EB1108*	Contact Tip 0.8mm M6x25 Ecu
	EB1109	Contact Tip 0.9mm M6x25 Ecu
	EB1110	Contact Tip 1.0mm M6x25 Ecu
	EB1106L	Contact Tip 0.6mm M6x25 CuCrZr
	EB1108L	Contact Tip 0.8mm M6x25 CuCrZr
	EB1109L	Contact Tip 0.9mm M6x25 CuCrZr
	EB1110L	Contact Tip 1.0mm M6x25 CuCrZr

Liners

No.	Part Number	Description
C	ER1208-3	Steel Liner 0.6-0.8mmx3mm
	ER2210-3*	Steel Liner 0.8-1.0mmx3mm
	ER2310-3	Teflon Liner 0.8-1.0mmx3mm

Components

No.	Part Number	Description
1	ED1001	Diffuser
2	EF1011	Insulator
3	EF1211	Conductor Tube
4	EF1212	Plastic Body
5	EF1245	Gun Neck 45°
6	EG0001	Hanger Hook
7	EJ0003	Trigger
8	EH0101	Handle
9	ES0101	Front Spring Cable Support
10	EL1030	Cable Assembly 3m
11	ES2201	Back Spring Cable Support
12	EH2201	Back Handle
13	EH2211	Screw M4x6
14	EP2001	Gun Plug Nut
15	EU1002	Euro Gun Plug
16	Q504010	O-ring 4x1
17	EU1011	Nut M10x1

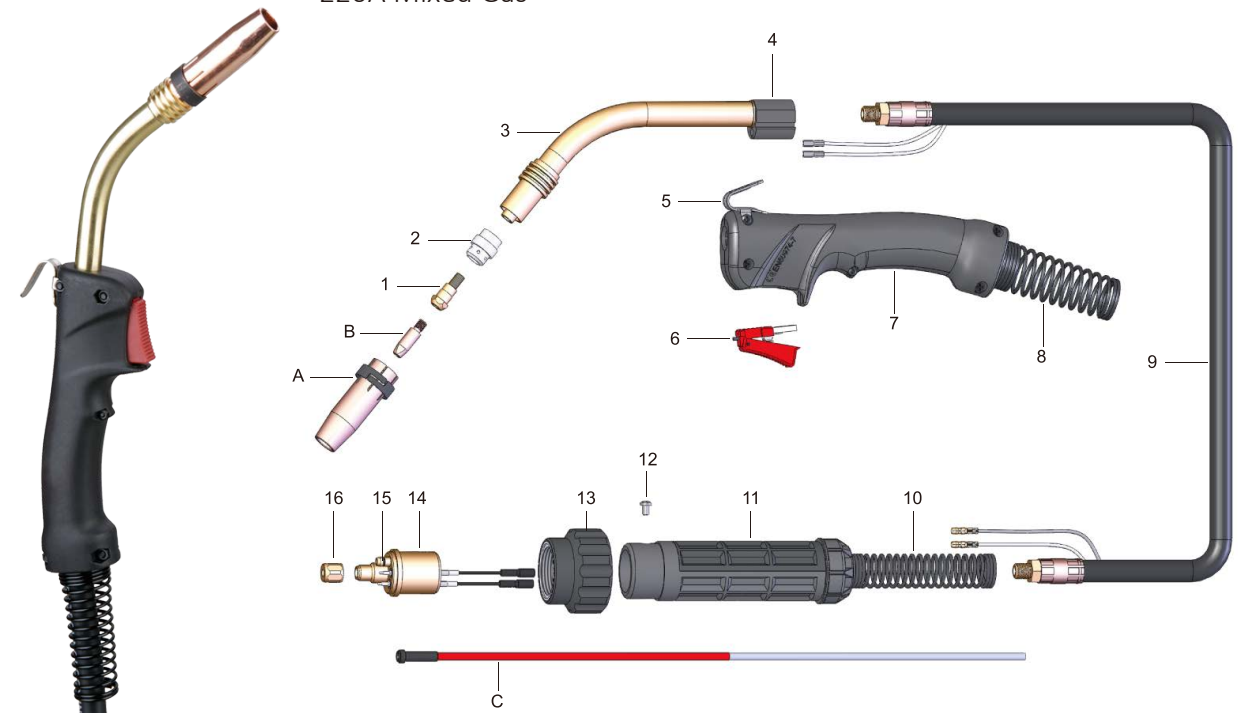
*Denotes Standard Build

Torch Handle



24KD

- Type of cooling: Air Cooled
- Rating: 250A CO₂
220A Mixed Gas
- Duty cycle: 60%
- Wire size: Ø0.8-1.2mm



Nozzles

No.	Part Number	Description
A	EA2210	Nozzle 10mm
	EA22125*	Nozzle 12.5mm
	EA2117	Nozzle 17mm

Contact Tips

No.	Part Number	Description
B	EB2208	Contact Tip 0.8mm M6x8x28 Ecu
	EB2210*	Contact Tip 1.0mm M6x8x28 Ecu
	EB2212	Contact Tip 1.2mm M6x8x28 Ecu
	EB2208L	Contact Tip 0.8mm M6x8x28 CuCrZr
	EB2210L	Contact Tip 1.0mm M6x8x28 CuCrZr
	EB2212L	Contact Tip 1.2mm M6x8x28 CuCrZr

Liners

No.	Part Number	Description
C	ER2210-3	Steel Liner 0.8-1.0mmx3mm
	ER3212-3*	Steel Liner 1.0-1.2mmx3mm
	ER2310-3	Teflon Liner 0.8-1.0mmx3mm
	ER3312-3	Teflon Liner 1.0-1.2mmx3mm

Components

No.	Part Number	Description
1	EC2001	Contact Tip Socket
2	ED2001	Diffuser, Ceramic
3	EF2250	Gun Neck 50°
4	EF1212	Plastic Body
5	EG0001	Hanger Hook
6	EJ0003	Trigger
7	EH0101	Handle
8	ES0101	Front Spring Cable Support
9	EL2030	Cable Assembly 3m
10	ES2201	Back Spring Cable Support
11	EH2201	Back Handle
12	EH2211	Screw M4x6
13	EP3001	Gun Plug Nut
14	EU1001	Euro Gun Plug
15	Q504010	O-ring 4x1
16	EU1011	Nut M10x1

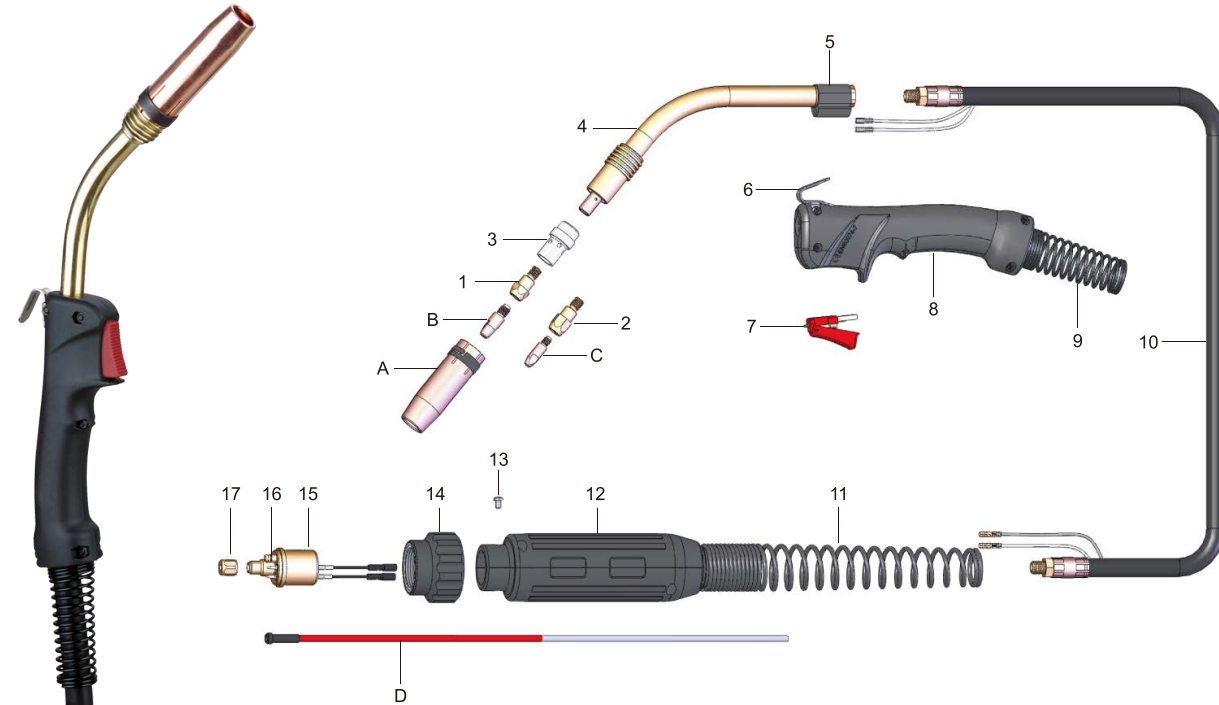
*Denotes Standard Build

Torch Handle



36KD

- Type of cooling: Air Cooled
- Rating: 340A CO₂
300A Mixed Gas
- Duty cycle: 60%
- Wire size: Ø0.8-1.6mm



Nozzles

No.	Part Number	Description
A	EA3212	Nozzle 12mm
	EA3216*	Nozzle 16mm
	EA3317	Tapered Nozzle 17mm
	EA3119	Nozzle 19mm

Contact Tips

No.	Part Number	Description
B	EB3210	Contact Tip 1.0mm M8x10x30 Ecu
	EB3212*	Contact Tip 1.2mm M8x10x30 Ecu
	EB3216	Contact Tip 1.6mm M8x10x30 Ecu
	EB3210L	Contact Tip 1.0mm M8x10x30 CuCrZr
	EB3212L	Contact Tip 1.2mm M8x10x30 CuCrZr
	EB3216L	Contact Tip 1.6mm M8x10x30 CuCrZr
C	EB2208	Contact Tip 0.8mm M6x8x28 Ecu
	EB2210	Contact Tip 1.0mm M6x8x28 Ecu
	EB2212	Contact Tip 1.2mm M6x8x28 Ecu
	EB2208L	Contact Tip 0.8mm M6x8x28 CuCrZr
	EB2210L	Contact Tip 1.0mm M6x8x28 CuCrZr
	EB2212L	Contact Tip 1.2mm M6x8x28 CuCrZr

Liners

No.	Part Number	Description
D	ER3212-3*	Steel Liner 1.0-1.2mmx3mm
	ER5216-3	Steel Liner 1.2-1.6mmx3mm
	ER3312-3	Teflon Liner 1.0-1.2mmx3mm
	ER5316-3	Teflon Liner 1.2-1.6mmx3mm

Components

No.	Part Number	Description
1	EC3001*	Contact Tip Socket M8x28
	EC3002	Contact Tip Socket M8x32
2	EC3003	Contact Tip Socket M6x28
	EC3004	Contact Tip Socket M6x32
3	ED3001	Diffuser, Ceramic
4	EF3250	Gun Neck 50°
5	EF1212	Plastic Body
6	EG0001	Hanger Hook
7	EJ0003	Trigger
8	EH0101	Handle
9	ES0101	Front Spring Cable Support
10	EL3030	Cable Assembly 3m
11	HDS0202	Back Spring Cable Support
12	HDH0202	Back Handle
13	EH2211	Screw M4x6
14	EP3001	Gun Plug Nut
15	EU1001	Euro Gun Plug
16	Q504010	O-ring 4x1
17	EU1011	Nut M10x1

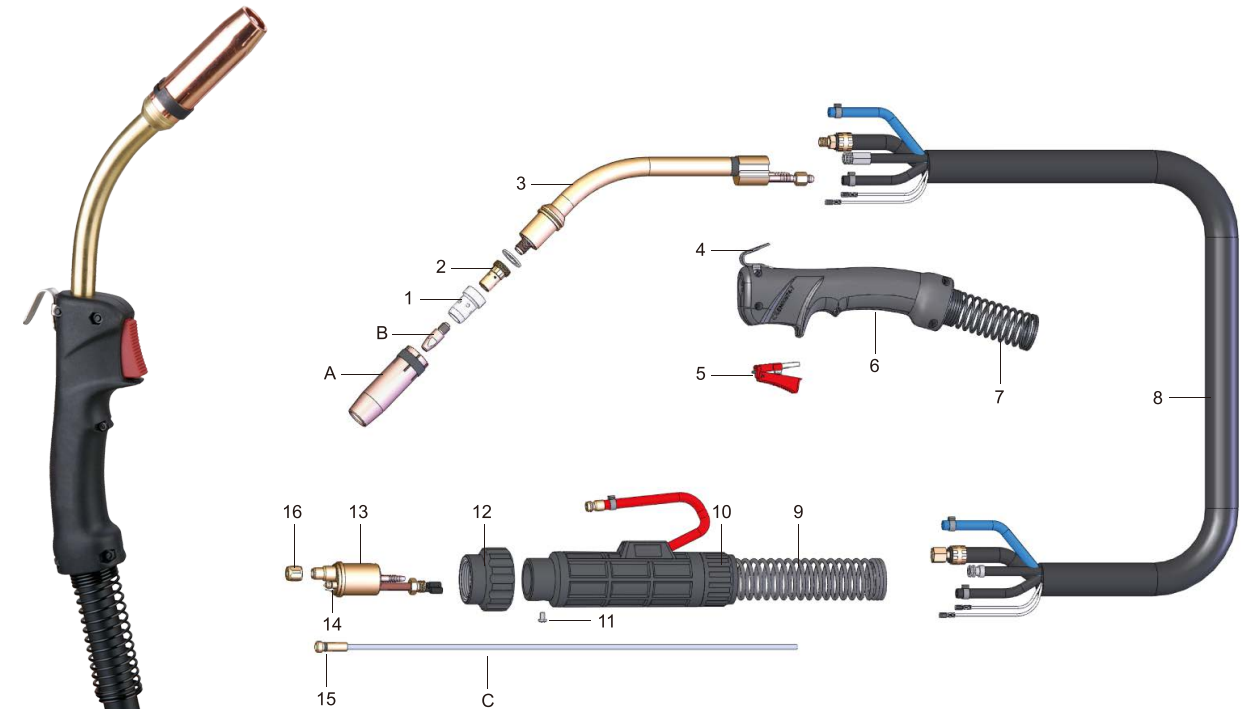
*Denotes Standard Build

Torch Handle



501D Water Cooling

- Type of cooling: Water Cooled
- Rating: 500A CO₂
450A Mixed Gas
- Duty cycle: 100%
- Wire size: Ø1.0-1.6mm



Nozzles

No.	Part Number	Description
A	SA5214	Nozzle 14mm
	SA5216*	Nozzle 16mm
	SA5315	Tapered Nozzle 15mm
	SA5120	Nozzle 20mm

Contact Tips

No.	Part Number	Description
B	EB3210	Contact Tip 1.0mm M8x10x30 Ecu
	EB3212	Contact Tip 1.2mm M8x10x30 Ecu
	EB3216	Contact Tip 1.6mm M8x10x30 Ecu
	EB3210L	Contact Tip 1.0mm M8x10x30 CuCrZr
	EB3212L	Contact Tip 1.2mm M8x10x30 CuCrZr
	EB3216L	Contact Tip 1.6mm M8x10x30 CuCrZr

Liners

No.	Part Number	Description
C	SR5216-3*	Steel Liner 1.2-1.6mmx3mm
	SR5316-3	Teflon Liner 1.2-1.6mmx3mm

Components

No.	Part Number	Description
1	SD5001	Diffuser
2	SC5001*	Contact Tip Socket (Standard)
	SC5002	Contact Tip Socket (Long)
3	SF5245	Gun Neck 45°, Euro Fitting
4	EG0001	Hanger Hook
5	EJ0003	Trigger
6	EH0101	Handle
7	ES0102	Front Spring Cable Support
8	SL5030	Cable Assembly 3m, Euro Fitting
9	SS5201	Back Spring Cable Support
10	SH5201	Back Handle
11	EH2211	Screw M4x6
12	EP3001	Gun Plug Nut
13	SU1001	Euro Gun Plug, Water Cooling Style
14	Q504010	O-ring 4x1
15	Q503515	O-ring 3.5x1.5
16	EU1011	Nut M10x1

*Denotes Standard Build

TWECO

● Tweco No.2

Type of cooling: Air Cooled
 Rating: 200A CO₂
 160A Mixed Gas
 Duty cycle: 60%
 Wire size: Ø0.6-0.9mm



● Tweco No.3

Type of cooling: Air Cooled
 Rating: 300A CO₂
 250A Mixed Gas
 Duty cycle: 60%
 Wire size: Ø0.8-1.2mm



● Tweco No.4

Type of cooling: Air Cooled
 Rating: 400A CO₂
 380A Mixed Gas
 Duty cycle: 60%
 Wire size: Ø0.8-1.2mm



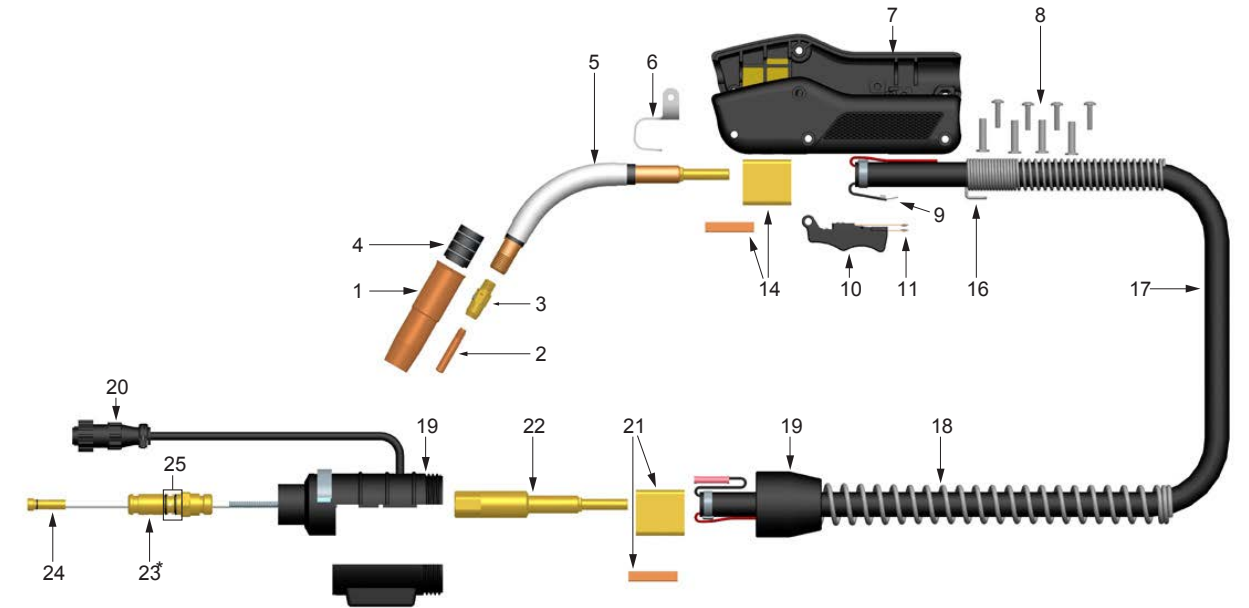
● Tweco No.5

Type of cooling: Air Cooled
 Rating: 500A CO₂
 450A Mixed Gas
 Duty cycle: 60%
 Wire size: Ø1.2-1.6mm



● Torch Conversion Instruction

1. Disconnect MIG Torch from machine. 2. Remove Torch hanger, handle(both halves) and trigger.	
3. Place the MIG Torch assembly inside the bottom handle half and confirm that your strain relief is inside the handle half.	
4. Mount the wire connectors to the new trigger and place the trigger inside the handle half.	
5. Lay the top handle half in place on the bottom half and begin inserting screws.	
6. Place the MIG Torch hanger in position and tighten all screws. 7. MIG Torch is ready for use.	

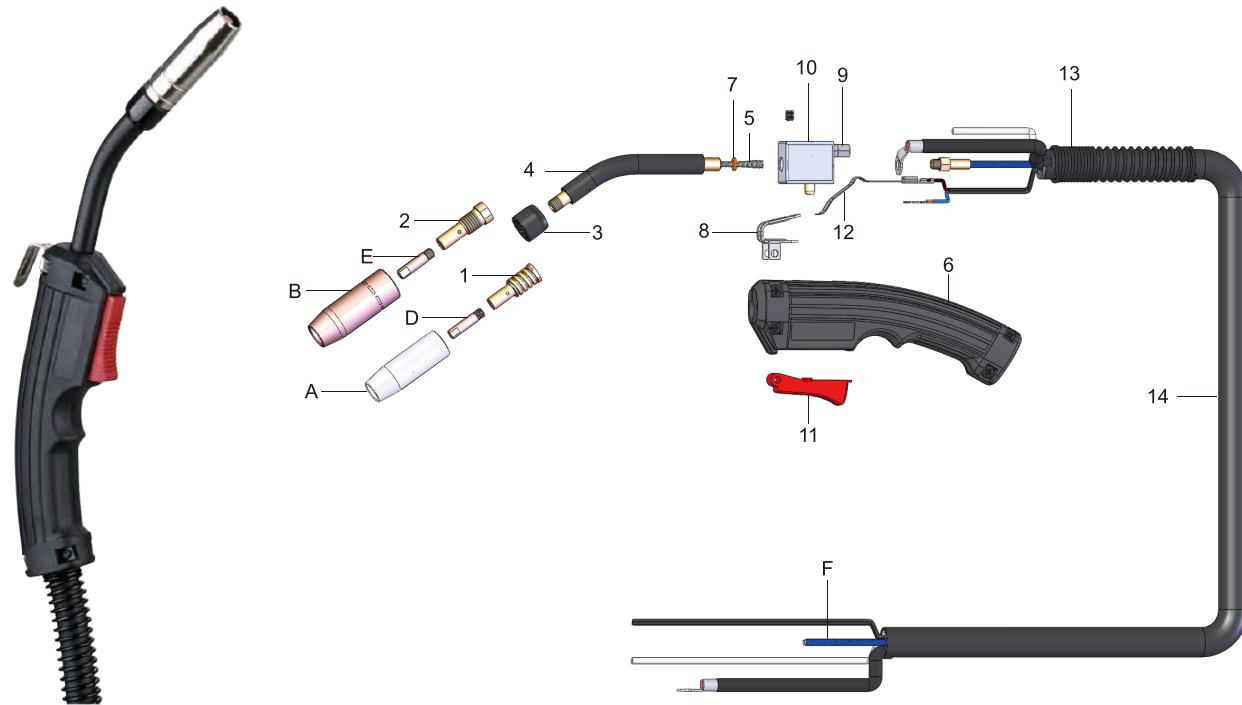


Components

No.	Description	No.2	No.3	No.4	No.5
1	Nozzles	22 Series	23 Series	24A Series	25CT Series w/35CT Base
2	Contact Tips	14 Series	14 Series	14 Series	15H Series
3	Diffusers	52	54A	54A	55 Series
4	Nozzle Insulators	32	N/A	34A	N/A
5	Conductor Tubes	62J Series	63J Series	64J Series	65J Series
6	Gun Hanger	152 2020-2152		154B 2040-2156	
7	Handle Assembly (Standard)	83RC 2030-2084		84RC 2040-2087	85RC 2050-2088
	Handle Assembly (Dual Schedule)	N/A		84RC-DS 2040-2088	N/A
8	Binder Post & Screw (4 Required)	122FM 2020-2122		124FM 2040-2124	
9	Trigger Control Wire Terminal (Standard-2 ea.)	244 2040-2224			
	Trigger Control Wire Terminal (Dual Schedule-4 ea.)	N/A		244LK 2040-2246	N/A
10	Trigger Assembly (Standard)	92RR 2020-2093		94RR 2040-2098	
11	Trigger Blades	94RC 2040-2100			
12	Trigger Assembly (Dual Schedule)	N/A		94RDS 2040-2101	
13	Trigger Assembly (Locking)	N/A		94R-L 2040-2102	
14	Front Cable Connector	102 2020-2102		104 2040-2104	
15	Cable Clamp	136 2060-2690			
16	Front Strain Relief Spring	142-6-SPR 2020-2144	144-6-SPR 2040-2146	145-6-SPR 2050-2147	
17	Cablehoz	200 1720-2100	300 1730-2100	400 1740-2100	500 1750-2100
18	Rear Strain Relief Spring	235RSSR 2060-2035			
19	Rear Case (Direct Plug)	R6RC 2060-2040			
	Rear Case (Euro)	X6RC 2060-2006			
20	Control Wire (Standard)	MS354-DSM 2060-2140			
	Control Wire (Dual Schedule)	194DS 2040-2195			
21	Rear Cable Connector (Direct Plug)	104 2040-2104			
	Rear Cable Connector (Euro)	172X-M 2020-2181	174X-M 2040-2181		N/A
22	Adapter (Direct Plug)	M170-2H 2020-2165	M170-4H 2020-2166		M170-5H 2020-2167
23	Connector Plugs	Tweco, Miller, Lincoln, Euro-Kwik Styles Available			
24	Conduit Assembly	42 Series, 44 Series, and 45 Series Available			
NS	Repair/Conversion Kits	83R-CK 2030-2085	84R-CK 2040-2089	85R-CK 2050-2089	

90AF

- Type of cooling: Air Cooled
- Rating: 90A Mixed Gas
- Duty cycle: 35%
- Wire size: Ø0.6-1.0mm



Nozzles

No.	Part Number	Description
A	EA1212	Nozzle 12mm
B	21-50*	Nozzle Self Insulated
	21-50F	Nozzle Self Insulated

Contact Tips

No.	Part Number	Description
D	EB1106	Contact Tip 0.6mm M6x25 Ecu
	EB1108*	Contact Tip 0.8mm M6x25 Ecu
	EB1109	Contact Tip 0.9mm M6x25 Ecu
	EB1110	Contact Tip 1.0mm M6x25 Ecu
E	11-23	Contact Tip 0.023"/0.6mm Ecu
	11-30*	Contact Tip 0.030"/0.8mm Ecu
	11-35	Contact Tip 0.035"/0.9mm Ecu
	11-40	Contact Tip 0.040"/1.0mm Ecu

Liners

No.	Part Number	Description
F	FLR1210-2.5	Steel Liner 0.6-1.0mmx2.5mm
	FLR1210-3*	Steel Liner 0.6-1.0mmx3mm

Components

No.	Part Number	Description
1	FLD9002	Diffuser C/W Spring
2	FD9001	Diffuser
3	EF1011	Insulator
4	FLF9235*	Conductor Tube 35°
	FLF9245	Conductor Tube 45°
5	FLR91170	Front Liner
6	FLH9111	Handle
7	Q504219S	O-ring 4.2x1.9
8	EG0002	Handle Hook
9	FL9027	Gas Pipe Connector
10	FLL9011	Gas Valve
11	FLH9112	Trigger
12	FLJ9021	Trigger Shraprel
13	ES2102	Front Spring Cable Shraprel
14	FLL9025	Cable Assembly 2.5m
	FLL9030	Cable Assembly 3m

*Denotes Standard Build

Liners

Steel Liners



Euro-Type

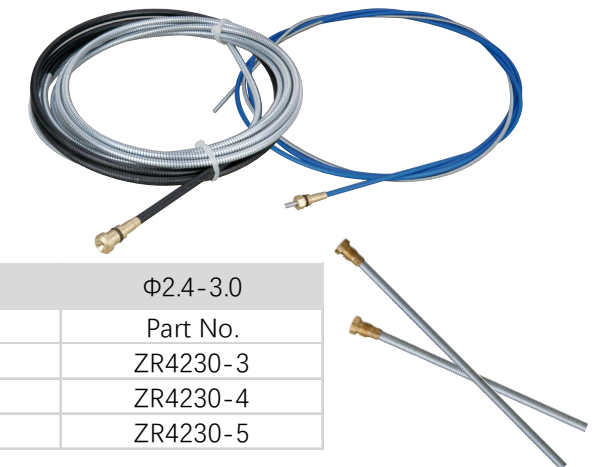
	Blue Ø0.6-0.8	Blue Ø0.8-1.0	Red Ø1.0-1.2	Yellow Ø1.2-1.6
Length	Part No.	Part No.	Part No.	Part No.
3m	ER1208-3	ER2210-3	ER3212-3	ER5216-3
4m	ER1208-4	ER2210-4	ER3212-4	ER5216-4
5m	ER1208-5	ER2210-5	ER3212-5	ER5216-5

Tweco

	Black Ø0.8-0.9	Black Ø0.9-1.2	Black Ø1.0-1.2	Black Ø1.6	Black Ø2.0	Black Ø2.4
Length	Part No.	Part No.	Part No.	Part No.	Part No.	Part No.
4.6m	42-3035-15		42-4045-15			
4.6m		44-3545-15		44-116-15	44-564-15	
4.6m		45-3545-15		45-116-15	45-564-15	45-332-15

Bernard

	Blue Ø0.9-1.2	Grey Ø1.2-1.6
Length	Part No.	Part No.
4.6m	43115	
4.6m		44215



Water Cooled

	Ø1.2-1.6
Length	Part No.
3m	SR5216-3
4m	SR5216-4
5m	SR5216-5

Self Shield

	Ø1.6-2.4	Ø2.4-3.0
Length	Part No.	Part No.
3m	ZR3224-3	ZR4230-3
4m	ZR3224-4	ZR4230-4
5m	ZR3224-5	ZR4230-5

Teflon Liners



Euro-Type

	Red Ø0.8-1.0	Blue Ø1.0-1.2	Yellow Ø1.2-1.6
Length	Part No.	Part No.	Part No.
3m	ER2310-3	ER3312-3	ER5316-3
4m	ER2310-4	ER3312-4	ER5316-4
5m	ER2310-5	ER3312-5	ER5316-5

Tweco

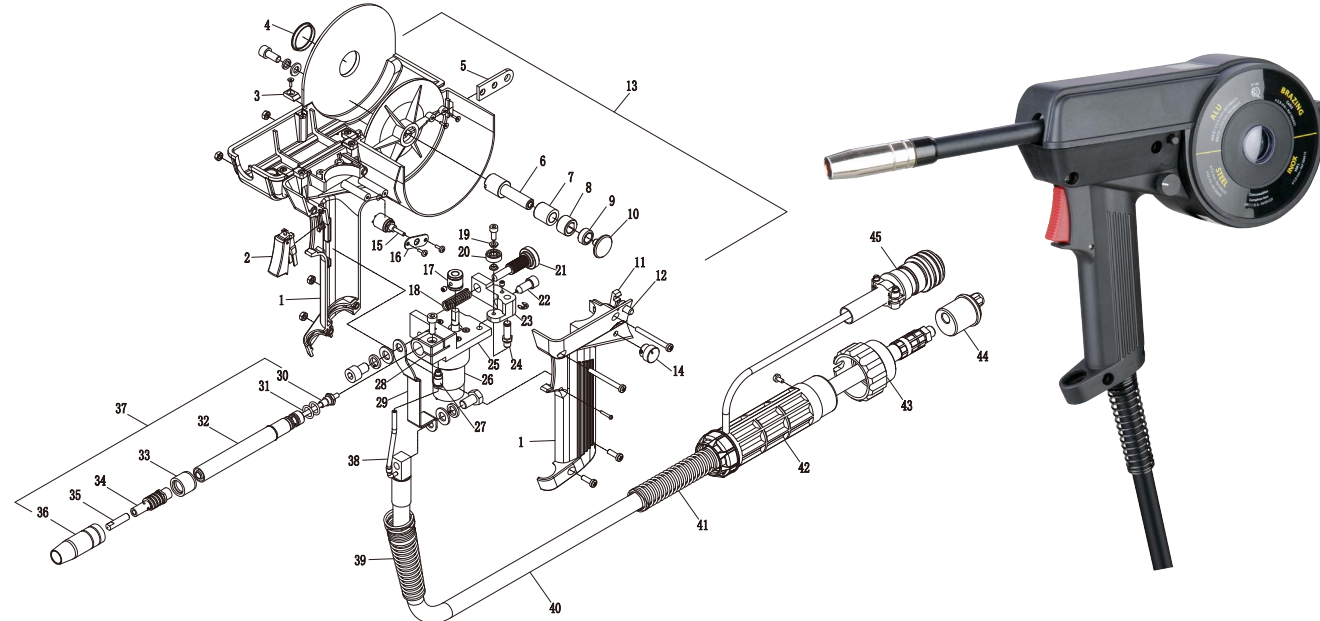
	Red Ø0.8-0.9	Blue Ø0.9-1.2	Yellow Ø1.6
Length	Part No.	Part No.	Part No.
4.6m	42T-3035-15	42T-3545-15	
4.6m		44T-3545-15	44T-116-15

Bernard

	Blue Ø0.9-1.2	Grey Ø1.2-1.6
Length	Part No.	Part No.
4.6m	43115T	
4.6m		44215T

Spool Gun

- Type of cooling: Air Cooled
- Rating: 200A CO₂
160A Mixed Gas
- Duty cycle: 60%
- Wire size: Ø0.6-1.0mm



Components

No.	Part Number	Description
1	LWH2101	Gun Handle
2	EJ0003	Trigger Switch
3	LWH2111	Block
4	LWH2112	Cover
5	LWH2116	Hanger Hook
6	LWT2015	Spool Shaft
7	LMT2014	Bushing Resistance Rubber
8	LWT2013	Location Bushing
9	LMT2012	Adjusting Nut
10	LWT2011	Locking Screw
11	LWH2113	Hook
12	LWH2114	Press Button
13	LWH2100	Handle Assembly (1-12)
14	LWH2115	WFS Control Knob
15	Q8110*	Potentiometer 10KΩ
	Q8105	Potentiometer 5KΩ
	Q8101	Potentiometer 1KΩ
16	LWI2011	Potentiometer Housing
17	LWZ2011*	Drive Roll 0.8/0.9
	LWZ2020	Drive Roll 1.0/1.2
18	LWZ2018	Press Arm Spring
19	LWZ2016	Bushing
20	LWZ2017	Bearing
21	LWZ2015	Press Arm Bolt
22	LWZ2014	Inlet Guide
23	LWZ2013	Press Arm

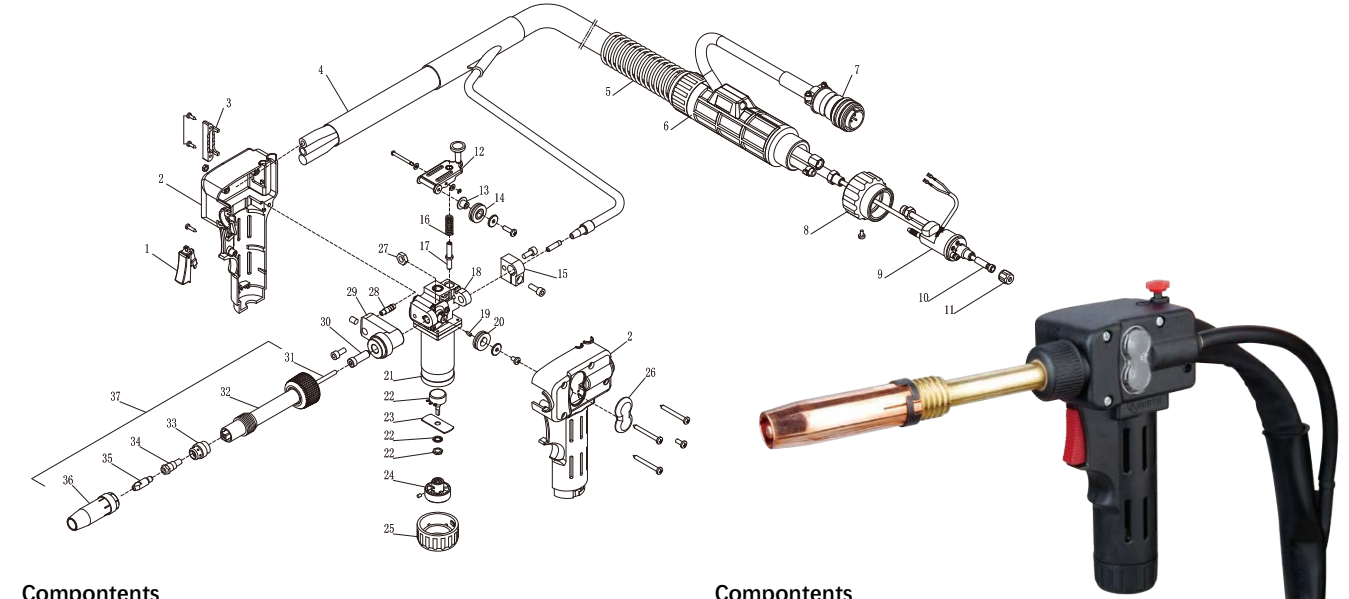
Components

No.	Part Number	Description
24	LWZ2012	Press Arm Shaft
25	LWZ2019	Bracket
26	LZ2830*	Motor and Gear Box (30:1)
	LZ2820	Motor and Gear Box (20:1)
27	Q9104	Gas Connector
28	LWZ2000	Wire Feeder Assembly (17-27)
29	LWK2001	Conducting Bar
30	LWR11170	Liner Assembly
31	Q507618	O-Ring 7.65x1.78
32	LWF1111	Straight
33	EF1011	Insulator
34	LWD1101	Diffuser C/W Spring
35	EB1108*	Contact Tip 0.8mm M6x25 Ecu
	EB1109	Contact Tip 0.9mm M6x25 Ecu
	EB1110	Contact Tip 1.0mm M6x25 Ecu
36	EA1212	Nozzle 12mm
37	LWF11180	Gun Neck 180°
38	LWW2101	Internal Gas Hose
39	LWS2101	Front Spring Cable Support
40	LWL2140	Cable Assembly 4m
41	ES2201	Back Spring Cable Support
42	EH2201	Gun Plug Housing
43	EP2001	Gun Plug Nut
44	LWU2001*	Euro Gun Plug Without Control
	LTU2002	Euro Gun plug
45	MV0010	10 Pin Connector

*Denotes Standard Build

Push Pull Torch

- Type of cooling: Air Cooled
- Rating: 350A CO₂
300A Mixed Gas
- Duty cycle: 60%
- Wire size: Ø0.8-1.2mm



Components

No.	Part Number	Description
1	EJ0003	Trigger Switch
2	LTH2101	Gun Handle
3	LTH2111	Cable Clamp
4	LTL2060	Cable Assembly 6m
5	SS5201	Back Spring Cable Support
6	SH5201	Back Handle
7	MV0010	10 Pin Connector
8	EP3001	Gun Plug Nut
9	LTU2001	Euro Gun plug
10	LTR2210-6	Steel Liner 0.8-1.0mmx6mm
	LTR3212-6	Steel Liner 1.0-1.2mmx6mm
	LTR2310-6	Teflon Liner 0.8-1.0mmx6mm
	LTR3312-6	Teflon Liner 1.0-1.2mmx6mm
11	EU1011	Nut M10x1
12	LTU2001	Press Arm Shaft
13	LGX2015	Bearing
14	LGX2016*	Push Roll .030/.035 (0.8/0.9mm)
	LGX2017	Push Roll .047 (1.2mm)
15	LTX2015	Clamp
16	LGX2012	Press Arm Spring
17	LGX2011	Press Arm Bolt
18	LTX2001	Gearbox Assembly
19	LGX2018	Key
20	LGX2019*	Drive Roll .030/.035 (0.8/0.9mm)
	LGX2020	Drive Roll .047 (1.2mm)
21	LZ3601	Motor
22	Q8210*	Potentiometer 10KΩ
	Q8205	Potentiometer 5KΩ
	Q8201	Potentiometer 1KΩ
23	LTZ2012	Potentiometer Housing
24	LTZ2013	WFS Control Knob

Components

No.	Part Number	Description
25	LTH2112	Nut, Handle
26	LGH2011	Cover, Drive Roll
27	LGH2111	Nut
28	LTX2013	Gas Connector
29	LTX2012	Contact Adaptor
30	LTX2011	Pin, Head Tube
31	LTR21134*	Liner, Used with Gun Neck 180°
	LTR21142	Liner, Used with Gun Neck 45°
32	LTF2111	Straight Conductor Tube
	LTF2112	Goose Conductor Tube
33	ED2001	Diffuser
34	EC2001	Contact Tip Socket
35	EB2208	Contact Tip 0.8mm
	EB2210*	Contact Tip 1.0mm
	EB2212	Contact Tip 1.2mm
36	EA22125	Nozzle 12.5mm
37	LTF21180*	Gun Neck 180°
	LTF2245	Gun Neck 45°
38	LTR31160*	Liner, Used with Gun Neck 180°
	LTR31168	Liner, Used with Gun Neck 45°
39	LTF3111	Straight Conductor Tube
	LTF3112	Goose Conductor Tube
40	ED3001	Diffuser
41	EC3002	Contact Tip Socket M8x32
42	EB3210*	Contact Tip 1.0mm M8x10x30 Ecu
	EB3212	Contact Tip 1.2mm M8x10x30 Ecu
	EB3210L	Contact Tip 1.0mm M8x10x30 CuCrZr
	EB3212L	Contact Tip 1.2mm M8x10x30 CuCrZr
43	EA3216	Nozzle 16mm
44	LTF31180*	Gun Neck 180°
	LTF3245	Gun Neck 45°

*Denotes Standard Build

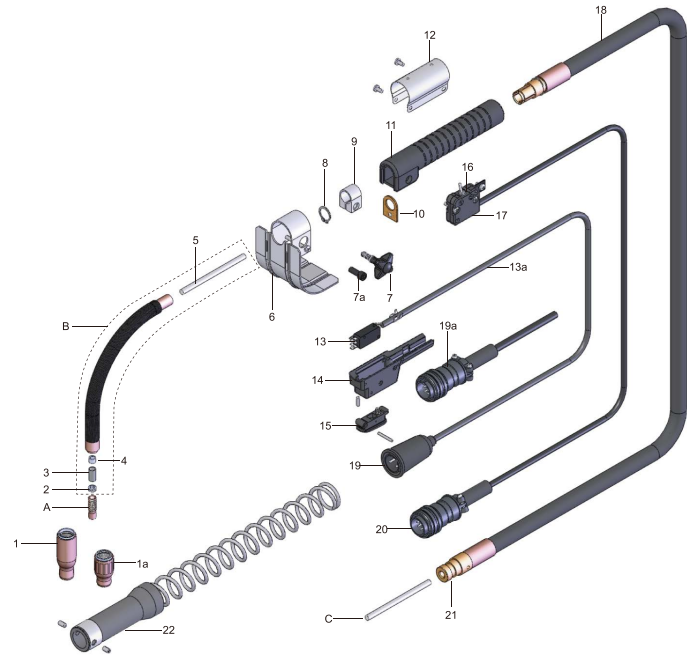
Self Shield Flux Core Gun

• K1150

- Rating: 450A

- Duty cycle: 60%

- Wire size: Ø2.0-3.0mm



Contact Tips

No.	Part Number	Description
A	ZB4120	Contact Tip 5/64"/2.0mm Ecu
	ZB4124*	Contact Tip 3/32"/2.4mm Ecu
	ZB4127	Contact Tip 7/64"/2.7mm Ecu
	ZB4130	Contact Tip 1/8"/3.0mm Ecu
	ZB4120L	Contact Tip 5/64"/2.0mm CuCrZr
	ZB4124L	Contact Tip 3/32"/2.4mm CuCrZr
	ZB4127L	Contact Tip 7/64"/2.7mm CuCrZr
	ZB4130L	Contact Tip 1/8"/3.0mm CuCrZr

Gun Neck

No.	Part Number	Description
B	ZF4225	Gun Neck 25°
	ZF4245	Gun Neck 45°
	ZF4290*	Gun Neck 95°

Liners

No.	Part Number	Description
C	ZR3224-3*	Steel Liner 1.6-2.4mmx3mm
	ZR4230-3	Steel Liner 2.4-3.0mmx3mm

Components

No.	Part Number	Description
1	ZN4101*	Insulated Nozzle 2 3/4" Stickout
1a	ZN4102	Insulated Nozzle Stickout
2	ZF4211	Locking Screw
3	ZF4212	Steel Insert
4	ZF4213	Ceramic Insert
5	ZF4214	Liner
6	ZK4001	Handle Protector
7	ZT3001	Locking Screw
7a	ZT3002	Socket Head Cap Screw
8	Q1316	Ring
9	ZM3001	Clamp
10	ZH4010	Splatter Shield
11	ZH3101	Handle

Components

No.	Part Number	Description
12	ZJ3014	Switch Housing
13	Q712	Switch, OMRON, Waterproof
13a	ZJ3015	Switch Assembly W/Plug
14	ZJ3001	Trigger Housing Assembly
15	ZJ3011	Trigger
16	Q723	Bottom Switch
17	ZJ3013	Attenuating Switch
18	ZL4130	Cable Assembly 3m
19	LV0002*	2 Pin Plug (LN-7,8,9,25)
19a	ZV0005	5 Pin Plug (LN-7,8,9,25)
20	ZV3004	4 Pin Plug
21	ZU3001	Lincoln Fitting
22	ZH3201	Insulator Sleeve W/Spring

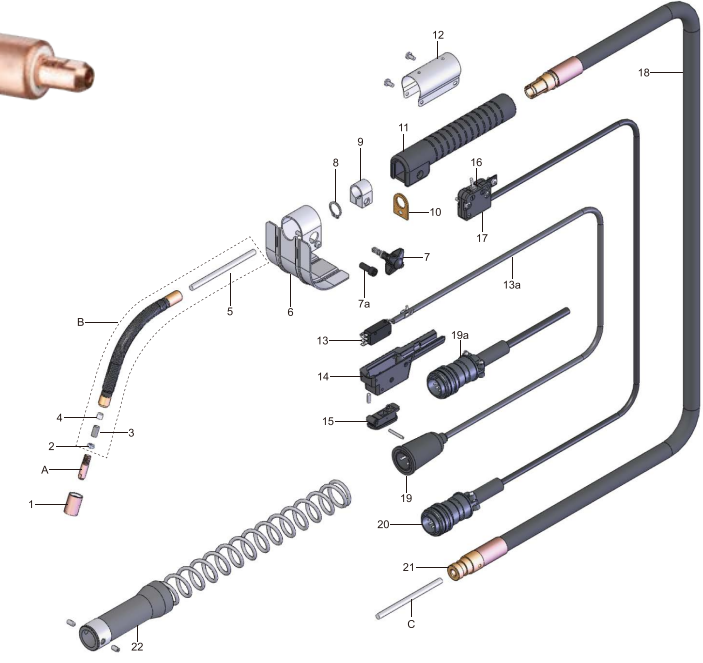
*Denotes Standard Build

• K1260

- Rating: 350A

- Duty cycle: 60%

- Wire size: Ø1.0-2.4mm



Contact Tips

No.	Part Number	Description
A	ZB3116	Contact Tip 1.6mm Ecu
	ZB3118	Contact Tip 1.8mm Ecu
	ZB3120*	Contact Tip 2.0mm Ecu
	ZB3124	Contact Tip 2.4mm Ecu
	ZB3116L	Contact Tip 1.6mm CuCrZr
	ZB3118L	Contact Tip 1.8mm CuCrZr
	ZB3120L	Contact Tip 2.0mm CuCrZr
	ZB3124L	Contact Tip 2.4mm CuCrZr

Gun Neck

No.	Part Number	Description
B	ZF3230	Gun Neck 30°, 195mm
	ZF3267*	Gun Neck 67°, 165mm
	ZF3290	Gun Neck 90°, 195mm

Liners

No.	Part Number	Description
C	ZR3224-3*	Steel Liner 1.6-2.4mmx3mm

Components

No.	Part Number	Description
1	ZN3101	Thread Protector
2	ZF3211	Locking Screw
3	ZF3212	Steel Insert
4	ZF3213	Ceramic Insert
5	ZF32163	Liner 163mm
	ZF32133*	Liner 133mm
6	ZK3001	Handle Protector
7	ZT3001	Locking Screw
7a	ZT3002	Socket Head Cap Screw
8	Q1316	Ring
9	ZM3001	Clamp
10	ZH3011	Splatter Shield
11	ZH3101	Handle
12	ZJ3014	Switch Housing

Components

No.	Part Number	Description
13	Q712	Switch, OMRON, Waterproof
13a	ZJ3015	Switch Assembly W/Plug
14	ZJ3001	Trigger Housing Assembly
15	ZJ3011	Trigger
16	Q723	Bottom Switch
17	ZJ3013	Attenuating Switch
18	ZL3130	Cable Assembly 3m
	ZL3230	Cable Assembly 3m
19	LV0002*	2 Pin Plug (LN-7,8,9,25)
19a	ZV0005	5 Pin Plug (LN-7,8,9,25)
	ZV3003	3 Pin Plug (LN-22,23)
20	ZV3004	4 Pin Plug
21	ZU3001	Lincoln Fitting
22	ZH3201	Insulator Sleeve W/Spring

*Denotes Standard Build

• Self Shield Flux Core Gun Gooseneck



Torch Model	ERP	Specification	Torch Model	ERP	Specification
K1260	17.0060	45°/9"	K1150	00.0204	25°/9"
	17.0061	45°/12"			
	17.0062	62°/9"			
	17.0063	62°/12"			
	17.0064	30°/9"			
	17.0065	30°/12"			
	17.0066	90°/9"			
	17.0067	90°/12"			
17.0068	15°/9"	17.0269	90°/9"		
Torch adaptor	Lincoln		Torch adaptor	Miller	

What is Welding Cable

Welding cables constructed as single-core insulated cables in a relatively large-diameter designed to be used to connect welding machines, welding electrode holders, earth clamps and automated welding heads. Welding cables have great flexibility and are soft but have strong abrasion, heat and oil resistant insulation. They are equipped with a standard copper conductor.



• Size and rating chart

Welding Current	Duty Cycle	Total Length and Section of Cables			
		0-15m	15m-30m	30m-50m	50m-100m
100A	20%	10mm ²	16mm ²	25mm ²	50mm ²
125A	30%	10mm ²	16mm ²	25mm ²	50mm ²
150A	40%	16mm ²	16mm ²	25mm ²	50mm ²
180A	30%	25mm ²	25mm ²	25mm ²	50mm ²
200A	60%	25mm ²	25mm ²	35mm ²	50mm ²
250A	30%	35mm ²	35mm ²	50mm ²	50mm ²
300A	60%	35mm ²	50mm ²	50mm ²	70mm ²
350A	60%	50mm ²	50mm ²	70mm ²	95mm ²
400A	60%	50mm ²	70mm ²	95mm ²	120mm ²
500A	60%	70mm ²	70mm ²	95mm ²	120mm ²
600A	60%	95mm ²	95mm ²	120mm ²	150mm ²

• Jacket (Insulation of welding cable)

Common materials for insulation of welding cable are EPDM, Flexible PVC and CPE. All of these insulations are flexible and durable.

There are slight differences, for example:

- CPE insulation has a slightly higher flex temperature than the other two;
- EPDM is better a flexing application at lower temperatures;
- PVC is less flexible but has high resistance to cuts and tears.

• Color

Cables have different colors, such as black, red, orange, yellow, green and blue.



• Conductor

Copper and Aluminum can be the conductors of welding cable.

The main difference between aluminum and copper cables is the current carrying capacity and resistance. Aluminum cable has a lower current carrying capacity (by about 40%) and greater resistance (requiring 50% larger cross-sectional area on average) than the equivalent copper conductor.

Copper has greater conductivity compared to aluminum, it is more durable and less subject to corrosion, making many types of connections more secure.

Aluminum welding cable is three times lighter in weight than copper welding cable, it is much easier to be handled. For this reason, aluminum welding cables are more used in large size cables.



Dual Gauge Regulator



SPECIFICATIONS

Model	ERP	Gas Type	Inlet Voltage	Outlet Flowmeter	Outlet Pressure	Inlet Gauge
CPR-196T-AR	00.3173	AR/Mixed	N/A	0-50LPM	0.35MPa	280kg/4000psi
CPR-196T-CD		AR/Mixed	N/A	0-50LPM	0.35MPa	280kg/4000psi



SPECIFICATIONS

Model	ERP	Gas Type	Inlet Voltage	Outlet Flowmeter	Outlet Pressure	Inlet Gauge
CPR-0067	32.0067.03	AR/CO ₂	N/A	1-25LPM	0.4MPa	320kg/4500psi

CO₂ Regulator with Heater



SPECIFICATIONS

Model	ERP	Gas Type	Inlet Voltage	Outlet Flowmeter	Outlet Pressure	Inlet Gauge
CPR-199-36	00.0202	CO ₂	36V AC, 210W	1-25LPM	0.35MPa	280kg/4000psi
CPR-199-110	17.0197	CO ₂	110V AC, 210W	1-25LPM	0.35MPa	280kg/4000psi
CPR-199-220	17.0198	CO ₂	220V AC, 210W	1-25LPM	0.35MPa	280kg/4000psi

Argon Regulator



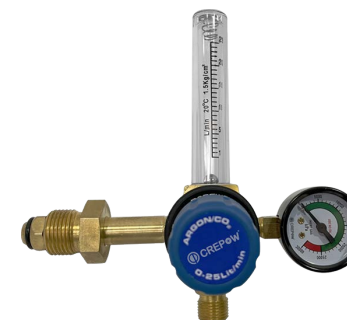
SPECIFICATIONS

Model	ERP	Gas Type	Inlet Voltage	Outlet Flowmeter	Outlet Pressure	Inlet Gauge
CPR-101-AR	00.5994	AR/Mixed	N/A	1-25LPM	0.35MPa	280kg/4000psi
CPR-101-CD		AR/Mixed	N/A	1-25LPM	0.35MPa	280kg/4000psi



SPECIFICATIONS

Model	ERP	Gas Type	Inlet Voltage	Outlet Flowmeter	Outlet Pressure	Inlet Gauge
CPR-100-AR	00.0201	AR/Mixed	N/A	1-25LPM	0.35MPa	250kg/3500psi
CPR-100-CD		AR/Mixed	N/A	1-25LPM	0.35MPa	250kg/3500psi



SPECIFICATIONS

Model	ERP	Gas Type	Inlet Voltage	Outlet Flowmeter	Outlet Pressure	Inlet Gauge
CPR-0049	32.0049	AR/CO ₂	N/A	1-25LPM	0.4MPa	320kg/4500psi

Note: All gas in and gas out connectors can be customized.

Dinse Style

• Cable Connector-Male



Model	Amp. Max (A)	Cable Section (mm ²)
10-25	200	10-25
35-50	315	35-50
35-70	400	35-70
70-95	500	70-95

• Cable Connector-Female



Model	Amp. Max (A)	Cable Section (mm ²)
10-25	200	10-25
35-70	400	35-70
70-95	500	70-95

• Cable Connector-Female



Model	Amp. Max (A)	Cable Section (mm ²)
10-25	200	10-25
35-50	315	35-50
35-70	400	35-70
70-95	500	70-95

• Cable Connector-Male



Model	Amp. Max (A)	Cable Section (mm ²)
10-25	200	10-25
35-50	315	35-50
35-70	400	35-70
70-95	500	70-95

• Cable Connector-Socket



Model	Amp. Max (A)	Cable Section (mm ²)
35-70	315	35-50

Thai Style

• Cable Connector-Female



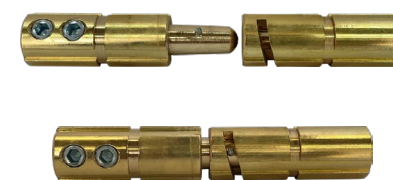
Model	Amp. Max (A)	Cable Section (mm ²)
10-25	200	10-25
35-70	315	35-50

• Cable Connector-Male



Model	Amp. Max (A)	Cable Section (mm ²)
10-25	200	10-25
35-70	315	35-50

Japanese Style



Model	Cable Section (mm ²)	Amp. Max
300A	20-50	300
500A	50-70	500
800A	70-95	800

Italian Type



SPECIFICATIONS

Model	ERP	Cable Section (mm ²)	Max. Current (A)	Weight (g)
PEC200H	00.0303.02	6-25	200	240
PEC400H	00.2726	10-50	400	270
PEC600H	00.2727	10-50	600	430

German Type



SPECIFICATIONS

Model	ERP	Cable Section (mm ²)	Max. Current (A)	Weight (g)
DE200H	00.2720	6-25	200	240
DE300H	00.2721	6-25	300	460
DE400H	00.2722	10-50	400	460
DE500H	00.2723	10-50	500	460
DE600H	00.2724	16-70	600	560

American Type



SPECIFICATIONS

Model	ERP	Cable Section (mm ²)	Max. Current (A)	Weight (g)
AC200H	00.2728	6-25	200	360
AC300H	00.1778.02	6-25	300	460
AC500H	00.1779.02	10-25	500	560
AC800H	00.2731	16-95	800	560

Japanese Type



SPECIFICATIONS

Model	ERP	Cable Section (mm ²)	Max. Current (A)	Weight (g)
JP300H	00.2610	5-25	300	350
JP500H	00.4510	5-75	500	400
JP800H	00.4510.01	10-95	800	500

Twist Type



SPECIFICATIONS

Model	ERP	cable section (mm ²)	Max. Current (A)	Weight (g)
AU300H	98.0671	10-50	300	440

Carbon Arc Gouging



SPECIFICATIONS

Model	Cable Section (mm ²)	Length (m)	Max. Current (A)	Weight (g)
Gouging-600A	18	1.3	600	450
Gouging-800A	22	1.3	800	640
Gouging-1000A	35	1.8	1000	820
Gouging-86-1	22	1.3	800	880

Earth Clamp



SPECIFICATIONS

Model	ERP	Size(mm)	Max. Current (A)	Weight (g)
BC150A	00.4061.02	150*115*30	150A	140



SPECIFICATIONS

Model	Size(mm)	Max. Current (A)	Weight (g)
NL300A	172*76*30	300	140
NL500A	205*100*38	500	340
NL800A	239*86*40	800	360



SPECIFICATIONS

Model	Size(mm)	Max. Current (A)	Weight (g)
AC300A	170*73*29	300	180
AC500A	183*84*31	500	250
AC800A	234*100*31	800	430

150A



Brass-2264

SPECIFICATIONS

Model	ERP	cable section (mm ²)	Max. Current (A)	Weight (g)
Brass-2264	00.2264	6-25	150	150

300A



Brass-0161



Brass-0162



Brass-0104



Brass-0146



Brass-0207



Brass-0208



Brass-0164



Brass-0165

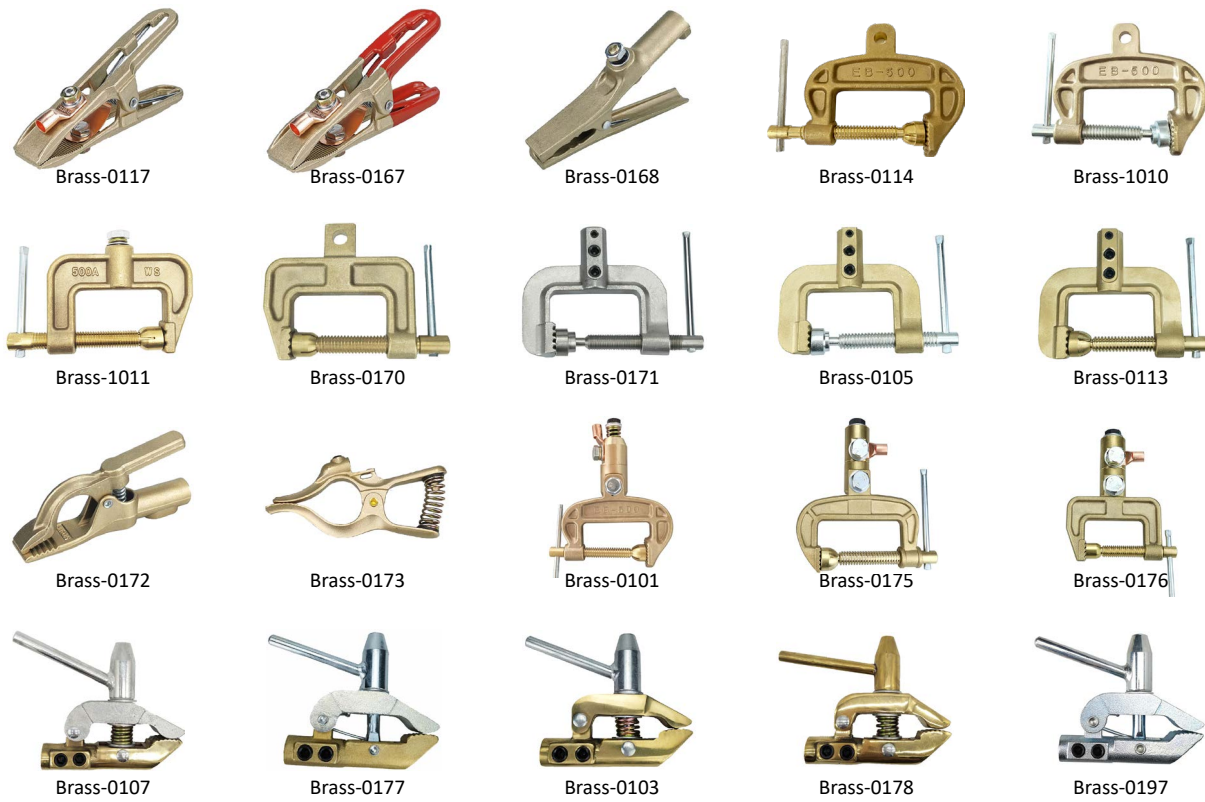


Brass-0166

SPECIFICATIONS

Model	Max. Current (A)	Max. Clamp Distance (mm)	Weight (g)
Brass-0161	300	45	275
Brass-0162	300	45	267
Brass-0104	300	59	693
Brass-0146	300	40	371
Brass-0207	300	41.53	460
Brass-0208	300	41.53	460
Brass-0164	300	28	376
Brass-0165	300	28	369
Brass-0166	300	35	380

500A



SPECIFICATIONS

Model	Max. Current (A)	Max. Clamp Distance (mm)	Weight (g)
Brass-0117	500	59	600
Brass-0167	500	59	615
Brass-0168	500	40	644
Brass-0114	500	66	1060
Brass-1010	500	/	1042
Brass-1011	500	45	424
Brass-0170	500	45.25	417
Brass-0171	500	58	650
Brass-0105	500	58	706
Brass-0113	500	58	715
Brass-0172	500	35	750
Brass-0173	500	40	552
Brass-0101	500	66	2015
Brass-0175	500	/	1103
Brass-0176	500	/	889
Brass-0107	500	37	664
Brass-0177	500	37	661
Brass-0103	500	37	619
Brass-0178	500	37	629
Brass-0197	500	37	640

600A



SPECIFICATIONS

Model	Max. Current (A)	Max. Clamp Distance (mm)	Weight (g)
Brass-0109	600	40	837
Brass-0102	600	36	780

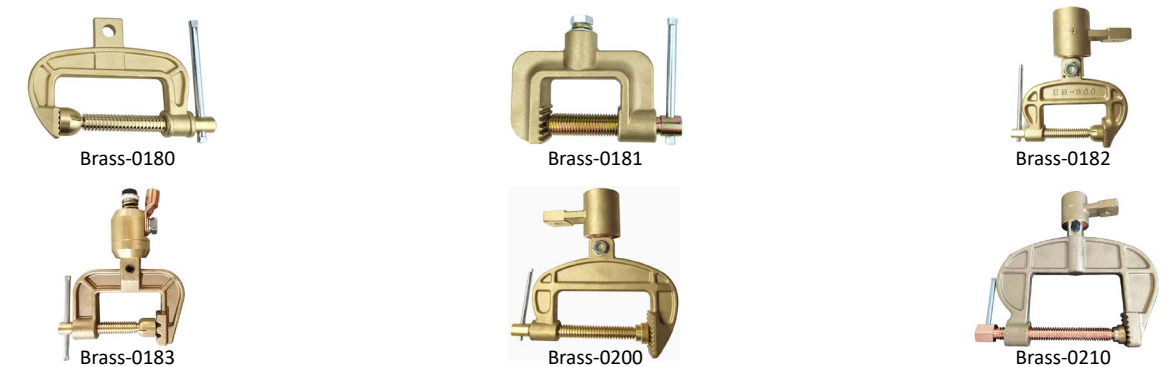
800A



SPECIFICATIONS

Model	Max. Current (A)	Max. Clamp Distance (mm)	Weight (g)
Brass-0179	800	37.5	1055
Brass-0174	800	37.99	2000
Brass-0209	800	37	1054

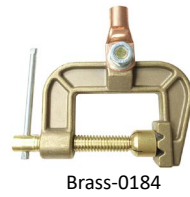
1000A



SPECIFICATIONS

Model	Max. Current (A)	Max. Clamp Distance (mm)	Weight (g)
Brass-0180	1000	70	657
Brass-0181	1000	65	1247
Brass-0182	1000	66	3000
Brass-0183	1000	56	2250
Brass-0200	1000	115	4105
Brass-0210	1000	140	6317

1200A

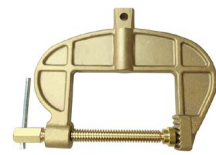


Brass-0184

SPECIFICATIONS

Model	Max. Current (A)	Max. Clamp Distance (mm)	Weight (g)
Brass-0184	1200	56	1428

1500A



Brass-0185



Brass-0186



Brass-0187



Brass-0188



Brass-0212



Brass-0213

SPECIFICATIONS

Model	Max. Current (A)	Max. Clamp Distance (mm)	Weight (g)
Brass-0185	1500	140	4500
Brass-0186	1500	115	2275
Brass-0187	1500	140	8500
Brass-0188	1500	115	6230
Brass-0212	1500	135	5000
Brass-0213	1500	140	8000

2000A



Brass-0199

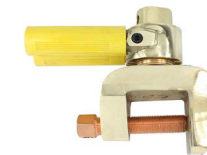


Brass-0211

SPECIFICATIONS

Model	Max. Current (A)	Max. Clamp Distance (mm)	Weight (g)
Brass-0199	2000	140	11000
Brass-0211	2000	110	8622

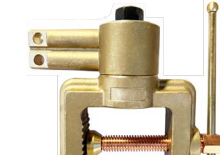
2500A



Brass-0189



Brass-0190



Brass-0202

SPECIFICATIONS

Model	Max. Current (A)	Max. Clamp Distance (mm)	Weight (g)
Brass-0189	2500	77	7300
Brass-0190	2500	110	10300
Brass-0202	2500	/	10600

Brass Rotary Device for Earth Clamp



Brass Connector-0201



Brass Connector-0191



Brass Connector-0192



Brass Connector-0193



Brass Connector-0194



Brass Connector-0195



Brass Connector-0153



Brass Connector-0196

SPECIFICATIONS

Model	Max. Current (A)	Size (mm)	Weight (g)
Brass Connector-0201	500	97	443
Brass Connector-0191	500	140	923
Brass Connector-0192	1000	110	950
Brass Connector-0193	1000	110*120	1830
Brass Connector-0194	1000	103*120	1829
Brass Connector-0195	1000	115*120	1889
Brass Connector-0153	1500	140*170	4000
Brass Connector-0196	2000	165	6500

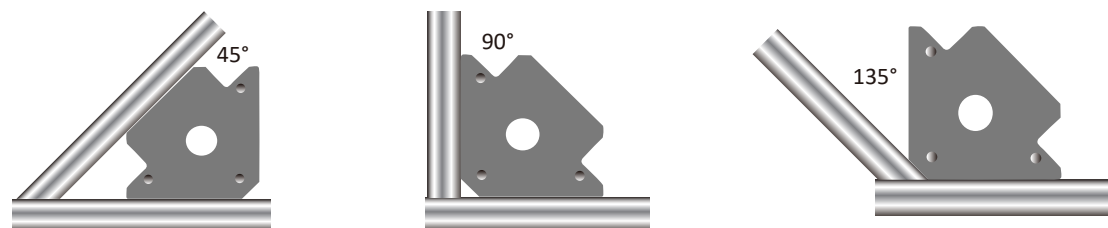
What is A Welding Magnet

- Welding magnets hold workpieces in place during welding. Magnets are quicker to set up and accurate holding of sheet stock or tubing. They attract to workpieces; it allows both hands free to safely work before welding.
- Welding magnets are made of high-quality materials, they have excellent durability and longevity.
- Various angles available from 30°, 45°, 60°, 75°, 90°, 135°, 180°.



How to Use Welding Magnet

The welding magnets have great usability in the welding process, they act as the third hands and help welders to focus on the welding completely. Take the metals which are designed to be welded, choose the welding magnets according to pull force, shape, size and the material, lead welding magnets to hold the metals together at a particular angle before welding.



Different Shapes and Types

There are different models and shapes and hand force for options according to different welding applications, such as Standard (Always on) and Switchable (ON/OFF), Arrow shape and Multi-Angle shape.

Standard (Always on) Welding Magnets

- **Arrow Magnetic Welding Angle**
 - Holding force includes 11.3kg/25lbs, 22.7kg/50lbs, 34kg/75lbs, 45.4kg/100lbs, 54.5kg/120lbs, 75kg/165lbs
 - Holds metals at 45°, 90°, 135°, 180°
- **Multi-Angle Welding Magnet**
 - Holding force includes 11.3kg/25lbs, 22.7kg/50lbs, 34kg/75lbs,
 - Holds metals at 30°, 45°, 60°, 75°, 90°, 120°



• Outside Corner Welding Magnet

- Creates 90° corner by holding it from outside.
- Holds metals at 15°, 45°, 60°, 90°, 240°



• Magnet Earth Clamp

- Strong clamping force 15kg/33lbs(200Amps) and 30kg/66lbs (500Amps)
- Holds strong earth in all positions
- Easy to move and connect



• Magnet Torch Holder

- Used for safe storage of the MIG/TIG torch during breaks in the welding process
- Fixed mounting with the screw and magnetic stand
- Protects the torch head and parts, reduces the wear damages
- Holding force 30kg/66lbs

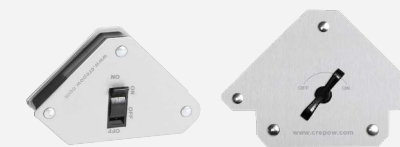


Switchable ON/OFF Welding Magnet

When you use switchable welding magnet, you do not worry about the magnet attracting other work tools in tool box when you pack it away. Simply turn on the magnet when you are ready to work, then turn it off when you are done.

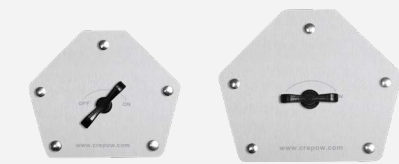
• Arrow Switchable Welding Magnet

- Holding force includes 13.6kg/30lbs, 22.7kg/50lbs, 25kg/75lbs, 50kg/110lbs
- Holds metals at 45°, 90°



• Switchable Multi-Angle Welding Magnet

- Holding force includes 25kg/75lbs, 55kg/121lbs
- Holds metals at 45°, 90°, 135°, 180°



Surface Treatment

- Painted (Colors can be chosen according to needs)
- Zinc plating
- Nickel plating
- Tin plating
- Other metal plating

Standard (Always on) Welding Magnets

• Arrow Magnetic Welding Angle



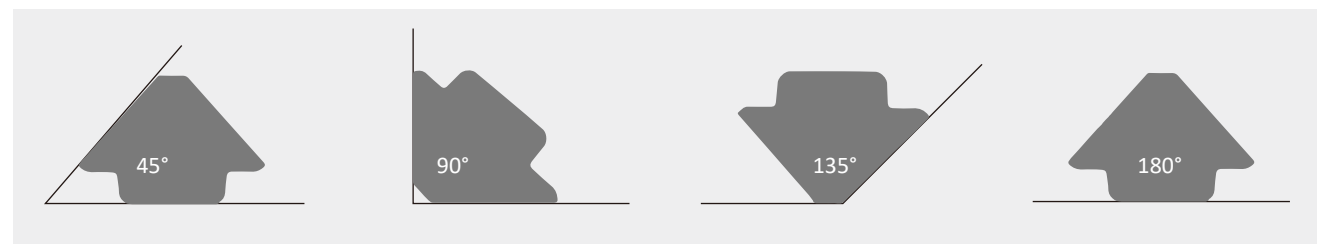
SPECIFICATIONS

Model	Powerful Magnets	Angle Range	Sizes (L*W*H)	Net Weight
CPA-11.3	11.3 kg(25 lb)	45°/90°/135°/180°	120*84*14 mm	330 g
CPA-22.7	22.7 kg(50 lb)	45°/90°/135°/180°	156*103*17 mm	630 g
CPA-34	34 kg(75 lb)	45°/90°/135°/180°	190*122*25 mm	1080 g
CPA-45.4	45.4 kg(100 lb)	45°/90°/135°/180°	212*142*25 mm	1550 g



SPECIFICATIONS

Model	Powerful Magnets	Angle Range	Size	Net Weight
CPA-25	25 kg(55 lb)	45°/90°/135°/180°	120*81*15 mm	400 g
CPA-55	34 kg(75 lb)	45°/90°/135°/180°	163*110*20 mm	860 g
CPA-75	45.4 kg(100 lb)	45°/90°/135°/180°	198*132*26 mm	1420 g



• Multi-Angle Welding Magnet



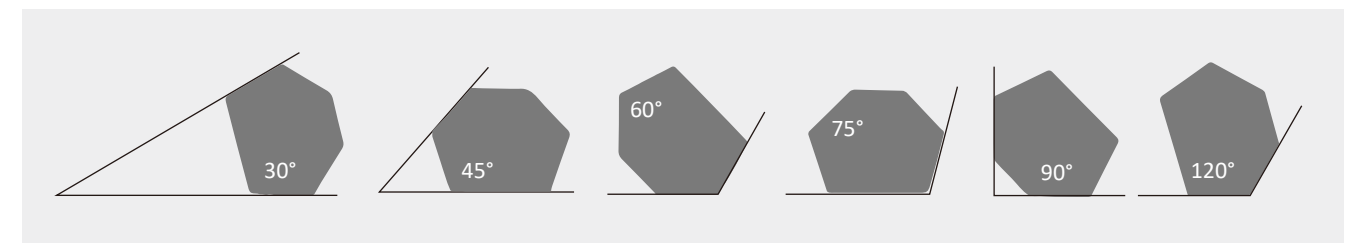
SPECIFICATIONS

Model	Powerful Magnets	Angle Range	Size	Net Weight
CPM-11.3	11.3 kg(25 lb)	30°/45°/60°/75°/90°/120°	97*64*14 mm	280 g
CPM-22.7	22.7 kg(50 lb)	30°/45°/60°/75°/90°/120°	119*97*17 mm	550 g
CPM-34	34 kg(75 lb)	30°/45°/60°/75°/90°/120°	145*110*25 mm	1000 g



SPECIFICATIONS

Model	Powerful Magnets	Angle Range	Size	Net Weight
CPM-55	55 kg(121 lb)	30°/45°/60°/75°/90°/120°	120*102*75*20 mm	850 g
CPM-75	75 kg(165 lb)	30°/45°/60°/75°/90°/120°	150*125*100*30 mm	1350 g

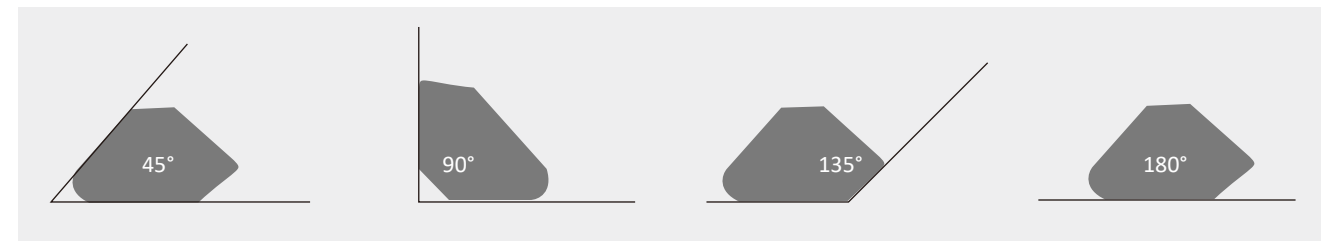


• Mini Welding Magnet



SPECIFICATIONS

Model	Powerful Magnets	Angle Range	Size	Net Weight
CPA-4	4 kg(9 lb)	45°/90°/135°/180°	72*43*12 mm	100 g

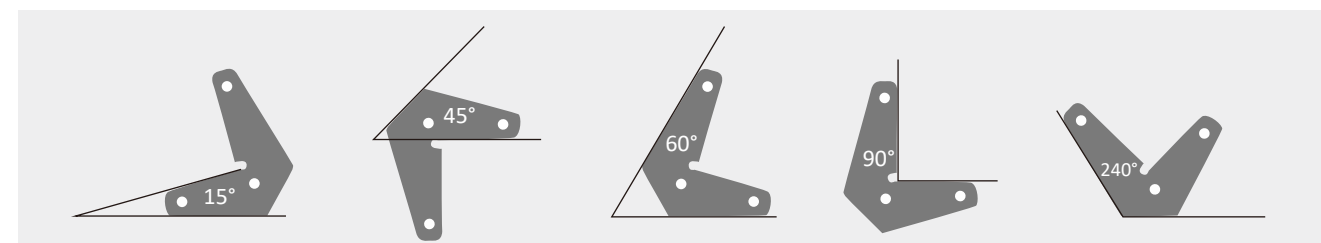


• Outside Corner Welding Magnet



SPECIFICATIONS

Model	Powerful Magnets	Angle Range	Size	Net Weight
Right Angle-9	9 kg(20 lb)	30°/60°/90°	84*53*16 mm	133 g
Bevel Angle-9	9 KG(20 lb)	15°/45°/60°/90°/240°	95*83*16 mm	176 g



• Magnet Earth Clamp



SPECIFICATIONS

Model	Powerful Magnets	Basic Diameter	Current	Net Weight
CPEC-15	15 kg(33 lb)	60 mm	200 Amps	240 g
CPEC-30	30 kg(66 lb)	90 mm	500 Amps	600 g

• Magnet Torch Holder



SPECIFICATIONS

Model	Powerful Magnets	Basic Diameter	Height	Net Weight
CPMT-30	30 kg(66 lb)	80 mm	140 mm	720 g
CPTT-30	30 kg(66 lb)	85 mm	160 mm	650 g

• Adjustable Welding Magnet

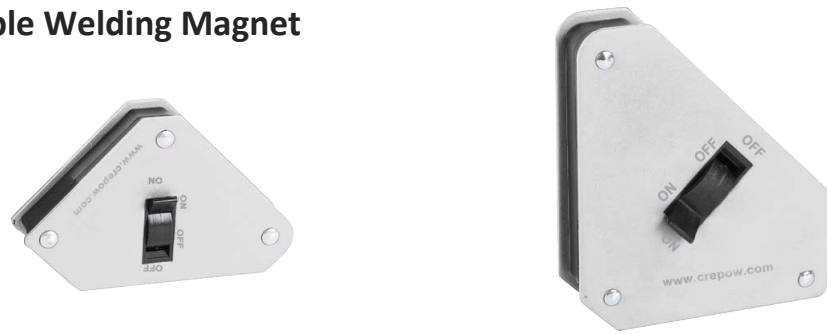


SPECIFICATIONS

Model	Powerful Magnets	Angle Range	Size
Adjustable-100	100 kg(220 lb)	0-180°	85*65*24 mm

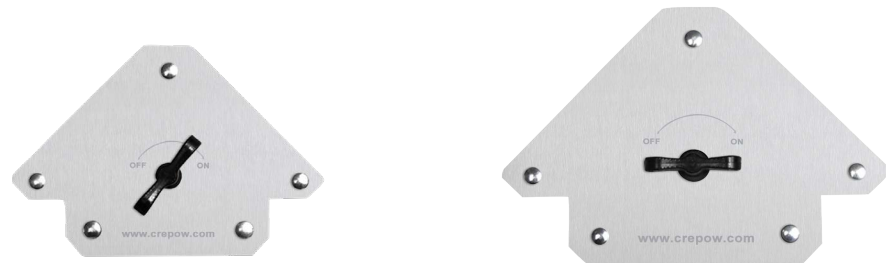
Switchable ON/OFF Welding Magnet

• Arrow Switchable Welding Magnet



SPECIFICATIONS

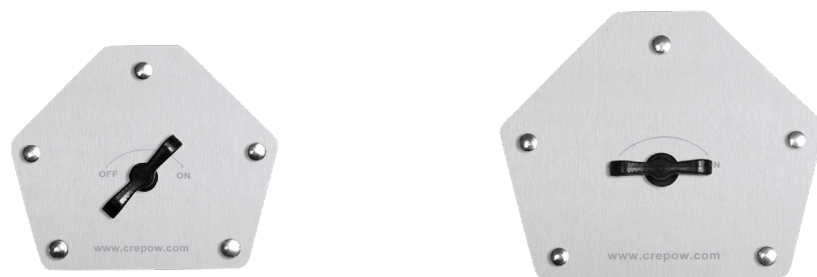
Model	Powerful Magnets	Angle Range	Size	Net Weight
CPAS-13.6	13.6 kg(30 lb)	45°/90°	140*82*26 mm	500 g
CPAS-22.7	22.7 kg(50 lb)	45°/90°	192*118*32 mm	1100 g



SPECIFICATIONS

Model	Powerful Magnets	Angle Range	Size	Net Weight
CPAS-25	25 kg(55 LB)	45°/90°/135°/180°	170*116*22 mm	852 g
CPAS-50	50 kg(110 lb)	45°/90°/135°/180°	203*140*24 mm	1310 g

• Switchable Multi-Angle Welding Magnet



SPECIFICATIONS

Model	Powerful Magnets	Angle Range	Size	Net Weight
CPMS-25	25 kg(55 lb)	30°/45°/60°/75°/90°/120°	133*114*22 mm	785 g
CPMS-55	55 kg(121 lb)	30°/45°/60°/75°/90°/120°	158*135*24 mm	1235 g

FEATURES

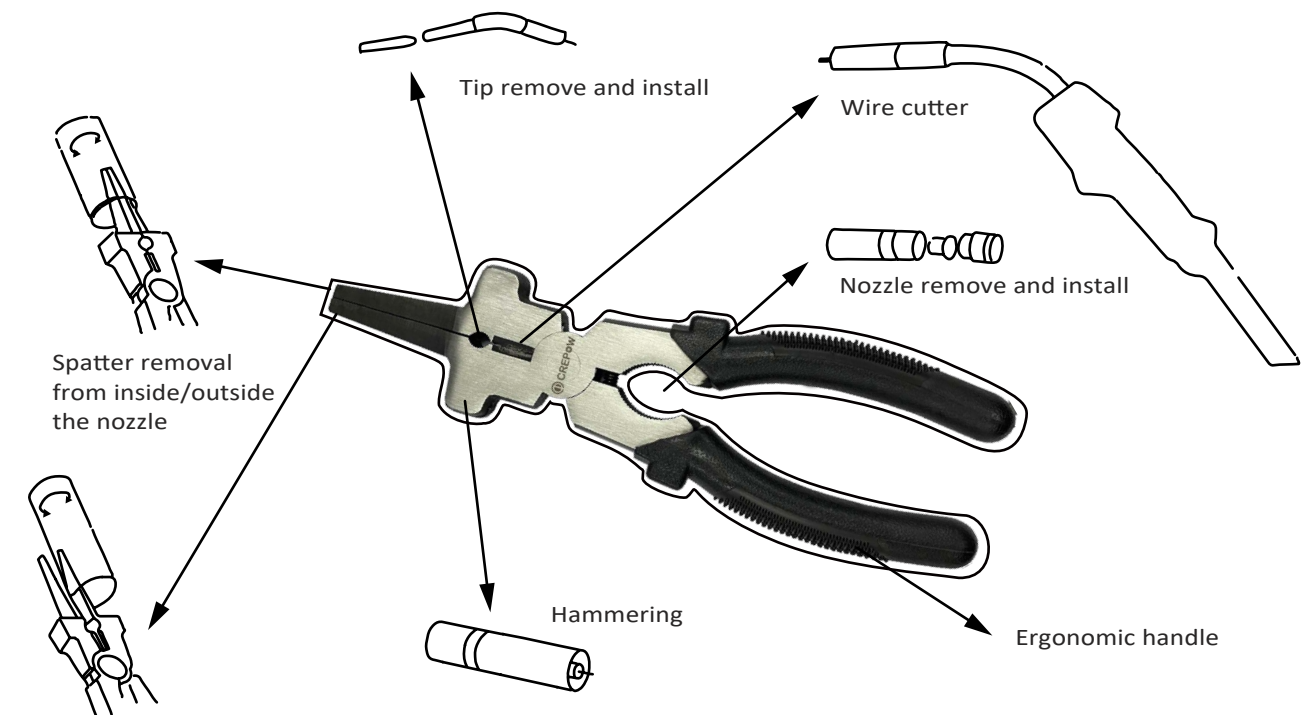
- Laser logo available
- Strength and durability
- Spring-loaded design
- Premium non-slip grip handles
- High quality industrial 45 Carbon steel
- Multi-function for industrial



SPECIFICATIONS

Model	ERP	Sizes	Weight
MIG Pliers	32.0128.01	8 inch	330g

MULTI-FUNCTION



Welding Hammer



Basic Chipping Hammer/Brush

Chipping Hammer

Pro-Chipping Hammer/Brush

SPECIFICATIONS

Model	ERP	Size	Net Weight
Basic Chipping Hammer/Brush	32.0132.02	179*78*20 mm	90g (0.19 lb)
Chipping Hammer	32.0151.02	282*153*40 mm	520g (1.14 lb)
Pro-Chipping Hammer/Brush	32.0145.03	280*145*40 mm	540g (1.19 lb)

Engineers Chalk Pencil and Holder

- Widely used in all aspects of the material
- High quality soapstone
- Easy to carry and use
- 125*5mm Engineers chalk
- Package list: 1*Holder
4*Engineers chalk pencil



SPECIFICATIONS

Model	ERP	Size	Net Weight
Engineers Chalk Pencil & Holder	00.6174.02	125*12.5*5mm	110g (0.24 lb)

Carry Case



Model	ERP	Size	Dimension (mm)	
			Inside	Outside
Carry Box-0199	00.0199.01	Small	330*195*140	358*265*143
	00.0199.02	Middle	350*240*157	373*310*165
	00.0199.03	Large	395*275*160	418*345*168



Model	ERP	Size	Dimension (mm)	
			Inside	Outside
Carry Box-2424	00.2424.02	Small	375*305*138	385*388*150
	00.2424.01	Middle	300*400*165	380*410*175
	00.2424.03	Large	525*330*170	530*413*182



Model	ERP	Size	Dimension (mm)	
			Inside	Outside
Carry Box-0200	00.0200.01	Middle	460*347*162	485*402*178
	00.0200.02	Large	570*440*160	600*500*180



Model	ERP	Size	Dimension (mm)	
			Inside	Outside
Carry Box-2204	00.2204.02	ONE SIZE	495*350*190	570*410*210



Model	Size	Dimension (mm)	
		Inside	Outside
Carry Box-5013	ONE SIZE	563*437*274	626*495*303

What are Abrasives

An abrasive is a material, often a mineral which is used to shape or finish a workpiece through rubbing which leads to parts of the workpiece being worn away by friction. Abrasives are classified according to hardness, grain size and abrasive material. Each of these variables affects the final result. Choosing the right abrasive is essential to achieve the expected result.



Type of Abrasives

Abrasives are mainly divided into two categories: Natural and Synthetic. The synthetic abrasive is further then split into two subcategories: boned and coated abrasive.

● Natural abrasives

Natural abrasives are a rough material found in the earth and used in the molding or abrading of other products. They usually contain Calcite, Diamond, Iron oxide, Sand, Sandstone, Powered feldspar, of raw materials or chemical precursors.

● Synthetic abrasives

Synthetic abrasives are the result of extensive refining, like Borazon, ceramic, aluminum oxide, dry ice, glass powder, steel abrasive, silicon carbide, slags.

- Bonded abrasives

Bonded abrasives are composed of an abrasive material that is contained within the matrix. Bonded abrasives are usually made into grinding wheels, cut off wheels, segments. Bonded types are used for many aspects of woodworking, metal finishing or cutting applications.



- Coated abrasives

Coated abrasives consist of backing material like paper, cloth, etc. they are covered with abrasive materials to provide perfection in coated. Coated abrasives are typically fastened to belts, sheets, plates and rolls.



Shape, Grain and Size of Abrasives

Different abrasive instruments correspond to different types of processing, and for this reason there are Discs, Wheels, Cutters and various files. They differ mainly in shape, grain and size.

- Choosing the right abrasive shape is essential for working a surface.



41 Cutting Wheel



42 Depressed Center Cutting Wheel



27 Grinding Wheel



Dish Shape Flap Disc



T27 Flap Disc



T29 Flap Disc

- The grit thickness of an abrasive affects the cleaning speed and the pattern produced. Abrasives with a grain between 8 and 16 are generally very rough, they are suitable for giving the surface a deep pattern. From 20 to 40 (Medium grain) abrasives are considered for general and very varies purposes. Finally the abrasives with grain from 120 up are those with a fine grain and are mainly used for finishing.
- Abrasives are also available in various sizes, so as to adapt to the instrument we have to choose the suitable size.

Applications of Abrasives

Abrasives are used in many industries from wood-working to metal work to cleaning. Abrasives are popular using for polishing, honing, drilling, lapping, grinding, buffing, cutting, sharpening and sanding.

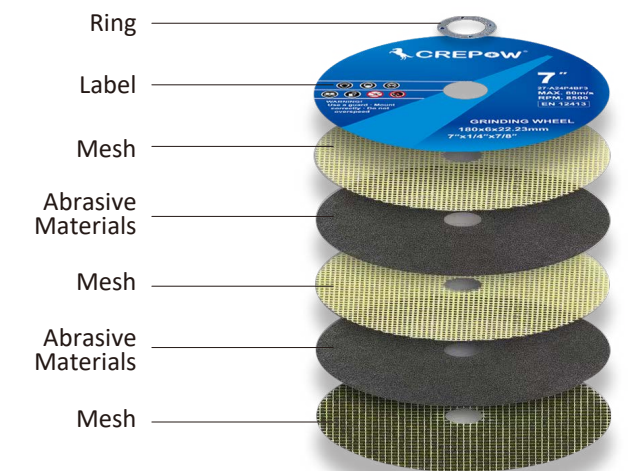
- Grinding and cutting-off wheels cut, grind, sand or finish metal, glass, wood, brick or concrete surfaces.
- Polishing and buffing abrasives leave a smooth, lustrous finish on a workpiece for an attractive appearance.
- Sandpaper is the common name for a variety of abrasive papers and cloth used on wood, plastics, plaster and metal. Sanding jobs vary from removal of old paint finishes and rust and rough shaping of wood stock to providing a final, silky-smooth surface. Sandpaper is made of abrasive particles glued to cloth backing.
- Abrasives accessories such as sharpening stones and abrasive dressing products help keep tools ready for the next job.

Product Composition



DOUBLE LAYERS MESH THICKENING

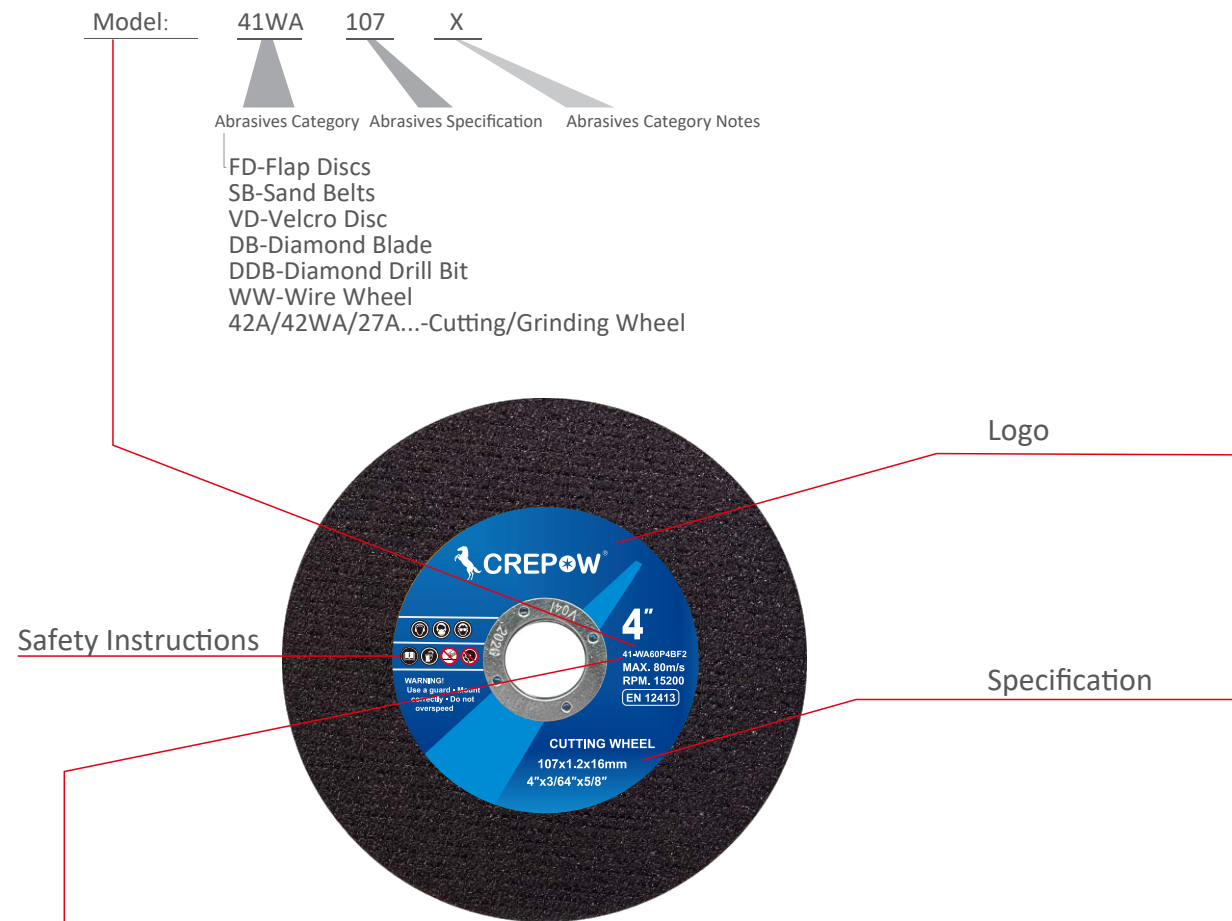
FINE RAW SAND
Strengthen safety and wear resistance of mesh



THREE LAYERS MESH THICKENING

DURABLE GRINDING WHEEL
Strengthen safety and wear resistance of mesh

Label of Abrasives



Explanation of Designation

Symbol	1	2	3	4	5	6	7	8
	Type	Abrasive Kind	Grain Size	Grade	Organise No.	Bond	Reinforced	Max. Speed
Example	41	A	30	P	4	B	F ₂	RPM15200

41 Cutting Wheel	A - Brown Aluminium Oxide	Coarse 12 14	P Soft G Soft 1 H Soft 2 J Soft 3	4 5 6	V - Vitrified B - Resin	80m/s 70m/s 50m/s	F Single Layer Mesh F₂ Double Layers Mesh F₃ Three Layers Mesh F₄ Four Layers Mesh
42 Depressed Center Cutting Wheels	WA- White Aluminium Oxide	16 60 20 70 24 80	K Medium Soft 1 L Medium Soft 2 M Medium 1 N Medium 2		R - Rubber		
27 Grinding Wheel	C- Black Silicon Carbide GC- Green Silicon Carbide - Mixed Grain ZA - Zirconia Alumina	30 90 36 100 46 120 54 150 Fine	P Medium Hard 1 Q Medium Hard 2 R Medium Hard 3 S Hard 1 T Hard 2				



Cutting Wheels

• Super Thin Cutting Wheels

Durable Type

Shape: 

Material: White Aluminium Oxide (41WA)

Usage: For cutting of stainless steel, precious metal such as steel alloy



SPECIFICATIONS

Model	Size (mm)	Inch	Shape	package (pcs/ctn)	Gross Weight (kg)	Dimensions (cm)	Max. Speed
41WA1051.2	105*1.2*16	4"x1/21"x5/8"	Flat	600	14	35*34*13	80 M/S
41WA1071.2	107*1.2*16	4"x3/64"x5/8"	Flat	600	14	38*22*22	80 M/S
41WA1151.2	115*1.2*22.23	4.5"x1/21"x7/8"	Flat	600	16	36*32*13	80 M/S
41WA1251.2	125*1.2*22.23	5"x1/21"x7/8"	Flat	600	19	39*32*14	80 M/S
41WA1501.6	150*1.6*22.23	6"x1/16"x7/8"	Flat	400	27	32*32*22	80 M/S
41WA1801.6	180*1.6*22.23	7"x1/16"x7/8"	Flat	200	20	38*22*20	80 M/S
41WA2302	230*2*22.23	9"x1/12"x7/8"	Flat	100	20	29*25*25	80 M/S

• Depressed Center Cutting Wheels

Shape: 

Material: Brown Aluminium Oxide (42A)

Usage: For cutting and grinding of ordinary metals, carbonsteel, steely alloy, weld seams etc.



SPECIFICATIONS

Model	Size (mm)	Inch	Shape	package (pcs/ctn)	Gross Weight (kg)	Dimensions (cm)	Max. Speed
42A1003	100*3*16	4" x 1/8"x5/8"	Depressed	400	22	36*22*21	80 M/S
42A1153	115*3*22.23	4.5" x 1/8" x 7/8"	Depressed	200	16	25*18*25	80 M/S
42A1253	125*3*22.23	5" x 1/8" x 7/8"	Depressed	200	22	27*20*27	80 M/S
42A1503	150*3*22.23	6" x 1/8" x 7/8"	Depressed	200	13	32*23*16	80 M/S
42A1803	180*3*22.23	7" x 1/8" x 7/8"	Depressed	100	21	38*24*19	80 M/S
42A2303	230*3*22.23	9" x 1/8" x 7/8"	Depressed	50	16	25*19*25	80 M/S

• Cutting Wheels For Stainless Steel

Stainless Steel Special

Shape: 

Material: White Aluminium Oxide (41WA)

Usage: 41WA cut stainless steel



SPECIFICATIONS

Model	Size (mm)	Inch	Shape	package (pcs/ctn)	Gross Weight (kg)	Dimensions (cm)	Max. Speed
41WA1002.5	100*2.5*16	4" x 1/10"x 5/8"	Flat	360	18	38*22*22	80 M/S
41WA3052.5	305*2.5*25.4	12"x 1/12"x 1"	Flat	25	11	31*31*8	80 M/S
41WA3552.8	355*2.8*25.4	14" x 1/9"x1"	Flat	30	13	36*36*8	80 M/S
41WA4003	400*3*25.4	16" x 1/8"x1"	Flat	25	23	41*41*9	80 M/S

• **Cutting Wheels For Metal**

Durable Type

Shape: 

Material: Brown Aluminium Oxide (41A)

Usage: For cutting of stainless steel, precious metal such as steel alloy



SPECIFICATIONS

Model	Size (mm)	Inch	Shape	package (pcs/ctn)	Gross Weight (kg)	Dimensions (cm)	Max. Speed
41A1052	105*2*16	4"x1/12"x5/8"	Flat	600	24	38*22*22	80 M/S
41A1003	100*3*16	4"x1/8"x5/8"	Flat	400	23	38*22*22	80 M/S
41A1152	115*2*22.23	4.5"x1/12"x7/8"	Flat	200	11	25*25*14	80 M/S
41A1252	125*2*22.23	5"x1/12"x7/8"	Flat	200	13	27*27*14	80 M/S
41A1253	125*3*22.23	5"x1/8"x7/8"	Flat	200	17	27*18*27	80 M/S
41A1502	150*2*22.23	6"x1/12"x7/8"	Flat	400	35	32*32*28	80 M/S
41A1503	150*3*22.23	6"x1/8"x7/8"	Flat	200	20	33*33*17	80 M/S
41A1802	180*2*22.23	7"x1/12"x7/8"	Flat	200	23	38*25*20	80 M/S
41A1803	180*3*22.23	7"x1/8"x7/8"	Flat	100	19	36*20*20	80 M/S
41A2303	230*3*22.23	9"x1/8"x7/8"	Flat	50	16	25*25*18	80 M/S
41A2553	255*3*25.4	10"x1/8"x1"	Flat	50	20	26*26*18	80 M/S
41A3053	305*3*25.4	12"x1/8"x1"	Flat	25	13	31*31*9	80 M/S
41A3553	355*3*25.4	14"x1/8"x1"	Flat	25	17	36*36*9	80 M/S
41A4003	400*3*25.4	16"x1/8"x1"	Flat	25	23	41*41*9	80 M/S

Grinding Wheels

• **Grinding Wheels For Metal**

Durable Type

Shape: 

Material: Brown Aluminium Oxide (27A)

Usage: 27WA/A grinding steel, cast steel, stainless steel and other metals.



SPECIFICATIONS

Model	Size (mm)	Inch	Shape	package (pcs/ctn)	Gross Weight (kg)	Dimensions (cm)	Max. Speed
27A1004	100*4*16	4"x4/25"x5/8"	Depressed	200	21	38*22*22	80 M/S
27A1006	100*6*16	4"x1/4"x5/8"	Depressed	200	21	38*22*22	80 M/S
27A1156	115*6*22.23	4.5"x1/4"x7/8"	Depressed	100	16	25*21*25	80 M/S
27A1256	125*6*22.23	5"x1/4"x7/8"	Depressed	100	17	27*21*27	80 M/S
27A1506	150*6*22.23	6"x1/4"x7/8"	Depressed	100	23	42*31*16	80 M/S
27A1806	180*6*22.23	7"x1/4"x7/8"	Depressed	60	21	38*24*19	80 M/S
27A2306	230*6*22.23	9"x1/4"x7/8"	Depressed	30	20	26*25*25	80 M/S

• **Stainless Steel Grinding Wheels**

Durable Type

Shape: 

Material: White Aluminium Oxide (27WA)

Usage: 27WA/A grinding steel, cast steel, stainless steel and other metals.



SPECIFICATIONS

Model	Size (mm)	Inch	Shape	package (pcs/ctn)	Gross Weight (kg)	Dimensions (cm)	Max. Speed
27WA1004	100*4*16	4"x4/25"x5/8"	Depressed	200	21	38*22*22	80 M/S
27WA1006	100*6*16	4"x1/4"x5/8"	Depressed	200	21	38*22*22	80 M/S
27WA1156	115*6*22.23	4.5"x1/4"x7/8"	Depressed	100	16	25*21*25	80 M/S
27WA1256	125*6*22.23	5"x1/4"x7/8"	Depressed	100	17	27*21*27	80 M/S
27WA1506	150*6*22.23	6"x1/4"x7/8"	Depressed	100	23	42*31*16	80 M/S
27WA1806	180*6*22.23	7"x1/4"x7/8"	Depressed	60	21	38*24*19	80 M/S
27WA2306	230*6*22.23	9"x1/4"x7/8"	Depressed	30	20	26*25*25	80 M/S

Flap Discs

• **Brown Aluminium Oxide(Fiberglass Backing)**

Shape: 

Material: Brown Aluminium Oxide (A)

Usage: Mainly used for grinding and polishing of metal, weld wood



SPECIFICATIONS

Model	Size (mm)	Inch	Grit	Shape
FD100A50	100*16	4"x5/8"	50	Depressed
FD115A60	115*22	4/5"x7/8"	60	Depressed
FD125A60	125*22	5"x7/8"	60	Depressed
FD150A60	150*22	6"x7/8"	60	Depressed
FD180A60	180*22	7"x7/8"	60	Depressed

• **Flap Disc (T29)**

Shape: 

Material: Zirconia Alumina (ZA)

Usage: Mainly used for grinding and polishing of stainless steel parts.



SPECIFICATIONS

Model	Size (mm)	Inch	Grit	Shape
FD100ZA60T29	100*16	4"x5/8"	60	Depressed
FD115ZA80T29	115*22	4/5"x7/8"	80	Depressed
FD125ZA80T29	125*22	5"x7/8"	80	Depressed
FD150ZA80T29	150*22	6"x7/8"	80	Depressed
FD180ZA80T29	180*22	7"x7/8"	80	Depressed

• **Flap Disc (T27)**

Shape: 

Material: White Aluminium Oxide (WA)

Usage: Mainly used for grinding and polishing of stainless steel parts.



SPECIFICATIONS

Model	Size (mm)	Inch	Grit	Shape
FD100WA60T27	100*16	4"x5/8"	60	Depressed
FD115WA80T27	115*22	4/5"x7/8"	80	Depressed
FD125WA80T27	125*22	5"x7/8"	80	Depressed
FD150WA80T27	150*22	6"x7/8"	80	Depressed
FD180WA80T27	180*22	7"x7/8"	80	Depressed

• **Dish Shape Flap Disc**

Shape: 

Material: Calcined Gauze A

Usage: Stainless steel coarse grinding and polishing



SPECIFICATIONS

Model	Size (mm)	Grit	Shape
FD1004650	100*45 pages	50	Depressed
FD1004680	100*45 pages	80	Depressed
FD10046120	100*45 pages	120	Depressed
FD10046240	100*45 pages	240	Depressed
FD10046320	100*45 pages	320	Depressed

Sand Belts

• **Brown Aluminium Oxide**

Usage: High durability , high tensile strength, long service life for grinding of the wood, metal, glass, plastic and stone.



SPECIFICATIONS

Model	Size (mm)	Inch	Grit
SB25533A	25*533	1"x21"	36-320
SB75457A	75*457	3"x18"	36-320
SB75533A	75*533	3"x21"	36-320
SB100533A	100*533	4"x21"	36-320
SB100610A	100*610	4"x24"	36-320
SB13102620A	1310*2620	51.5"x103"	36-320

• **White Aluminium Oxide**

Usage: High grinding removal rate, good grind ability, water-proof, oil-proof, long operating life, more safe. It is used to grind and polish stainless steel, cast iron, bronze, wood, etc.



SPECIFICATIONS

Model	Size (mm)	Inch	Grit
SB10330WA	10*330	1"x13"	36-320
SB25533WA	25*533	1"x21"	36-320
SB75457WA	75*457	3"x18"	36-320
SB75533WA	75*533	3"x21"	36-320
SB100533WA	100*533	4"x21"	36-320
SB100610WA	100*610	4"x24"	36-320
SB502100WA	50*2100	2"x84"	36-320

• **Black Silicon Carbide**

Usage: High durability , high tensile strength, long service life for grinding of the wood, metal, glass, plastic and stone.



SPECIFICATIONS

Model	Size (mm)	Inch	Grit
SB25533C	25*533	1"x21"	36-320
SB75457C	75*457	3"x18"	36-320
SB75533C	75*533	3"x21"	36-320
SB100533C	100*533	4"x21"	36-320
SB100610C	100*610	4"x24"	36-320
SB13102620C	1310*2620	51.5"x103"	36-320

• **Pure Cotton White Aluminium Oxide Cloth**

Model: SB01

Abrasives: White Aluminium Oxide

Bond: R/R

Cloth: Pure cotton cloth

Application: For grinding of stainless steel and general metal, apply to process sand belt, flap disc, sand disc.

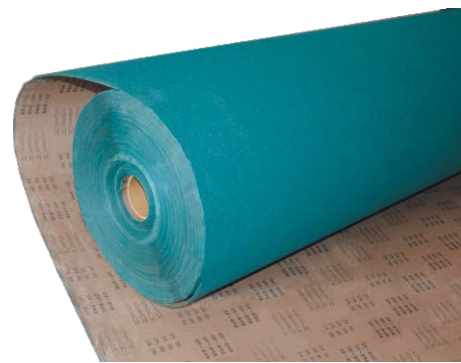


• **Fused Alumina Zirconia Cloth**

Model: SB02

Characteristics: Semi-flexible backing, very strong sanding power, dry sanding only.

Application: For grinding of carbon steel, casting, heat-treated steel, golf-head, solid wood.



• **Brown Aluminium Oxide Cloth**

Model: SB03

Abrasives: Brown Aluminium Oxide

Bond: R/R

Cloth: Pure cotton cloth

Application: For grinding of general metal, apply to process sand belt.



• **High Fused Brown Aluminium Oxide Cloth**

Model: SB04

Characteristics: Semi-flexible backing, very strong sanding power, dry sanding only.

Application: For grinding of carbon steel, casting, heat-treated steel, golf-head, solid wood.



Velcro Disc

• **Hook And Loop Fastener Sanding Disc**



SPECIFICATIONS

Model	Size (mm)	Inch	Grit	Shape	package (pcs/box)	package (pcs/ctn)	Dimensions (cm)
VD1255P36	125	5"	P36	Flat	100	1200	38*28*28
VD1255P40	125	5"	P40	Flat	100	1200	38*28*28
VD1255P60	125	5"	P60	Flat	100	1200	38*28*28
VD1255P80	125	5"	P80	Flat	100	1200	38*28*28
VD1255P100	125	5"	P100	Flat	100	1200	38*28*28
VD1255P120	125	5"	P120	Flat	100	1200	38*28*28
VD1255P180	125	5"	P180	Flat	100	1200	38*28*28
VD1255P240	125	5"	P240	Flat	100	1200	38*28*28
VD1255P320	125	5"	P320	Flat	100	1200	38*28*28

Felt Wheel

• **Wool Polishing Wheel**



SPECIFICATIONS

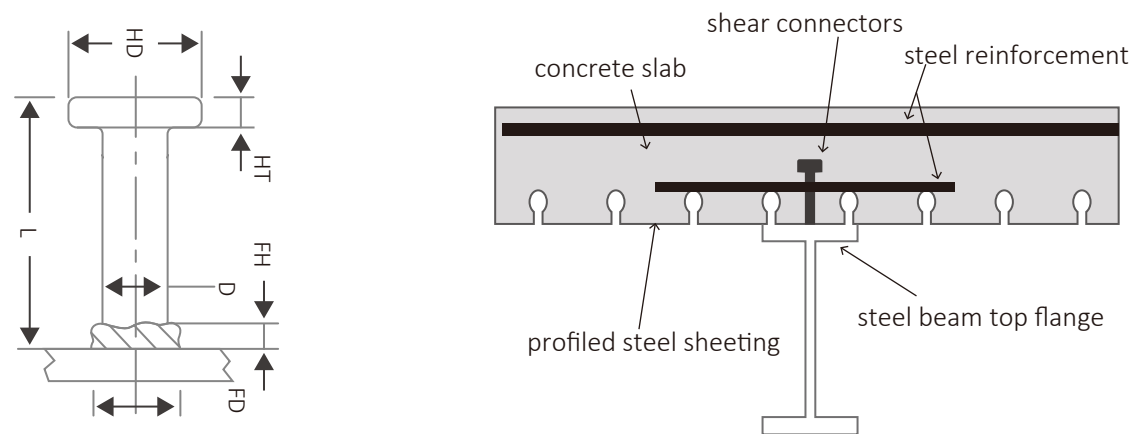
Model	Size (mm)	Inch	Shape	package (pcs/ctn)	Dimensions (cm)
FW80J	80*16	3-1/7"x5/8"	Depressed	100	46*19*10
FW100J	100*16	4"x5/8"	Depressed	100	50*20*11
FW125J	125*22	5"x7/8"	Depressed	200	65*27*22

What are the Shear Studs

Shear studs are components used to ensure proper shear transfer between steel girders and composite slab. Shear studs are typically used in constructions such as steel composite bridges, military equipment and commercial buildings as well.

Shear studs are simple and economical tools and aid quality construction in many ways. They can be welded to a flat surface or to the inside or outside of an angle.

In stud welding, shear studs are used to secure framed building by creating a shear connection between steel and concrete. These fasteners secure beams and resist loading between concrete and steel components in a composite construction. They provide strong and reliable fastening that is imperative in many infrastructure applications.



Advantages of Shear Studs

- Shear studs are quick and easy to weld into structures, they provide equal shear strength in all directions.
- Shear studs do not significantly obstruct the process of slab reinforcement.
- There is better compaction of concrete around the shear connectors, offering more strength to the structure itself.
- Cost-effective production in large quantities and many different sizes.
- High ductility, considerable increase in bearing capacity.
- Firm welds produced by stud welding.
- Application by trained operators-no highly qualified welders required.

Shear Studs Size

Standard: EN ISO 13918

Application: Steel construction

Type: Shear studs

Type of welding: Stud welding



SPECIFICATIONS

Model	Bar Diameter (mm)	Length before weld (mm)	Weight (kg/1000Pcs)
M13*80	13	80	104
M13*105	13	105	129
M16*55	16	55	121
M16*80	16	80	161
M16*105	16	105	199
M16*130	16	130	238
M16*150	16	150	270
M19*80	19	80	217
M19*95	19	95	248
M19*100	19	100	259
M19*105	19	105	271
M19*130	19	130	324
M19*150	19	150	368
M19*180	19	180	434
M19*240	19	240	565
M22*100	22	100	342
M22*130	22	130	432
M22*150	22	150	490
M22*180	22	180	580
M25*105	25	105	500
M25*130	25	130	596
M25*150	25	150	673
M25*180	25	180	789

Custom lengths are available

Technical Data

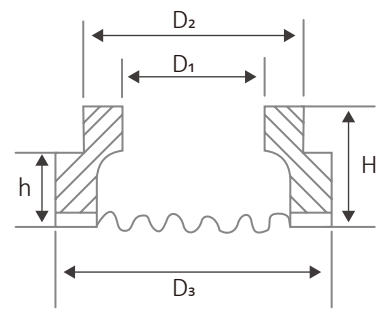
• Ceramic Ferrules for Shear Studs

Ceramic ferrules are essential parts of the standard drawn arc stud welding, the shear studs are inserted into the center of hole of the ceramic ferrules. The ferrules will be pressed on the welding surface by ceramic ferrules holder with the force of spring device inside of the stud welding gun. Ceramic ferrules are disposable items, and they will be removed once welding finished.

• Ceramic Ferrules Functions

- The ferrules help to shield the arc and spatter from the operator.
- The ferrules minimize the atmosphere that the flux must purge.
- The ferrules form the molten metal into the fillet.
- The ferrules vents allow weld gases to escape.

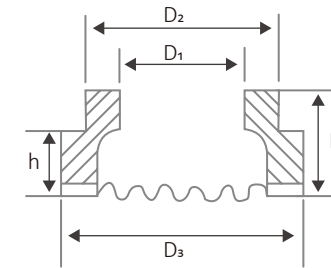
UF Type



SPECIFICATIONS

Model	D ₁ ^{+0.5} ₋₀	D ₂ ±1	D ₃ ±1	h	H
UF 6	6.2	9.5	11.5	4.7	8.7
UF 8	8.2	11	15	4.7	8.7
UF 10	10.2	15	17.8	5.2	10
UF 12	12.2	16.5	20	6	10.7
UF 13	13.1	20	22.2/26"	6.5	11
UF 15	15.3	20	26	3.6	7.5
UF 16	16.3	26	30	9.5	13
UF 19	19.4	26	30.8	14	16.7
UF 22	22.8	30.7	39	14	18.6
UF 25	26	35.5	41	16.5	21

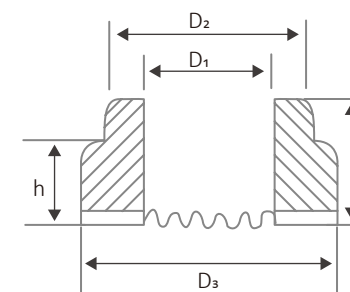
PF Type



SPECIFICATIONS

Model	D ₁ ^{+0.5} ₋₀	D ₂	D ₃	h	H
PF 6	5.6	8.5	11.5	3.3	6.5
PF 8	7.4	11.5	15	4.5	6.5
PF 10	9.2	15	17.8	4.5	8.5
PF 12	11.1	16.5	20	6.5	9
PF 16	15	20	26	7	11
PF 20	18.6	30.7	33.8	8	10
PF 24	22.4	30.7	38.5	14	18.5
PF-12-2	11.1	20	23.8	3.3	6.5

RF Type

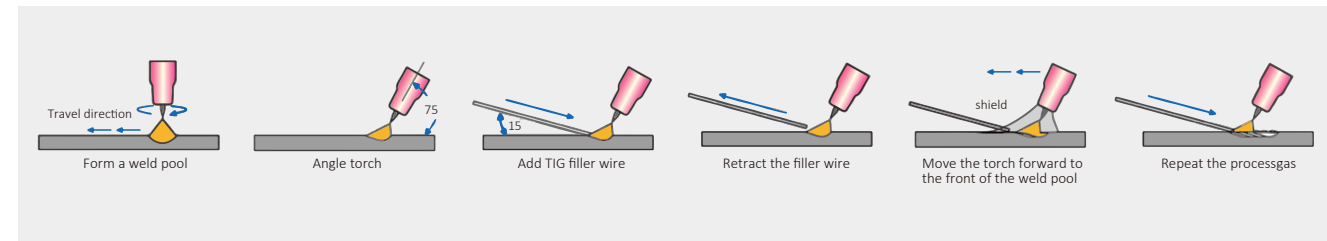


SPECIFICATIONS

Model	D ₁ ^{+0.4} ₋₀	D ₂ ±1	D ₃ ±1	h	H
RF 6	6.2	9.5	12.2	6	10
RF 8	8.2	12	15.3	5.5	9
RF 10	10.2	15	18.5	7.5	11.5
RF 12	12.2	17	20	8	13
RF 16	16.3/14"	20.5/26.2"	26.5/32.5"	10.8/4.5"	15.3/8.8"
RF 20	17.5/20.3"	26.2/28.5"	32	5/11.5"	9/22"
RF 24	21/24.3"	30.4	36	6/12"	12/25"

Non-consumable Tungsten Electrode

Tungsten is used in this process since this rate, metallic element intrinsically has a high melting temperature when compared to other metals. Tungsten offers excellent electrical conductivity without being consumed. Though, erosion can still occur on the tip during the shielded metal arc welding procedure.



Tungsten electrodes can also be alloyed to improve their properties depending on the weld type. There are some common examples as below:



• Thoriated Tungsten Electrode (WT20/Red)

Thoriated Tungsten Electrode is the most commonly used electrodes today, it is often been used for DC welding of carbon steel, stainless steel and titanium alloys.

The comprehensive performance of Thoriated Tungsten Electrode is very good. The electron emission is strong and the electron work function is 2.7eV, it can facilitate the arc starting, increase arc stability and improve current-carrying capacity of the rod. Furthermore, thoriated tungsten electrode can bear long time working with high current load ability and stable arc.

The only disadvantage of Thoriated Tungsten Electrode is slight radioactive pollution.



Model	Mark	Specification	Added Oxide	Mass Percent(%)	Impurities(%)	Tungsten(%)	Density	Work Function(eV)	Color Code
Thoriated Tungsten Electrodes	WT20/EWTh-2	1.0-10mm*150/175mm	ThO ₂	1.70-2.20	≤0.10	The rest	18.15	2.0-3.0	Red

• Pure Tungsten Electrode (WP/Green)

The Pure Tungsten Electrode is not typical for DC welding because it does not provide the strong arc starting comparing with Thoriated Tungsten Electrode. It is suitable for AC welding of Magnesium, aluminum and aluminum alloys.

The original Green Pure Tungsten Electrode contain at least 99.5% tungsten and have the highest consumption rate of all electrodes. It has very high melting point and boiling point, its evaporation and burning loss are less than other tungsten electrodes too.



Model	Mark	Specification	Added Oxide	Mass Percent(%)	Impurities(%)	Tungsten(%)	Density	Work Function(eV)	Color Code
Pure Tungsten Electrodes	WP/EWP	1.0-10mm*150/175mm	/	/	≤0.10	The rest	19.1-19.2	4.5	Green

• Lanthanum Electrodes (WL10/1% black, WL15/1.5% gold, WL20/2% blue)

The Lanthanum Tungsten Electrode becomes very popular in the welding because of its good welding performance. Its current conduction is most similar to Thoriated Tungsten Electrode but it has no radioactive pollution. So, the Lanthanum Tungsten Electrode is the best tungsten electrode to replace Thoriated Tungsten Electrode without any changes about welding process. It is very good used for both DC and AC welding and it is suitable for welding of non alloy steels and alloys of aluminum, steel, titanium, nickel, copper and magnesium, it is also to be used in micro-plasma welding.



Model	Mark	Specification	Added Oxide	Mass Percent(%)	Impurities(%)	Tungsten(%)	Density	Work Function(eV)	Color Code
Lanthanated Tungsten Electrodes	WL15/EWLa-1.5	1.0-10mm*150/175mm	La ₂ O ₃	0.8-1.70	≤0.10	The rest	18.40-18.80	2.6-3.0	Gold Black
	WL10/EWLa-1			1.80-2.20					
	WL20/EWLa-2								

• Zirconiated Tungsten Electrodes (WZ8/0.7-0.9% white, WZ3/0.15-0.5% brown)

Zirconiated Tungsten Electrode has nice welding performance under AC welding process. It retains a balled end during welding with good permeation and good corrosion resistance. The arc is more stable than Pure Tungsten electrodes, specially under high current load welding condition. It can not be replaced by another tungsten electrodes in terms of its excellent performance. This electrode is suitable for magnesium, aluminum and their alloy.



Model	Mark	Specification	Added Oxide	Mass Percent(%)	Impurities(%)	Tungsten(%)	Density	Work Function(eV)	Color Code
Zirconiated Tungsten Electrodes	WZ8/EWZr-8 WZ3/EWZr-1	1.0-10mm*150/175mm	ZrO ₂	0.15-0.90	≤0.10	The rest	18.4-18.8	2.5-3.0	White Brown

• Ceriated Tungsten Electrodes (WC20/2% cerium grey)

Ceriated Tungsten Electrode is a non-radioactive tungsten electrode alloyed with cerium oxide, it can improve the circumstance of labor protection. The compression strength of arc beam is narrower, more concentrated and more stable. It is very easy to generate arc and keep arc stable with low current. So Ceriated Tungsten Electrode is very popular with low current welding, specially used for orbital tube, pipe and small article welding, intermittent welding and quantitative welding.



Model	Mark	Specification	Added Oxide	Mass Percent(%)	Impuritiors(%)	Tungsten(%)	Density	Work Function(eV)	Color Code
Ceriated Tungsten Electrodes	WC20/EWCe-2	1.0-10mm*150/175mm	CeO ₂	1.80-2.20	≤0.10	The rest	18.20-18.30	2.6-2.8	Grey

• Yttriated Tungsten Electrode (WY20/1.8-2.2% blue)

Yttriated Tungsten Electrode produces a slim arc and a level of compression during welding, specially under medium and high current welding. It is mainly applied in miliary and astronautic industries.



Model	Mark	Specification	Added Oxide	Mass Percent(%)	Impuritiors(%)	Tungsten(%)	Density	Work Function(eV)	Color Code
Yttriated Tungsten Electrodes	WY20/EWY-2	1.0-10mm*150/175mm	Y ₂ O ₃	1.80-2.20	≤0.10	The rest	18.4-18.6	2.0-3.9	Blue

• Multi-compound Tungsten Electrode (WX/blue, WE3/purple, WXR3/green)

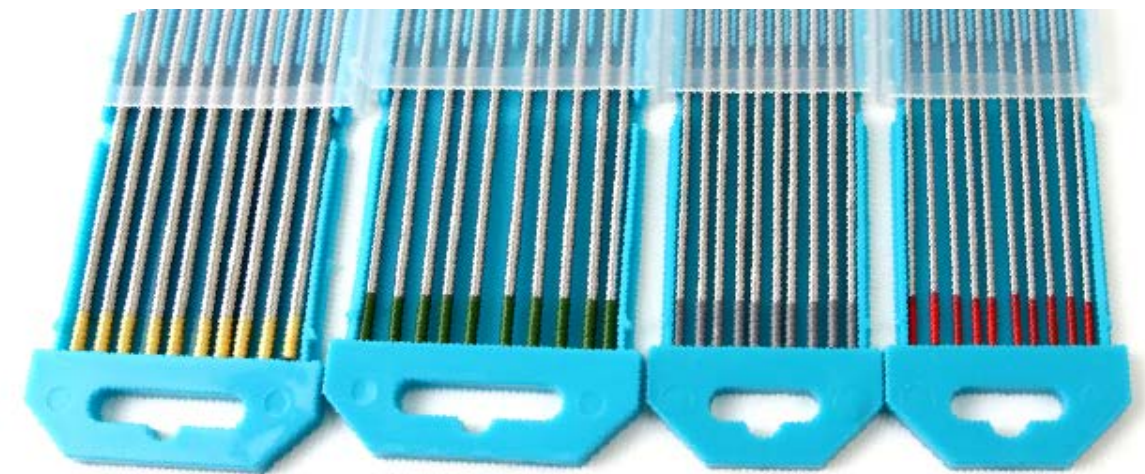
The performance of the new type of tungsten electrodes in welding can be improved very much by adding two or more rare earth oxides. The composite electrode has superior arc starting and better ignition than 2% Thoriated Tungsten Electrode, it starts faster and maintains a stable arc. This electrode can be used in both AC and DC welding process, and it runs colder and extend tip life, it is a good choice for the environment and safer for the work condition because it is a non-radioactive tungsten electrode.



Model	Mark	Specification	Added Oxide	Mass Percent(%)	Impuritiors(%)	Tungsten(%)	Density	Work Function(eV)	Color Code
Multi-compound Tungsten Electrodes	WX WE3/EWG WXR3	1.0-10mm*150/175mm	CeO ₂ La ₂ O ₃ Y ₂ O ₃ ZrO ₂ /etc	0.8-4.2	≤0.10	The rest	18.3-18.5	2.4-3.0	Turquoise Purple Grass Green

• Tungsten Electrodes diameter vs welding current

Diameter of Electrode		DC (A)				AC (A)	
		Straight Polarity(-)		Reverse Polarity(+)		Un balanced waves	Balanced waves
Inch	mm	pure	alloy	pure	alloy		
0.010	0.25	≤15	≤15	-	-	≤15	≤15
0.012	0.30	≤15	≤15	-	-	≤15	≤15
0.020	0.50	2-20	2-20	-	-	2-15	2-15
1/25	1.0	10-75	10-75	-	-	15-55	15-70
0.060	1.5	60-150	60-150	10-20	10-20	45-90	60-125
1/16	1.6	60-150	60-150	10-20	10-20	45-90	60-125
5/64	2.0	75-180	100-200	15-25	15-25	65-125	85-160
3/32	2.4	120-220	150-250	15-30	15-30	80-140	120-210
0.098	2.5	130-230	170-250	17-30	17-30	80-140	120-210
3/25	3.0	150-300	210-310	20-35	20-35	140-180	140-230
1/8	3.2	160-310	225-330	20-35	20-35	150-190	150-250
5/32	4.0	275-450	350-480	35-50	35-50	180-260	240-350
3/16	4.8	380-600	480-650	50-70	50-70	240-350	330-450
0.197	5.0	400-625	500-675	50-70	50-70	240-350	330-460
0.248	6.3	550-875	650-950	65-100	65-100	300-450	430-575
1/4	6.4	575-900	750-1000	70-125	70-125	325-450	450-600
5/16	8.0	-	-	-	-	-	650-830



Stainless Steel MIG Wire and TIG Rod

Aluminum MIG wire and TIG rod are produced to the highest quality standards to ensure ease of use and consistency.



SPECIFICATIONS

Model	Features	Diameters		Package	
		MIG Wire	TIG Rod	MIG Wire	TIG Rod
ER308L	For low carbon 18Cr-8Ni stainless such as ISI304. Excellent intergranular corrosion resistance. Better welding operation and fluidity, due to the increase of Si content.				
ER308H	Suitable for welding AISI 304 and 308H steel, good strength at high temperature due to higher carbon content				
ER308LSi	Weld ability and fluidity are better than 308L, good crack and corrosion resistance due to moderate ferrite content.				
ER316L	A general purpose wire for welding AISI 316L, and equivalent grades. It is suitable for welding molybdenum bearing austenitic stainless steels. Good resistance to pitting, acid and general corrosion.				
ER316LSi	A general purpose wire for welding AISI 316L, and equivalent grades. High silicon content for minimal spatter and weld metal fluidity.				
ER309L	Good crack and corrosion resistance due to moderate ferrite content, superior corrosion at 90C due to more Ni and Cr content.	0.6mm			
ER309LSi	Weld ability and fluidity are better than ER309L. ER309LSi can be used to weld materials with dissimilar ferrous metals and as a buffer layer before hard facing. It's also improves weld edge wetting.	0.8mm 0.9mm	1.0mm	D100 wire spool D200 wire spool	1m/ tube
ER310	For 29 Cr-9Ni stainless steel, dissimilar metal welding, it is suitable for clad steel, stainless steel sheet linings, alloy steel with high hardenability and used as buffer layer before hard facing.	1.0mm	2.0mm	D300 wire spool	
ER312	It is used to weld base metals of similar composition in wrought or cast form, steels-to-stainless steel and dissimilar steels.	1.2mm	2.4mm		
ER317	It is a high-alloyed, molybdenum-bearing, stainless steel welding wire is used to weld metals of similar composition and in areas of severe corrosion such as chemical and paper plants.	1.6mm			
ER347	It is used to weld base metals of similar composition. Addition of columbium reduces the possibility of chromium carbide precipitation and consequent intergranular corrosion.				
ER437Si	A general purpose wire for welding AISI321, 347 and equivalent grades, high silicon content for minimal spatter and weld fluidity.				
ER2209	A duplex type stainless steel wire used for welding 22CR/9Ni type materials, higher strength and excellent resistance to pitting and stress corrosion cracking.				
ER2594	A super duplex type wire used for welding of 25/10/5 materials. It has excellent resistance to intergranular corrosion, pitting and stress corrosion cracking in chloride environments.				

Note: Weight can be customized according to requirement.

Aluminum MIG Wire and TIG Rod

Stainless steel MIG wire and TIG rod are produced to the highest quality standards to ensure ease of use and consistency.

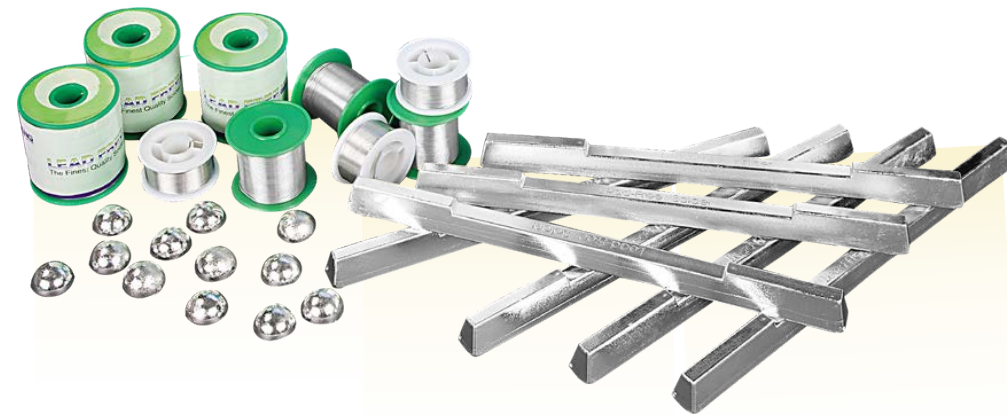


SPECIFICATIONS

Model	Features	Diameters		Package	
		MIG Wire	TIG Rod	MIG Wire	TIG Rod
ER4043	Aluminum silicon alloy is commonly used for welding on base materials and other heat treatable alloys. It is a soft alloy with good crack resistance and high penetration compared to other filler metals. It can be used for certain brazing applications and to weld on high silicon casts.				
ER4047	Aluminum magnesium manganese alloy commonly used for higher strength welding of base materials. It has higher columnar strength and uses less amperage. It enables to be used as brazing alloy on thin sections.	0.6mm 0.8mm	1.0mm	D100 wire spool	
ER5183	Aluminum magnesium manganese alloy commonly used for higher strength welding of base materials. It has higher columnar strength that uses less amperage.	0.9mm 1.0mm	1.6mm 2.0mm	D200 wire spool D300 wire spool	1m/ tube
ER5356	Aluminum magnesium alloy commonly used for higher strength welding of base materials. Higher columnar strength and uses less amperage.	1.2mm 1.6mm	2.4mm		
ER5554	Non heat treatable low magnesium manganese alloy used for base material especially in elevated temperature applications about 65°C				
ER5556	It is a high strength magnesium manganese alloy, it is commonly used for welding high strength base materials and provides good strength on base materials.				

Note: Weight can be customized according to requirement.

Crepow Solder products includes solder wire, solder bar and solder ball, and they can be Leaded or Lead free.

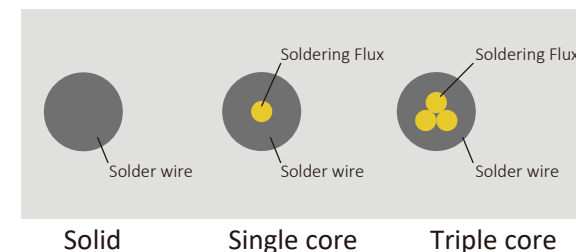


Soldering Wire



- **Features**
 - High performance soldering flux, fast melting speed, good fluidity and quick speed to coat with tin
 - Less spatter during soldering
 - Soldering flux is evenly distribution wit good continuity
 - High temperature strength
 - Good corrosion resistance.
 - Very little smoke and smell
 - Less risk of crack solder point cracked, improve the melting between corrosion copper surface and alloy
 - Less residues, no corrosion, high insulation resistance and free clean

Soldering Wire Types



- **Soldering wire diameter**
From 0.3mm to 5.0mm, weight can be customized according to needs
- **Applications**
Manual soldering
Automatic iron soldering
Electronic components repair or soldering

Soldering Bar



- **Applications**
Automatic wave soldering, mix substrate, general PCB wave soldering and other general wave soldering

Solder bar is an alloy of solder cast or extruded into bar form for melting into solder pots. Solder bar melted into solder pots can be a faster, more automated method of soldering then hand-soldering with solder wire.

- **Solder bar shape and size**
Size and weight can be customized according to needs

Tin Ball



- **Applications**
Tinplate, flux, organic synthesis, chemical production, alloy manufacturing, electronic industry or other industry such as electroplating, tin products, etc.

- **Features**
 - Uniform size
 - Bright surface
 - Purity of the structure close, no longer oxidation.
- **Tin Ball shape**
Spherical or hemispherical
- **Tin Ball diameter**
From 0.2mm to 0.76mm

Lead-Free Solder Products

The lead-free solder ranges are made though advanced smelting technology and strict production process, The lead-free products of whole ranges are met the requirement of environmental protection.

- **Lead-free Soldering range, melting point and features**

Range	Composition	Fusion Temperature °C	Features	Main Application
Sn-Cu	Sn-0.7Cu	227	Low melting point, low temperature, higher antioxidation property, good solder ability, bright solder surface	Manual soldering, wave soldering
	Sn-1.5Cu	227	Low melting point, high temperature, and belonging to high antioxidation solder, mainly used for the disposable soldering for the stripping of enameled wire	Manual soldering
	Sn-3.0Cu	227-300		
Sn-Cu-Ni-Ce	Sn-0.7Cu-0.1Ni-0.1Ce	227	Low melting point, good fluidity, bright solder joints and low cost.	Wave soldering
Sn-Ag-Cu	Sn-3.8Ag-0.7Cu	217-219	Low melting point, good fluidity and invasive ability, good ability of heat-resistant and high cost	Wave soldering, manual soldering, SMT Path
	Sn-3.0Ag-0.5Cu	217-220		
	Sn-0.3Ag-0.7Cu	217-227		
Sn-Zn	Sn-9Zn	198-200	Melting point is closed to Sn-Pb , but the wet ability and anti-oxidation effects are poorer	-
Sn-Sb	Sn-5Sb	240-243	High strength, good antioxidation property, inhibit metal compounds and improve the solder ability of solder joints	High temperature soldering
Sn-In	Sn-52In	118		-
Sn-Bi	Sn-58Bi	138	Good performance, but poor the creep property and tensile strength, applicable to special process with low temperature soldering	Wave soldering, manual soldering, SMT Path
Sn-Zn-Bi	Sn-8Zn-3Bi	190-197		Manual soldering, wave soldering
Sn	Sn99.99	232	Mainly used for handicraft and electric plating process	Electric plating

Tin-Lead Solder Products

• Tin Leaded Solder Alloy

Tin(%)	Lead(%)	Silver(%)	Other(%)	Solid phase temperature °C	Liquid phase temperature °C	Density g/cm3
100	0				232	7.28
95	5			183	222	7.42
90	10			183	213	7.55
85	15			183	205	7.7
80	20			183	199	7.85
75	25			183	192	8
70	30			183	186	8.16
65	35			183	184	8.33
63	37			183	183	8.4
60	40			183	191	8.5
55	45			183	200	8.68
50	50			183	212	8.87
45	55			183	227	9.07
40	60			183	238	9.28
35	65			183	247	9.5
30	70			183	257	9.72
25	75			183	268	9.96
20	80			183	280	10.21
15	85			183	288	10.7
10	90			275	302	10.75
5	95			308	312	11.06
0	100				327	11.35
16	32		58Bi	95	96	9.69
37	42		21Bi	120	152	9.16
49.7	41.8	0.5	8Bi	166	172	8.82
61.5	35.5	3		179	189	8.43
44	55	1		177	210	9.11
27	70	3		179	253	9.84
40	58		25b	185	231	9.17
5	92		35b	239	285	10.82
95		5		305	364	11.3

• Common Solder Types and Usage

Composition	Melting point °C	Working temperature °C	Density g/cm3	Main Application
63Sn/37Pb	183	240-250	8.4	Low melting point, good fluidity, widely used for the soldering of precision instruments, electrical and electronics, wave soldering and circuit board elements and aviation.
60Sn/40Pb	183-191	250-260	8.5	
55Sn/45Pb	183-200	260-280	8.68	
50Sn/50Pb	183-212	280-300	8.87	Mainly used for the soldering of appliance, auto electric parts and other general electronic products
45Sn/55Pb	183-227	280-320	9.07	
40Sn/60Pb	183-238	290-330	9.28	Hight melting point, widely used for soldering mechanical machine, lamp holder, auto water tank and the welding of cable connectors.

What is Personal Protective Equipment

It commonly referred to as "PPE", is protection from hazards that cause serious workplace injuries and illnesses, such as metal spatter, heat slogs, lighting and chemical smoke etc.

Why is PPE Important

Welding is an activity in hazardous working condition, it will expose many workers to health and safety risks every year in the world. Physical hazards that can cause burns, eyes damage, cuts, crushed toes and fingers during welding. Welding physical safety products are protected welders from physical welding hazards,

PPE Including as Below

- Head and eyes protection includes welding helmet, goggles, safety glasses, face shield and welding cap, those will protect welders from radiation, flying particles, debris, hot slag, sparks, intense light, irritation and chemical burns.
- Lungs (breathing) protection includes PAPR, it will protect welders from fumes and oxides.
- Body protection includes welding cloth, welding jacket, welding pants, welding apron and bibs, those will protect welders from heat, fires, burns and radiation.
- Feet and hands protection includes welding gloves, welding sleeves, leggings and welding boots, those will protect welders from electric shock, heat, burns and fires.
- Ears hearing protection includes fire resistant ear muffs and ear plugs, those will protect welders from noise.



Why the Eyes Protection Important

Eyes hazards can occur from the intense light and radiation which are produced by welding arc. Eye hazards could also occur from hot slag or other metal debris which can fly off from welding, cutting, gouging and grinding.

How to Protect Eyes From Welding Hazards

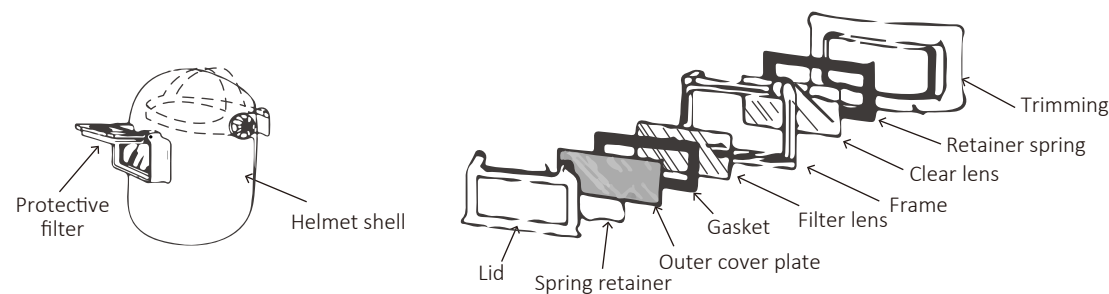
- Protect eyes from welding light by wearing welding helmet fitted with a filter shade which is suitable for the welding process you are doing.
- Always wear safety glasses with side shields or goggles during welding, cutting, gouging if you are not wearing a welding helmet.

How to Choose Eye Protection Products

- Arc welding, air plasma cutting and gouging are required full fact protection by using welding helmet and hand shield.
- The light intensity of gas cutting or brazing is much less than from arc welding, plasma cutting and gouging processes, light shade filter lenses can be used with goggles instead of a welding helmet.

Components of Welding Face Shield and Welding Helmet

- Helmet shell
- Outer cover plate
- Filter lens
- Clear retainer lens
- Gasket
- Harness



Filter Shade Selection

The suitable filter shade is selected according to welding process, wire diameter, welding current during welding.

Process	Electrode or wire diameter(mm)	Operation current(A)	Minimum Shade	Recommended Shade
MMA	<2.5	<60	7	-
	2.5-4	60-160	8	10
	4-6.4	160-250	10	12
	>6.4	250-550	11	14
MIG	0.6-1.6	<60	7	-
TIG	1.6-3.2	60-160	10	11
SUBMERGED ARC	1.6-2.4	160-250	10	12
FLUX-CORED	1.1-1.6	250-550	10	14
Air carbon Cutting	6-10	<500	10	12
	4-10	500-100	11	14

The recommended shade numbers for oxygen cutting:

Process	Metal thickness (mm)	Minimum Shade	Recommended Shade
Light	<25	3	4
Medium	25-150	4	5
Heavy	>150	5	6

FEATURES

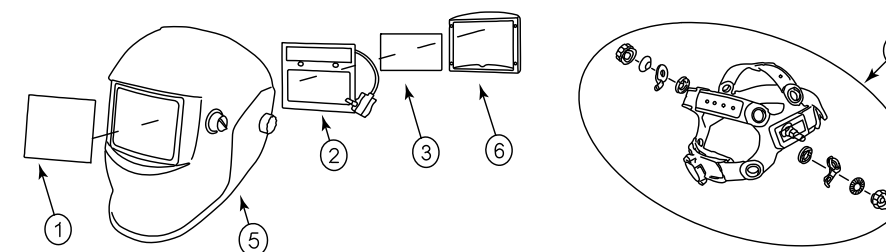
- Adjusted 9-13 by variable shade knob
- Photoelectric sensor technology
- High quality dual LCD and filter
- Ultraviolet ray protection guide of up to DIN16
- Lightweight design and fully adjustable headgear
- Multi-application for MIG, Stick and TIG welding



SPECIFICATIONS

Model	CPH-0010	CPH-0011	CPH-0012
ERP	32.0127.05	32.0127.04	32.0127.03
High optical class	1/2/1/2		
Light state shade	# 4		
Dark state shade	# 9-13		
Switching speed	1/25000S		
Dark to Light	0.1-0.8S		
Way to shift dark state	outer control/stepless control		
Delay adjustment	stepless control		
Sensitivity adjustment	stepless control		
Operating Modes	welding/cutting/grind mode		
Power supply	Lithium battery/solar power		
Operating temperature	-5°C +55°C		
Cartidge size	110*90(mm)/4.3*3.5(in.)		
View size	93*43(mm)/3.6*1.6(in.)		
Sensors	2		
Weight	0.445kg(0.98lb.)		
Size	315*245*245(mm)/12.4*9.64*9.64(in.)		
Warranty	ONE YEARS		

STRUCTURAL GRAPH



1. Front cover lens
2. ADF cartridge
3. Inside cover lens
4. Headgear assembly
5. Helmet shell
6. ADF holder

Welding clothing is one type of personal protective equipment (PPE) used to protect welders from sparks, metal spatters, slag and high heat by using fire resistant and thermally insulation materials. Welding clothing will cover all areas of exposed skin, such as welding jacket, pants, gloves, boots, cap, bibs and so on.

Material of Welding Clothing

Fabric of material should be heavy cotton or wool, rubber or leather, the best material of welding clothing includes as below,

- Denim**
 Denim is a thick, rugged material that will protect welders from working condition that are low in volume and intensity.
- Leather**
 Welding leather clothing is made from premium heavy side split cow leather. It is soft and durable while resisting heat, sparks, slag. All seams are sewn with Kevlar thread.
- Rubber**
 Rubber is not a material typical for welding clothing, such as jackets, caps, pants, but it can be used in welding boots and boots cover.
- Cotton**
 Fire resistance cotton fabric has been chemically treated to withstand heat, it provides economical protection from flame, sparks and molten splash. Cotton clothing are breathable, lightweight comparing to leather. Material remains flame resistant for up to 50 washings.
- Carbon fiber**
 Carbon fibers are renowned for their high-temperature utility when combined with graphite and these clothing articles must undergo processes to make the clothing less stiff.

Type of Welding Clothing

- Welding jackets**
 Jackets cover the arms and torso, extending to the hip, they also cover the arms. Half jackets did not cover the back.
- Welding Bibs**
 Welding bibs are strapped around the neck, bibs cover the lower neck and upper chest, but do not cover anywhere else.
- Welding pants**
 Pants cover the legs and secured by integrated belts. Pants usually accommodate a variety of waistlines, but the length is in standard size.
- Welding sleeves**
 Sleeves cover the arms. It provides protection in low volume welding process.
- Welding boots**
 Boots cover and protect the feet, boots size can be ordered footwear dimensions.
- Welding aprons**
 Welding aprons are not typically sized, but offer standard length with adjustable neck straps. Aprons cover the chest to the knee, but do not cover shoulders or arms.
- Welding caps**
 Welding caps cover the forehead, caps can not replace the welding helmet, but they are useful together with goggles. Caps are rarely made of leather.
- Welding gloves**
 Glovers cover hands, size can be M, L or XL.
- Welding Leggings**
 Leggings cover the shins only, denim is the most common material for leggings, they usually have a fastening mechanism such as a spring-loaded strap or Velcro.

FEATURES

- Flame resistant material
- Pre-shrunk fabric
- An easily front pocket
- 97cm in length
- Adjustable draw string
- Professional and protected for welders



SPECIFICATIONS

Model	ERP	Sizes	Color
Apron-0129	32.0129	97*65 cm	Black

FEATURES

- Flame resistant material
- Made of select split cowhide
- Sewn with KEVLAR stitches.
- An easily front pocket
- 107cm in length
- Adjustable draw string
- Professional and protected for welders



SPECIFICATIONS

Model	ERP	Sizes	Color
Apron-6103	00.4549	107*63 cm	Grey

For MMA Welding

• MMA Welding Glove (Yellow)

- Made of A-Grade Cowhide split leather
- Evenly soft and moderate leather
- Greater protection against sparks and abrasion
- Sewn with Kevlar thread
- Full palm and 100% cotton lining



SPECIFICATIONS

Model	ERP	Sizes	Color
CPG-7149	00.2712	ONE SIZE	Yellow

• MMA Welding Glove (Blue)

- Made of A-Grade Cowhide split leather
- Evenly soft and moderate leather
- Greater protection against sparks and abrasion
- Sewn with Kevlar thread
- Full palm and 100% cotton lining



SPECIFICATIONS

Model	ERP	Sizes	Color
CPG-7142	00.2713	ONE SIZE	Blue

• MMA Welding Glove (Grey)

- Made of A-Grade Cowhide split leather
- Evenly soft and moderate leather
- Greater protection against sparks and abrasion
- Sewn with Kevlar thread
- Full palm and 100% cotton lining



SPECIFICATIONS

Model	ERP	Sizes	Color
CPG-7140	00.2714	ONE SIZE	Grey

• MMA Welding Glove (Golden)

- Made of A-Grade Cowhide split leather
- Evenly soft and moderate leather
- Greater protection against sparks and abrasion
- Sewn with Kevlar thread
- Full palm and 100% cotton lining



SPECIFICATIONS

Model	ERP	Sizes	Color
CPG-1210	00.2702.01	L	Golden
	00.2702.02	XL	

For MMA/MIG Welding

• MMA/MIG Welding Glove (Black)

- Made of A-Grade Cowhide split leather
- Evenly soft and moderate leather
- Greater protection against sparks and abrasion
- Sewn with Kevlar thread
- Full palm and 100% cotton lining



SPECIFICATIONS

Model	ERP	Sizes	Color
CPG-0131	32.0131.01	ONE SIZE	Black

• MMA/MIG Welding Glove (Blue)

- Made of A-Grade Cowhide split leather
- Evenly soft and moderate leather
- Greater protection against sparks and abrasion
- Sewn with Kevlar thread
- Full palm and 100% cotton lining



SPECIFICATIONS

Model	ERP	Sizes	Color
CPG-0132	32.0131.02	ONE SIZE	Blue

• MMA/MIG Welding Glove (Blue)

- Made of A-Grade Cowhide split leather
- Evenly soft and moderate leather
- Greater protection against sparks and abrasion
- Sewn with Kevlar thread
- Full palm and 100% cotton lining



SPECIFICATIONS

Model	ERP	Sizes	Color
CPG-0160	00.2701.01	L	Blue
	00.2701.02	XL	

• MMA/MIG Welding Glove (Blue)

- Made of A-Grade Cowhide split leather
- Evenly soft and moderate leather
- Greater protection against sparks and abrasion
- Sewn with Kevlar thread
- Full palm and 100% cotton lining



SPECIFICATIONS

Model	ERP	Sizes	Color
CPG-1201	00.1364.01	L	Blue
	00.1364.02	XL	

• MMA/MIG Welding Glove (Orange)

- Made of A-Grade Cowhide split leather
- Evenly soft and moderate leather
- Greater protection against sparks and abrasion
- Sewn with Kevlar thread
- Full palm and 100% cotton lining



SPECIFICATIONS

Model	ERP	Sizes	Color
CPG-2102	00.2705.01	L	Orange
	00.2705.02	XL	

• MMA/MIG Welding Glove (Grey)

- Made of A-Grade Cowhide split leather
- Evenly soft and moderate leather
- Greater protection against sparks and abrasion
- Sewn with Kevlar thread
- Full palm and 100% cotton lining



SPECIFICATIONS

Model	ERP	Sizes	Color
CPG-2112	00.2706.01	L	Grey
	00.2706.02	XL	

• MMA/MIG Welding Glove (Grey)

- Made of A-Grade Cowhide split leather
- Evenly soft and moderate leather
- Greater protection against sparks and abrasion
- Sewn with Kevlar thread
- Full palm and 100% cotton lining



SPECIFICATIONS

Model	ERP	Sizes	Color
CPG-2201	00.1366.01	L	Grey
	00.1366.02	XL	

• MMA/MIG Welding Glove (Golden)

- Made of A-Grade Cowhide split leather
- Evenly soft and moderate leather
- Greater protection against sparks and abrasion
- Sewn with Kevlar thread
- Full palm and 100% cotton lining



SPECIFICATIONS

Model	ERP	Sizes	Color
CPG-2202	00.1365.01	L	Golden
	00.1365.02	XL	

General Purpose

• Work Glove (Grey)

- Cowhide split leather palm
- More durable Denim back
- Double stitched seam
- Comfortable cotton lining



SPECIFICATIONS

Model	ERP	Sizes	Color
CPG-2025	00.2715	ONE SIZE	Grey

• Work Glove (Grey)

- Made of Cowhide split leather palm
- Split leather knuckle strip
- 3" rubberized safety cuff
- Shirred elastic wrist for snug fit
- Comfortable cotton lining



SPECIFICATIONS

Model	ERP	Sizes	Color
CPG-1525	00.2704.01	L	Grey
	00.2704.02	XL	

• Work Glove (Grey)

- Made of Cowhide split leather palm
- Split leather knuckle strip
- 3" rubberized safety cuff
- Shirred elastic wrist for snug fit
- Comfortable cotton lining



SPECIFICATIONS

Model	ERP	Sizes	Color
CPG-2203	00.1618.01	L	Grey
	00.1618.02	XL	

• General Purpose Glove (Golden)

- Cowhide split leather palm
- More durable Denim back
- Double stitched seam
- Comfortable cotton lining



SPECIFICATIONS

Model	ERP	Sizes	Color
CPG-1505	00.2703.01	L	Golden
	00.2703.02	XL	

• General Purpose Glove (Golden)

- Cowhide split leather palm
- More durable Denim back
- Double stitched seam
- Comfortable cotton lining



SPECIFICATIONS

Model	ERP	Sizes	Color
CPG-1506	00.1615.01	L	Golden
	00.1615.02	XL	

Welding curtain (Screen) & blankets protect surrounding people and your valuable equipment and property against unnecessary exposure to flame, spatter, heat and molten splash. Increase productivity by creating a cleaner, quieter, and safer workplace.

Welding curtain (Screens) are made with a specially formulated vinyl 0.4 mm thick. These screens are transparent and resistant to UV rays, flame, and abrasion.

Our production line incorporates ultrasonic weld technology. The ultrasonic technology actually fuses the hem and grommet, making them more structurally sound and durable than any other screen on the market.

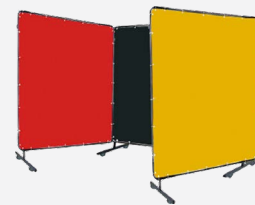
Portable Welding Curtain

The most common welding shield. The portable welding screens fold up and can be moved anywhere.



Welding Booth Curtains

Side to side vinyl curtains for welding booths. Common at schools and colleges.



Welding curtain Walls

Welding curtains that form a wall or a complete 4 sided welding booth



Welding Curtain Rolls

Tinted and opaque welding rolls that zip tile to welding cell fencing or for static hanging.



Strip Welding Curtains

Includes PVC strips & hardware for a complete weld strip system. Available in all configurations, such as hanging welding strips, freestanding welding strips, welding booth strips, Robot strip curtains, exhaust hood strip curtains, welding strip rolls and high heat strip curtains.



Size of Welding Curtain

Usually, the height of curtain is 1.8m, width can be made according to requirement, but the minimum width of curtain is 1.2m.

Welding Curtains

- Flame resistant
- UV resistant
- Waterproof
- Anti-mildew
- Slip resistant
- Scuff resistant
- Chemical resistant
- Color Fade resistant
- Phthalate free
- Airtight etc.
- EN ISO 25980 Approved
- 16mil (0.4mm) specially formulated vinyl

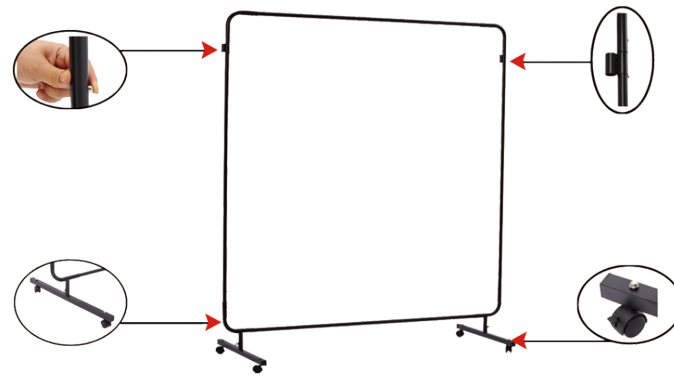


SPECIFICATIONS

Model	ERP	Sizes(W*H)	Color	Unit
CPC-0001	00.3796	1.74*1.74m	Orange	Each
CPC-0002	32.0148.01	2.0*1.8m	Orange	Each
CPC-0003	32.0148.02	2.7*1.8m	Orange	Each
CPC-0013	32.0148.04	3.4*1.8m	Orange	Each
CPC-0004	00.3797	1.74*1.74m	Light Green	Each
CPC-0005	00.2708	1.74*1.74m	Red	Each
CPC-0006	00.2707	1.74*1.74m	Green	Each
CPC-0014	32.3770.07	1.3*1.8m	Green	Each
CPC-0015	32.3770.05	2.0*1.8m	Green	Each
CPC-0016	32.3770.04	2.7*1.8m	Green	Each
CPC-0017	32.3770.03	3.4*1.8m	Green	Each

Welding Curtain Frame

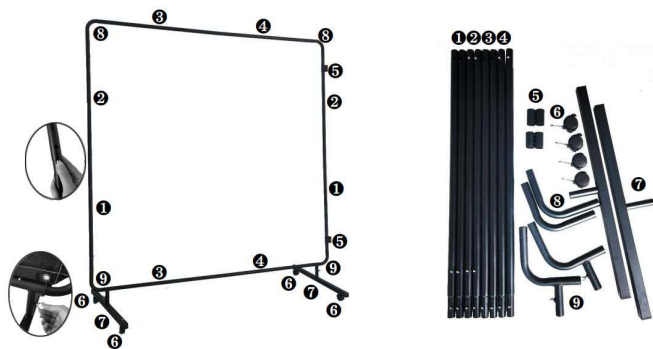
- Suits 1.74*1.74m welding curtain
- Durable black powder-coated round tube framing
- Snap-fit design for quick and easy assembly
- Lockable wheels for easy movement
- Welding curtain sold separately



SPECIFICATIONS

Model	ERP	Sizes(W*H)	Color	Unit
CPC-0007	00.3795	1.8*1.8m	Black	Each

— ASSEMBLY INSTRUCTION



- 1 2. Side Poles *2*2.
- 3 4. Top & Bottom Poles *2*2.
5. Connectors *2.
6. Wheels *4 (2 Lockable).
7. Base Frames *2.
8. Up Corners *2.
9. Bottom Corners with screw *2.

- Step A: Attach one lockable wheel (6) and one plain wheel (6) to each base frame (7).
- Step B: Insert the bottom corners with screw (9) to each base frame (7), tighten the screws.
- Step C: Insert pole (2) to pole (1) to make long side poles, adding connector (5); Insert pole (4) to pole (3) to make long top & bottom poles.
- Step D: Insert long bottom pole, long side poles to bottom corners (9).
- Step E: Insert long top pole to up corners (8), connect to side poles, adjust the bottom corners' screws as preference, this completes the assembly of the frame.
- Step F: Attach matching welding curtain (sold separately).
- We provide red, green, orange, clear colors for choice.

Welding Curtain and Frame Kit

- Flame resistant
- UV resistant
- Waterproof
- Anti-mildew
- Slip resistant
- Scuff resistant
- Chemical resistant
- Color Fade resistant
- Phthalate free
- Airtight etc.
- EN ISO 25980 Approved
- 16mil (0.4mm) specially formulated vinyl
- Snap-fit design for quick and easy assembly without tools



SPECIFICATIONS

Model	ERP	Sizes(W*H)	Color	Unit
CPC-0009	32.0136.01	1.2*1.5m	Red	Kit

Welding Curtain Bag

- Convenient, firm and durable
- Moisture and dustproof
- Comfortable handle design
- Transparent PVC Waterproof material
- Top zipper closure ensures safe and secure



SPECIFICATIONS

Model	ERP	Sizes(W*H)	Color	Unit
CPC-0008	32.0149	38*43cm	Black	Each

What is Welding Blanket

Welding blankets are made of fiberglass fabric, silica fabric or fiberglass fabric with different kinds of coatings. The blankets provide excellent protection from grinding or welding sparks, slag and drops of molten metal, blankets also provide a safe and clean environment for welders. According to different materials, it has different temperature from 200°C to 1300°C, the specifications are customized according to needs.



Work Application

- Thinner and less heat resistant blankets are usually for light duty welding and cutting.

- Durable and higher heat resistant blanks are usually for heavy duty welding or cutting because of the drops of molten metals, etc.



Welding Blanket Materials

• Fiberglass

Fiberglass is common used for MIG/TIG/MMA and plasma cutting processes, its heat resistance can be up to 1000°C.



Uncoated fiberglass



Acrylic coated fiberglass



Vermiculite coated fiberglass

• Silica Cloth

The silica is more than 96%, it is material with high resistance, it can be durable at 1000°C for long time.



• Carbon Fiber

Carbon Fiber has high heat resistance up to 1800°C, it is soft, flexible and durable.



Welding blanket sizes, thickness and weight

- 1mx1m, 1mx2m, 2mx2m, other sizes can be made according to needs.
- Thickness can be 0.3mm to 3mm
- The weight can be from 100g to 860g

Fiberglass



CPB-1850



CPB-3001



CPB-906

SPECIFICATIONS

Model	Material	Max Temperature	Weight(g/m ²)	Color	Size
CPB-1850	Uncoated fibreglass	550°C	620g	Tan	1*2m
					2*2m
CPB-3001	Acrylic coated fibreglass	550°C	460g	Grey	1*2m
					2*2m
CPB-906	Vermiculite coated fibreglass	750°C	750g	Black	1*2m
					2*2m

Silica Cloth



SPECIFICATIONS

Model	Material	Max Temperature	Weight(g/m ²)	Color	Size
CPB-2-1900	Uncoated silica	1300°C	600g	Bronze	1*2m
					2*2m

Carbon Fiber



SPECIFICATIONS

Model	Material	Max Temperature	Weight(g/m ²)	Color	Size
CPB-5180	Carbon fibre	1300°C	425g	Black	1*2m
					2*2m

Processes

Stick

Capacity

5 kg

Chamber Size

Φ78*450mm

Insulation

0.5cm Stainless steel liner

Temperature Range

50-400 °C: Minimum ambient operation temperature is 50 °C to maintain an electrode oven chamber temperature of 400 °C

Heating element

320 Watt

Portable Electrode Ovens

- Compact design-Easy to carry
- Rod lifter-Easy to load
- Preset 50 °C -320 °C
- Power on indicator light
- Substantial insulation layer
- Light weight, rugged and portable



Operates from 220 Volts AC power source or 115 Volts AC power source. Equips with rod lifter and indicator light. Thermostatically controlled oven temperature ranges from 50-400 °C. Provides absolute electrode stability when used with temperature-controlled ovens.

SPECIFICATIONS

Model	ERP	Storage Capacity	Input Voltage	Temperature	Heater Capacity	Electrode Length	Pressure resistance(V)	leakage current(A)	Insulation resistance value(Ω)	Dimensions	Net Weight
CPD-5-1	00.2730.01	5Kg	1PH 110V, 50/60Hz	50-400°C	320W	450mm	500	≥500V 0.2mA	≥100MΩ	Φ190*548mm	3.1 kg
CPD-5-2	00.2730.02	5Kg	1PH 220V, 50/60Hz	50-400°C	320W	450mm	500	≥500V 0.2mA	≥100MΩ	Φ190*548mm	3.1 kg

Electrode Dryers

- Compact and energy saving design
- Thermostat allows to adjust the required temperature
- Built-in thermomater displays the temperature and indicator to indicate operation status
- High-grade heat insulating materials allows to maintain a high constant temperature during the working time
- Stainless steel material makes a longer working life



Crepow Electrode Dryers and Ovens are designed for a variety pf usages. They can be used in small and medium size workshops to dry or store electrodes. They can also accommodate electrodes up to 450mm length. They can slao be used in high volume electrode baking at a maximum temperature of up to 400 degrees. The electrodes are kept dry at all time when kept in the dryers or ovens, this preventsimpurities exiting from the weld bead.

SPECIFICATIONS

Model	CPD-50	CPD-100
ERP	00.2725	00.2729
Storage Capacity	50Kg	100Kg
Input Voltage	1PH AC220V, 50/60Hz	3PH AC380V, 50/60Hz
Temperature	50-400°C	50-400°C
Heater Capacity	2400W	2400W
Electrode Length	450mm	450mm
Pressure resistance(V)	500	500
leakage current(A)	≥500V 0.2mA	≥500V 0.2mA
Insulation resistance value(Ω)	≥100MΩ	≥100MΩ
Temperature Control	Adjustable thermostat	Adjustable thermostat
Dimensions	435*635*720mm	525*800*720mm
Net Weight	63Kg	85Kg



CREPOW
Welding & Cutting Technology

WELDING FORCE

MMA TIG MIG Plasma Gun & Torch Accessories Consumable Protection Future

MIG > PFC range Autopower range Multimig range Onlymig range Double Pulse range Heavy Industry Range Transformer Range

MIG 180 PFC MULTIMIG 200 PFC MULTIMIG 200 PFC SYN

www.crepow.com

Ready To Serve You



✉ sales@crepow.com

🌐 www.crepow.com